

Comments and Corrections

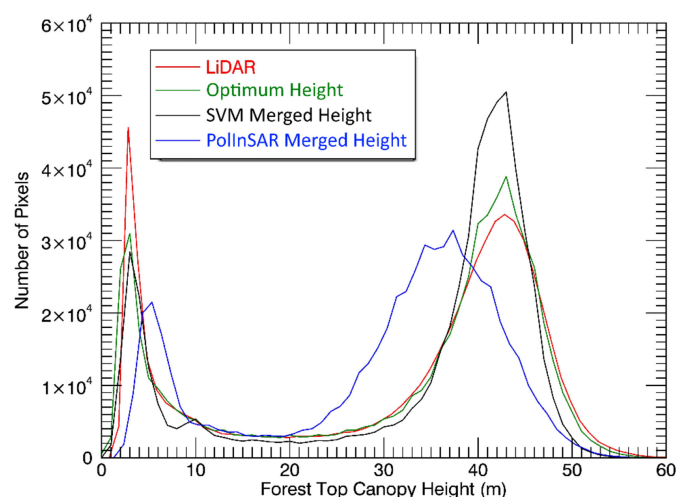
Corrections to “A Machine-Learning Approach to PolInSAR and LiDAR Data Fusion for Improved Tropical Forest Canopy Height Estimation Using NASA AfriSAR Campaign Data”

Maryam Pourshamsi, Mariano Garcia, Marco Lavalley, and Heiko Balzter

In the above article [1], the names of black and blue curves are given the other way around in the legend in Fig. 9. The blue curve should be PolInSAR Merged Height and the black one should be SVM Merged Height. The authors believe this happened following a typo in the coding. Below is the corrected figure:

REFERENCE

- [1] M. Pourshamsi, M. Garcia, M. Lavalley, and H. Balzter, “A machine-learning approach to PolInSAR and LiDAR data fusion for improved tropical forest canopy height estimation using NASA AfriSAR campaign data,” *IEEE J. Sel. Topics Appl. Earth Observ. Remote Sens.*, vol. 11, no. 10, pp. 3453–3463, Oct. 2019.



Manuscript received January 20, 2020; accepted January 20, 2020. Date of current version February 14, 2020.

M. Pourshamsi is with the School of Geography, Geology and the Environment, Centre for Landscape and Climate Research, University of Leicester, LE1 7RH Leicester, U.K. (e-mail: mp389@le.ac.uk).

M. Garcia is with the Department of Geology, Geography and Environment, University of Alcalá, Madrid 28801, Spain (e-mail: mariano.garcia@uah.es).

M. Lavalley is with the Radar Science and Engineering Group, Jet Propulsion Laboratory, California Institute of Technology, Pasadena, CA 91125 USA (e-mail: marco.lavalley@jpl.nasa.gov).

H. Balzter is with the School of Geography, Geology and the Environment, Centre for Landscape and Climate Research and National Centre for Earth Observation, University of Leicester, LE1 7RH Leicester, U.K. (e-mail: hb91@le.ac.uk).

Digital Object Identifier 10.1109/JSTARS.2020.2968779