

# Supplementary Information, Figures and Tables

Borrell et al. Enset in Ethiopia: a poorly characterised but resilient starch staple  
Submitted to Annals of Botany: 24 August 2018; accepted 31 October 2018  
doi allocated: doi.org/10.1093/aob/mcy214

**Methods** used to prepare Figures 2,3 and 7 and Supplementary Figures S1 and S2.

**Figure S1.** Estimated population size of the major enset growing regions. included in the phylogenetic analysis (Figures 2 and Supplementary Figure, S2).

**Figure S2.** Phylogenetic relationships of *Ensete* spp. species within the Zingerberales.

**Table S1.** Species and associated GenBank accession numbers for ITS sequences

**Table S2.** Landrace names for domesticated varieties of *Ensete ventricosum*, identified in the review of available literature.

## METHODS

### Estimated population size of the major enset growing regions (Figure S1)

To generate a coarse estimate of the population partly or wholly reliant on enset as a starch staple, we used United Nation's World Population Prospects (UN WPP) - Adjusted Population Count, v4.10 for the years 2000, 2005, 2010, 2015 and 2020 (Columbia 2017). These data estimate number of persons per pixel, adjusted to match UN WPP country totals, at a 30 arc-second (~1 km resolution), based on national census data. We used expert opinion and extensive fieldwork trips, as well as maps published in Brandt *et al.*, (1997) to define the major enset growing regions as geographic polygons (Figure S1, A). The population within each polygon – that is the number of people living within major enset growing zones – was then calculated for each time period (Figure S1, B). We used linear regression to obtain a population estimate for the year 2018, which reported 20,061,961 persons in the major enset growing zones. This is the value reported in the main text.

### Evolutionary relationships of genus *Ensete* (Figures 2 and S2)

A total of 83 ITS sequences encompassing available *Ensete* species and related sister genera and outgroups within the Zingerberales were harvested from the NCBI (Table S2), and subsequently aligned using ClustalW implemented in MEGA 6.0 software (Tamura *et al.* 2013). A phylogenetic tree was constructed using the UPGMA model (Sneath and Sokal

1973) with 1000 replicate bootstrap analysis. Tree topography was inferred using the UPGMA method, resulting in an optimal tree with the sum of branch length of 7.45. The percentage of replicate trees in which the associated taxa clustered together in the bootstrap test are shown above the branches. Evolutionary distances were computed using the Maximum Composite Likelihood method and are in the units of the number of base substitutions per site. The rate variation among sites was modelled with a gamma distribution. All ambiguous positions were removed for each sequence pair, with a total of 1057 positions in the final dataset. \* denotes *species* has whole genome sequences available.

### Fluorescent *in situ* hybridization (Figure 3)

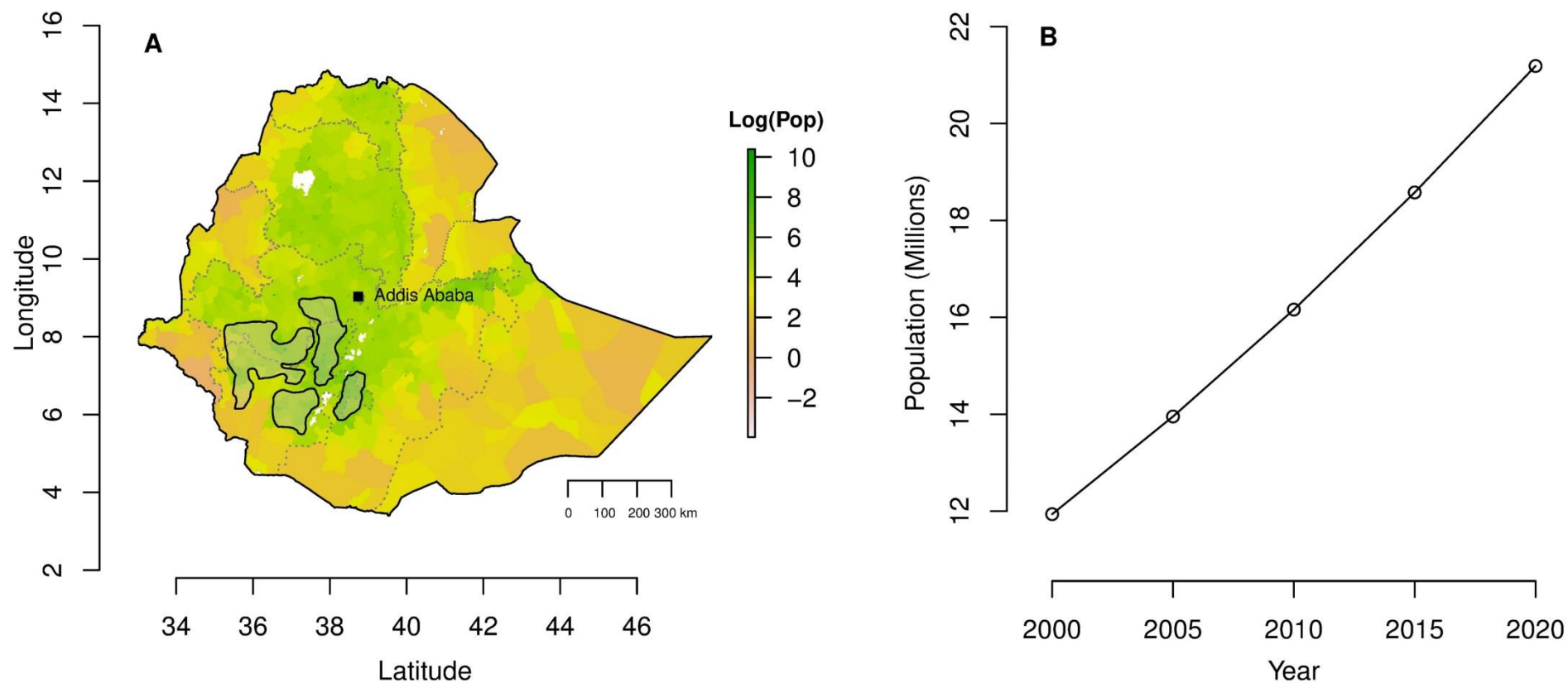
Following the method of Schwarzacher and Heslop-Harrison (2000), freshly grown root tips were treated with 0.02M hydroxyquinolin for two hours at room temperature, followed by 20 hours at 4°C and fixed in 96% ethanol:glacial acetic acid (3:1) for at least 48 hours. Metaphase chromosomes were prepared in 45% acetic acid on microscope slides after proteolytic enzyme digestion (Schwarzacher and Heslop-Harrison 2000). The 5S probe was generated by random priming with biotin 16-dUTP (Roche Diagnostics) from the insert of clone pTa794 (Gerlach and Dyer 1980) and the AAC repeat was a directly labelled FITC oligonucleotide. Condition of hybridization and washes were as described in Schwarzacher and Heslop-Harrison (2000) using a stringency of 75-80% for sequence homology to form probe chromosomal DNA hybrids. Detection of biotin dUTP used streptavidin conjugated to Alexa 495. Slides were counterstained with 4', 6-diamidino-2-phenylindole (DAPI; 3 mg/ml) antifade solution (AF1, Citifluor, London, UK) and analysed using a Nikon Eclipse 80i epifluorescent microscope (Tokyo, Japan) fitted with UV, blue and green excitation filters. Individual channels were captured by a DS-QiMc monochromatic camera, overlaid and brightness adjusted using NIS-Elements v.2.34 (Tokyo, Japan)

## Phonetic classification of enset landraces (Figure 7)

Enset landrace names were collated from 28 publications (time period 1990-2017), retaining the original spelling. This raw data, including name duplications (the same landrace, recorded in two publications) was used in an initial assessment of commonality between studies (Figure 7, red bars). In an attempt to account, in a limited way, for spelling and structure variation we also clustered vernacular names using the soundex string matching function in the package stringdist (van der Loo 2014), R software (R Core Team 2017).

## References

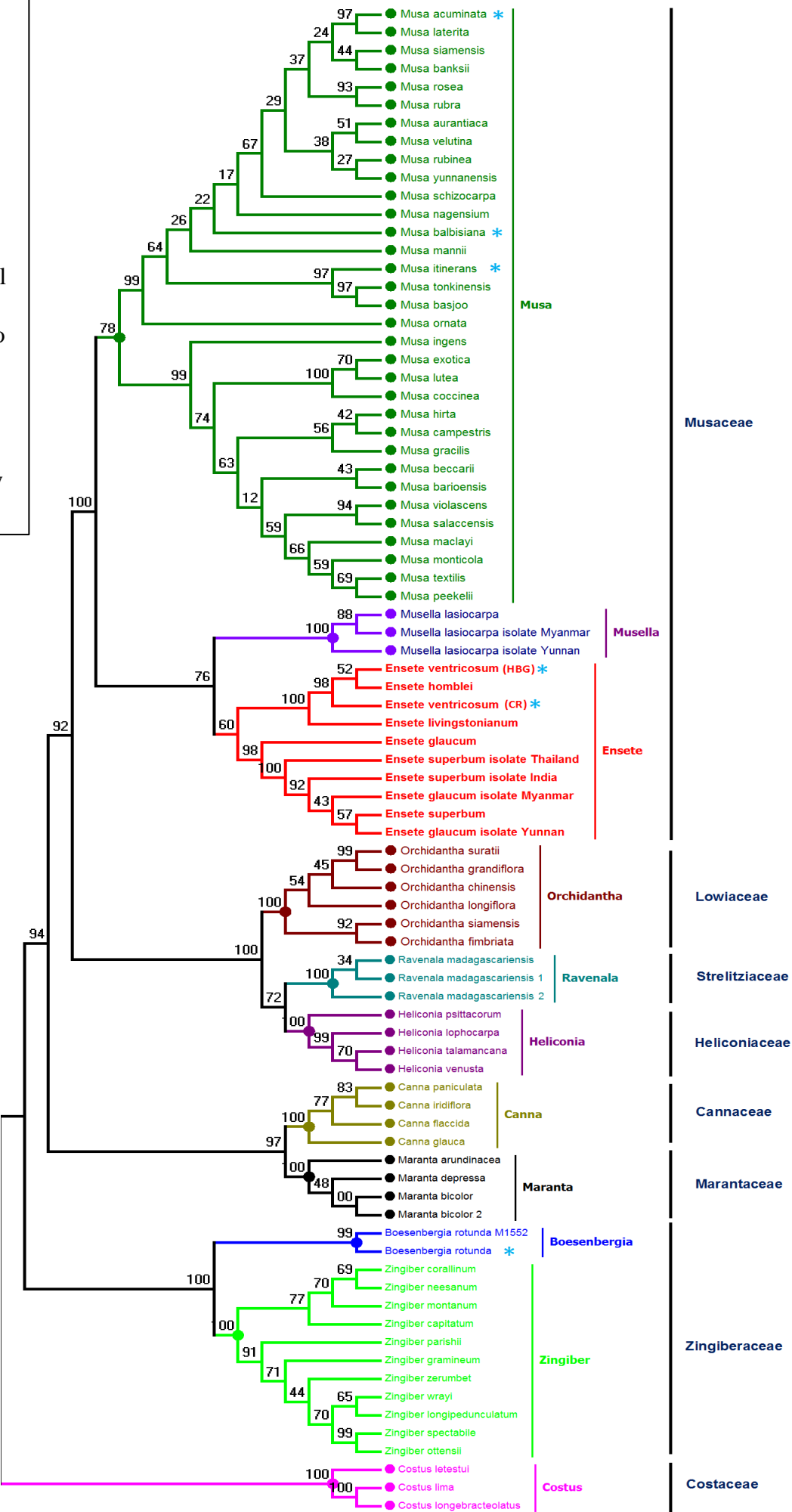
- Brandt S A., Spring A, Hiebsch C, et al. 1997.** The “Tree Against Hunger”: Enset-based Agricultural System in Ethiopia. *Advancement Of Science*: 56.
- Columbia C for IESIN-C-. 2017.** *Gridded Population of the World, Version 4 (GPWv4): Population Count Adjusted to Match 2015 Revision of UN WPP Country Totals, Revision 10*. Palisades, NY: NASA Socioeconomic Data and Applications Center (SEDAC).
- Gerlach WL, Dyer TA. 1980.** Sequence organization of the repeating units in the nucleus of wheat which contain 5S rRNA genes. *Nucleic Acids Research* **8**: 4851–4865.
- M. van der L. 2014.** The stringdist package for approximate string matching. *The R Journal* **6**: 111–122.
- R Core Team. 2017.** R: A language and environment for statistical computing.
- Schwarzacher T, Heslop-Harrison P. 2000.** *Practical in situ Hybridization*. Oxford: BIOS Scientific Publishers.
- Sneath PHA, Sokal RR. 1973.** *Numerical Taxonomy*. Freeman, San Francisco.
- Tamura K, Stecher G, Peterson D, Filipski A, Kumar S. 2013.** MEGA6: Molecular evolutionary genetics analysis version 6.0. *Molecular Biology and Evolution* **30**: 2725–2729.



**Figure S1.** Estimated population size of the major enset growing regions. A) UN WPP - Adjusted Population Count estimates mapped for Ethiopia. Shaded polygons denote major enset growing regions (see Fig 3, main text). B) Estimated population growth from the year 2000 – 2020 for the major enset growing regions. For methods used see Supplementary information.

Figure S2.

Phylogenetic relationships of Ensete spp. species within the Zingerberales. Phylogenetic tree constructed based on ITS sequences (Table S2). The tree is identical to Figure 2 in the main text, except expanded to show all individual species, rather than grouped by genus or family. For methods used see Supplementary Information.



**Table S1.** Species and associated GenBank accession numbers for ITS sequences included in phyloge

<b>Species</b>	<b>GenBank accession number</b>
<i>Boesenbergia rotunda</i>	AJ388281.1
<i>Boesenbergia rotunda</i> M1552	KY701331.1
<i>Canna flaccida</i>	FJ939498.1
<i>Canna glauca</i>	FJ939559.1
<i>Canna iridiflora</i>	FJ939489.1
<i>Canna paniculata</i>	FJ939543.1
<i>Costus letestui</i>	KJ011186.1
<i>Costus lima</i>	AY972990.1
<i>Costus longebracteolatus</i>	AY972951.1
<i>Ensete glaucum</i>	FJ428103.1
<i>Ensete glaucum</i> isolate Myanmar	FJ626398.1
<i>Ensete glaucum</i> isolate Yunnan 2	FJ626400.1
<i>Ensete homblei</i>	FJ626394.1
<i>Ensete livingstonianum</i>	FJ626393.1
<i>Ensete superbum</i>	KT257627.1
<i>Ensete superbum</i> isolate India	FJ626396.1
<i>Ensete superbum</i> isolate Thailand	FJ626397.1
<i>Ensete ventricosum</i>	FJ428078.1
<i>Ensete ventricosum</i> 2	FJ626392.1
<i>Heliconia psittacorum</i>	FJ428105.1
<i>Heliconia lophocarpa</i>	KY215042.1
<i>Heliconia talamancana</i>	KY215115.1
<i>Heliconia venusta</i>	KY215125.1
<i>Maranta arundinacea</i>	JQ341260.1
<i>Maranta bicolor</i>	AY673056.1
<i>Maranta bicolor</i> 2	KU215061.1
<i>Maranta depressa</i>	KU215060.1
<i>Musa acuminata</i>	EU418630.1
<i>Musa aurantiaca</i>	FJ428090.1
<i>Musa balbisiana</i>	FJ428102.1
<i>Musa banksii</i>	FJ428097.1
<i>Musa barioensis</i>	FJ428067.1
<i>Musa basjoo</i>	FJ428100.1
<i>Musa beccarii</i>	FJ428065.1
<i>Musa campestris</i>	FJ428076.1
<i>Musa coccinea</i>	FJ428062.1
<i>Musa exotica</i>	FJ428063.1
<i>Musa gracilis</i>	FJ428075.1
<i>Musa hirta</i>	FJ428074.1
<i>Musa ingens</i>	FJ428077.1
<i>Musa itinerans</i>	FJ428098.1
<i>Musa laterita</i>	MF496106.1
<i>Musa lutea</i>	FJ428064.1
<i>Musa maclayi</i>	FJ428068.1
<i>Musa mannii</i>	FJ428091.1
<i>Musa monticola</i>	FJ428073.1

<i>Musa nagensium</i>	FJ428101.1
<i>Musa ornata</i>	FJ428096.1
<i>Musa peekelii</i>	FJ428070.1
<i>Musa rosea</i>	FJ428080.1
<i>Musa rubinea</i>	FJ428093.1
<i>Musa rubra</i>	FJ428081.1
<i>Musa salaccensis</i>	FJ428072.1
<i>Musa schizocarpa</i>	FJ428088.1
<i>Musa siamensis</i>	FJ428086.1
<i>Musa textilis</i>	FJ428069.1
<i>Musa tonkinensis</i>	FJ428099.1
<i>Musa velutina</i>	FJ428092.1
<i>Musa violascens</i>	FJ428071.1
<i>Musa yunnanensis</i>	FJ428095.1
<i>Musella lasiocarpa</i>	FJ428079.1
<i>Musella lasiocarpa</i> isolate Myanmar	FJ626391.1
<i>Musella lasiocarpa</i> isolate Yunnan	FJ626390.1
<i>Orchidantha chinensis</i>	FJ428104.1
<i>Orchidantha fimbriata</i>	AF434879.1
<i>Orchidantha grandiflora</i>	AF434880.1
<i>Orchidantha longiflora</i>	AF434883.1
<i>Orchidantha siamensis</i>	AF434887.1
<i>Orchidantha suratii</i>	AF434888.1
<i>Ravenala madagascariensis</i>	FJ428107.3
<i>Ravenala madagascariensis</i> 1	FJ626401.1
<i>Ravenala madagascariensis</i> 2	FJ428107.3
<i>Zingiber capitatum</i>	KM983538.1
<i>Zingiber corallinum</i>	AF202418.1
<i>Zingiber gramineum</i>	AF478800.1
<i>Zingiber longipedunculatum</i>	AB097254.1
<i>Zingiber montanum</i>	DQ064585.1
<i>Zingiber neesenum</i>	KJ872228.1
<i>Zingiber ottensii</i>	DQ064582.1
<i>Zingiber parishii</i>	KF304570.1
<i>Zingiber spectabile</i>	AF414499.1
<i>Zingiber wrayi</i>	AF478802.1
<i>Zingiber zerumbet</i>	KJ872294.1

---

**Table S2.** Landrace names for domesticated varieties of *Ensete ventricosum* , identified in review of available literature

Species	Landrace name	Provenance	Reference
<i>Ensete ventricosum</i>	Aasha	Domesticated	Shigeta 1990
<i>Ensete ventricosum</i>	Abata Merza	Domesticated	Welde-Michael <i>et al.</i> 2008
<i>Ensete ventricosum</i>	Abate	Domesticated	Addis 2005
<i>Ensete ventricosum</i>	Abate	Domesticated	Welde-Michael <i>et al.</i> 2008
<i>Ensete ventricosum</i>	Abatemerza	Domesticated	McKnight report 2014
<i>Ensete ventricosum</i>	Abatmerza	Domesticated	Nurebo 2017
<i>Ensete ventricosum</i>	Abat-Merza	Domesticated	Tabogie 1997
<i>Ensete ventricosum</i>	Abato	Domesticated	Tabogie 1997
<i>Ensete ventricosum</i>	Acbaka	Domesticated	Tsegaye 2002
<i>Ensete ventricosum</i>	Achacho	Domesticated	Abadura 2017
<i>Ensete ventricosum</i>	Achaka	Domesticated	Olango 2014
<i>Ensete ventricosum</i>	Achaka	Domesticated	Zengele 2017
<i>Ensete ventricosum</i>	Achalka	Domesticated	Addis 2005
<i>Ensete ventricosum</i>	Achana	Domesticated	Welde-Michael <i>et al.</i> 2008
<i>Ensete ventricosum</i>	Achecho	Domesticated	Addis 2005
<i>Ensete ventricosum</i>	Acho	Domesticated	Abadura 2017
<i>Ensete ventricosum</i>	Adame-Ado	Domesticated	Yemataw <i>et al.</i> 2012
<i>Ensete ventricosum</i>	Adami	Domesticated	Assefa and Fitamo 2016
<i>Ensete ventricosum</i>	Adami	Domesticated	Tsegaye 2002
<i>Ensete ventricosum</i>	Adami-Ado	Domesticated	Assefa and Fitamo 2016
<i>Ensete ventricosum</i>	Adamu	Domesticated	Tesfaye and Ludders 2002
<i>Ensete ventricosum</i>	Adara	Domesticated	Yasuaki 2009
<i>Ensete ventricosum</i>	Addisababa	Domesticated	Zippel 2005
<i>Ensete ventricosum</i>	Addo	Domesticated	Abadura 2017
<i>Ensete ventricosum</i>	Addo	Domesticated	McKnight report 2014
<i>Ensete ventricosum</i>	Addo	Domesticated	Tsegaye 2002
<i>Ensete ventricosum</i>	Adema	Domesticated	Addis 2005
<i>Ensete ventricosum</i>	Adinona	Domesticated	Bogale <i>et al.</i> 2004
<i>Ensete ventricosum</i>	Adinona	Domesticated	Olango 2014
<i>Ensete ventricosum</i>	Adinona	Domesticated	Olango 2015
<i>Ensete ventricosum</i>	Adinona	Domesticated	Shumbulo 2012
<i>Ensete ventricosum</i>	Adinona	Domesticated	Tabogie 1997
<i>Ensete ventricosum</i>	Adinona	Domesticated	Zengele 2017
<i>Ensete ventricosum</i>	Adinono	Domesticated	Addis 2005
<i>Ensete ventricosum</i>	Adnona	Domesticated	Tsegaye 2002
<i>Ensete ventricosum</i>	Adnona	Domesticated	Zengele 2017
<i>Ensete ventricosum</i>	Ado	Domesticated	Garedew 2017
<i>Ensete ventricosum</i>	Ado	Domesticated	Addis 2005
<i>Ensete ventricosum</i>	Ado	Domesticated	Alemu and sandford 1991
<i>Ensete ventricosum</i>	Ado	Domesticated	Assefa and Fitamo 2016
<i>Ensete ventricosum</i>	Ado	Domesticated	Bogale <i>et al.</i> 2004
<i>Ensete ventricosum</i>	Ado	Domesticated	McKnight report 2014
<i>Ensete ventricosum</i>	Ado	Domesticated	Tesfaye and Ludders 2002
<i>Ensete ventricosum</i>	Ado	Domesticated	Welde-Michael <i>et al.</i> 2008
<i>Ensete ventricosum</i>	Ado	Domesticated	Yasuaki 2009
<i>Ensete ventricosum</i>	Ado'O	Domesticated	Nurebo 2017



<i>Ensete ventricosum</i>	Adununa	Domesticated	Alemu and sandford 1991
<i>Ensete ventricosum</i>	Aduwa	Domesticated	Olango 2014
<i>Ensete ventricosum</i>	Aduwa	Domesticated	Zengele 2017
<i>Ensete ventricosum</i>	Aegina	Domesticated	Bekele <i>et al</i> 1998
<i>Ensete ventricosum</i>	Afamma	Domesticated	Olango 2014
<i>Ensete ventricosum</i>	Afamma	Domesticated	Tsegaye 2002
<i>Ensete ventricosum</i>	Afamma	Domesticated	Zengele 2017
<i>Ensete ventricosum</i>	Agade	Domesticated	Addis 2005
<i>Ensete ventricosum</i>	Agade	Domesticated	Bogale <i>et al</i> 2004
<i>Ensete ventricosum</i>	Agade	Domesticated	McKnight report 2014
<i>Ensete ventricosum</i>	Agade	Domesticated	Mulualem 2014
<i>Ensete ventricosum</i>	Agade	Domesticated	Nurebo 2017
<i>Ensete ventricosum</i>	Agade	Domesticated	Tesfaye and Ludders 2002
<i>Ensete ventricosum</i>	Agade	Domesticated	Tsegaye 2002
<i>Ensete ventricosum</i>	Agade	Domesticated	Yemataw 2016
<i>Ensete ventricosum</i>	Agadye	Domesticated	Mojo 2017
<i>Ensete ventricosum</i>	Agaguar	Domesticated	Addis 2005
<i>Ensete ventricosum</i>	Agana	Domesticated	Tesfaye and Ludders 2002
<i>Ensete ventricosum</i>	Agana	Domesticated	Yasuaki 2009
<i>Ensete ventricosum</i>	Agane	Domesticated	Abadura 2017
<i>Ensete ventricosum</i>	Agemi	Domesticated	Shigeta 1990
<i>Ensete ventricosum</i>	Agena	Domesticated	Addis 2005
<i>Ensete ventricosum</i>	Agena	Domesticated	Tsegaye 2002
<i>Ensete ventricosum</i>	Agenna	Domesticated	Assefa and Fitamo 2016
<i>Ensete ventricosum</i>	Ager Amer	Domesticated	McKnight report 2014
<i>Ensete ventricosum</i>	Agiiinia	Domesticated	Zippel 2005
<i>Ensete ventricosum</i>	Agina	Domesticated	Olango 2015
<i>Ensete ventricosum</i>	Agina	Domesticated	Tabogie 1997
<i>Ensete ventricosum</i>	Aginia	Domesticated	Alemu and sandford 1991
<i>Ensete ventricosum</i>	Aginia	Domesticated	Tsegaye 2002
<i>Ensete ventricosum</i>	Aginia	Domesticated	Zengele 2017
<i>Ensete ventricosum</i>	Agino	Domesticated	Olango 2014
<i>Ensete ventricosum</i>	Agino	Domesticated	Zengele 2017
<i>Ensete ventricosum</i>	Agunited	Domesticated	McKnight report 2014
<i>Ensete ventricosum</i>	Agunsa	Domesticated	Gizachew 2000
<i>Ensete ventricosum</i>	Agunta	Domesticated	McKnight report 2014
<i>Ensete ventricosum</i>	Ahero	Domesticated	McKnight report 2014
<i>Ensete ventricosum</i>	Ahiro	Domesticated	Addis 2005
<i>Ensete ventricosum</i>	Ahiro	Domesticated	McKnight report 2014
<i>Ensete ventricosum</i>	Ainia	Domesticated	Alemu and sandford 1991
<i>Ensete ventricosum</i>	Ajjaro	Domesticated	Abadura 2017
<i>Ensete ventricosum</i>	Akacha	Domesticated	Gizachew 2000
<i>Ensete ventricosum</i>	Akacha	Domesticated	Olango 2015
<i>Ensete ventricosum</i>	Akacha	Domesticated	Tabogie 1997
<i>Ensete ventricosum</i>	Akalsongie	Domesticated	Alemu and sandford 1991
<i>Ensete ventricosum</i>	Akano	Domesticated	Abadura 2017
<i>Ensete ventricosum</i>	Akaro	Domesticated	Addis 2005
<i>Ensete ventricosum</i>	Akatsunkie	Domesticated	Alemu and sandford 1991
<i>Ensete ventricosum</i>	Alagena	Domesticated	Alemu and sandford 1991
<i>Ensete ventricosum</i>	Alagena	Domesticated	Tsegaye 2002

<i>Ensete ventricosum</i>	Alagena	Domesticated	Zengele 2017
<i>Ensete ventricosum</i>	Ala-Genna	Domesticated	Olango 2014
<i>Ensete ventricosum</i>	Ala-Genna	Domesticated	Zengele 2017
<i>Ensete ventricosum</i>	Alaka	Domesticated	Shigeta 1990
<i>Ensete ventricosum</i>	Alaticho	Domesticated	Addis 2005
<i>Ensete ventricosum</i>	Alaticho	Domesticated	Tesfaye and Ludders 2002
<i>Ensete ventricosum</i>	Alaticho	Domesticated	Tsegaye 2002
<i>Ensete ventricosum</i>	Alaticho	Domesticated	Yasuaki 2009
<i>Ensete ventricosum</i>	Alati-Ganticha	Domesticated	Tesfaye and Ludders 2002
<i>Ensete ventricosum</i>	Aleticho	Domesticated	Assefa and Fitamo 2016
<i>Ensete ventricosum</i>	Alewa	Domesticated	Gizachew 2000
<i>Ensete ventricosum</i>	Algena	Domesticated	Addis 2005
<i>Ensete ventricosum</i>	Alkefita	Domesticated	Alemu and sandford 1991
<i>Ensete ventricosum</i>	Altecho	Domesticated	McKnight report 2014
<i>Ensete ventricosum</i>	Amarat	Domesticated	Bogale <i>et al</i> 2004
<i>Ensete ventricosum</i>	Amarate	Domesticated	Addis 2005
<i>Ensete ventricosum</i>	Amarate	Domesticated	Gizachew 2000
<i>Ensete ventricosum</i>	Amaratye	Domesticated	McKnight report 2014
<i>Ensete ventricosum</i>	Amartiyan	Domesticated	Addis 2005
<i>Ensete ventricosum</i>	Amboma	Domesticated	Assefa and Fitamo 2016
<i>Ensete ventricosum</i>	Amboma	Domesticated	Tesfaye and Ludders 2002
<i>Ensete ventricosum</i>	Ambula	Domesticated	Tsegaye 2002
<i>Ensete ventricosum</i>	Amcheroda	Domesticated	Tsegaye 2002
<i>Ensete ventricosum</i>	Ame (Amaye)	Domesticated	Olango 2015
<i>Ensete ventricosum</i>	Ameratiyen	Domesticated	Bogale <i>et al</i> 2004
<i>Ensete ventricosum</i>	Ametako	Domesticated	Garedew 2017
<i>Ensete ventricosum</i>	Amiya	Domesticated	Bogale <i>et al</i> 2004
<i>Ensete ventricosum</i>	Amiya	Domesticated	McKnight report 2014
<i>Ensete ventricosum</i>	Amole	Domesticated	Yasuaki 2009
<i>Ensete ventricosum</i>	Amonda	Domesticated	Nurebo 2017
<i>Ensete ventricosum</i>	Amorate	Domesticated	Mojo 2017
<i>Ensete ventricosum</i>	Anchere	Domesticated	Tsegaye 2002
<i>Ensete ventricosum</i>	Anchiro	Domesticated	Bogale <i>et al</i> 2004
<i>Ensete ventricosum</i>	Andawute	Domesticated	Addis 2005
<i>Ensete ventricosum</i>	Anikefiye	Domesticated	Yemataw <i>et al.</i> 2012
<i>Ensete ventricosum</i>	Anikefye	Domesticated	Welde-Michael et al. 2008
<i>Ensete ventricosum</i>	Ankafo	Domesticated	Addis 2005
<i>Ensete ventricosum</i>	Ankefuye	Domesticated	McKnight report 2014
<i>Ensete ventricosum</i>	Ankie-Gena	Domesticated	Olango 2015
<i>Ensete ventricosum</i>	Anko	Domesticated	Addis 2005
<i>Ensete ventricosum</i>	Anko (Kowa)	Domesticated	Alemu and sandford 1991
<i>Ensete ventricosum</i>	Anko Mezya	Domesticated	Gizachew 2000
<i>Ensete ventricosum</i>	Ankofiya	Domesticated	Addis 2005
<i>Ensete ventricosum</i>	Ankogena	Domesticated	Addis 2005
<i>Ensete ventricosum</i>	Ankogena	Domesticated	Alemu and sandford 1991
<i>Ensete ventricosum</i>	Ankogena	Domesticated	Bekele <i>et al</i> 1998
<i>Ensete ventricosum</i>	Ankogena	Domesticated	Tsegaye 2002
<i>Ensete ventricosum</i>	Ankogena	Domesticated	Zengele 2017
<i>Ensete ventricosum</i>	Anko-Gena	Domesticated	Tabogie 1997
<i>Ensete ventricosum</i>	Anko-Genna	Domesticated	Olango 2014

<i>Ensete ventricosum</i>	Anko-Genna	Domesticated	Zengele 2017
<i>Ensete ventricosum</i>	Ankuwa	Domesticated	Olango 2014
<i>Ensete ventricosum</i>	Ankuwa	Domesticated	Tabogie 1997
<i>Ensete ventricosum</i>	Ankuwa	Domesticated	Zengele 2017
<i>Ensete ventricosum</i>	Aph	Domesticated	Bogale <i>et al</i> 2004
<i>Ensete ventricosum</i>	Aptra	Domesticated	Alemu and sandford 1991
<i>Ensete ventricosum</i>	Arbagoncho-	Domesticated	Tesfaye and Ludders 2002
<i>Ensete ventricosum</i>	Areko	Domesticated	Garedew 2017
<i>Ensete ventricosum</i>	Areko	Domesticated	Abadura 2017
<i>Ensete ventricosum</i>	Argama	Domesticated	Addis 2005
<i>Ensete ventricosum</i>	Argama	Domesticated	Bogale <i>et al</i> 2004
<i>Ensete ventricosum</i>	Argama	Domesticated	McKnight report 2014
<i>Ensete ventricosum</i>	Argama	Domesticated	Olango 2014
<i>Ensete ventricosum</i>	Argama	Domesticated	Olango 2015
<i>Ensete ventricosum</i>	Argama	Domesticated	Shumbulo 2012
<i>Ensete ventricosum</i>	Argama	Domesticated	Tsegaye 2002
<i>Ensete ventricosum</i>	Argama	Domesticated	Zengele 2017
<i>Ensete ventricosum</i>	Argema	Domesticated	Alemu and sandford 1991
<i>Ensete ventricosum</i>	Argema	Domesticated	Gizachew 2000
<i>Ensete ventricosum</i>	Argema	Domesticated	McKnight report 2014
<i>Ensete ventricosum</i>	Argema	Domesticated	Tabogie 1997
<i>Ensete ventricosum</i>	Argema	Domesticated	Yemataw 2016
<i>Ensete ventricosum</i>	Argo	Domesticated	Tesfaye and Ludders 2002
<i>Ensete ventricosum</i>	Arikiya	Domesticated	McKnight report 2014
<i>Ensete ventricosum</i>	Arisho	Domesticated	Olango 2015
<i>Ensete ventricosum</i>	Arisho	Domesticated	Tsegaye 2002
<i>Ensete ventricosum</i>	Ark	Domesticated	Bogale <i>et al</i> 2004
<i>Ensete ventricosum</i>	Arke	Domesticated	Tsegaye 2002
<i>Ensete ventricosum</i>	Arkeya	Domesticated	McKnight report 2014
<i>Ensete ventricosum</i>	Arkia	Domesticated	Alemu and sandford 1991
<i>Ensete ventricosum</i>	Arkia	Domesticated	Olango 2015
<i>Ensete ventricosum</i>	Arkia	Domesticated	Tsegaye 2002
<i>Ensete ventricosum</i>	Arkia	Domesticated	Zengele 2017
<i>Ensete ventricosum</i>	Arkiya	Domesticated	Bekele <i>et al</i> 1998
<i>Ensete ventricosum</i>	Arkiya	Domesticated	McKnight report 2014
<i>Ensete ventricosum</i>	Arkiya	Domesticated	Olango 2014
<i>Ensete ventricosum</i>	Arkiya	Domesticated	Shumbulo 2012
<i>Ensete ventricosum</i>	Arkiya	Domesticated	Zengele 2017
<i>Ensete ventricosum</i>	Arkja	Domesticated	Addis 2005
<i>Ensete ventricosum</i>	Arko	Domesticated	Addis 2005
<i>Ensete ventricosum</i>	Arkya	Domesticated	Welde-Michael et al. 2008
<i>Ensete ventricosum</i>	Arpha	Domesticated	Bogale <i>et al</i> 2004
<i>Ensete ventricosum</i>	Arrishsho	Domesticated	Assefa and Fitamo 2016
<i>Ensete ventricosum</i>	Arrkiia	Domesticated	Zippel 2005
<i>Ensete ventricosum</i>	Ashakit	Domesticated	McKnight report 2014
<i>Ensete ventricosum</i>	Ashakit	Domesticated	Yemataw 2016
<i>Ensete ventricosum</i>	Ashamosa	Domesticated	Mulualem 2014
<i>Ensete ventricosum</i>	Ashekit	Domesticated	McKnight report 2014
<i>Ensete ventricosum</i>	Ashura	Domesticated	Tabogie 1997
<i>Ensete ventricosum</i>	Ashura	Domesticated	Yemataw <i>et al.</i> 2012

<i>Ensete ventricosum</i>	Ashure	Domesticated	Chala 2016
<i>Ensete ventricosum</i>	Asikala	Domesticated	Assefa and Fitamo 2016
<i>Ensete ventricosum</i>	Askala	Domesticated	Addis 2005
<i>Ensete ventricosum</i>	Askala	Domesticated	Tesfaye and Ludders 2002
<i>Ensete ventricosum</i>	Askale	Domesticated	McKnight report 2014
<i>Ensete ventricosum</i>	Astara	Domesticated	Addis 2005
<i>Ensete ventricosum</i>	Astara	Domesticated	Bogale <i>et al</i> 2004
<i>Ensete ventricosum</i>	Astara	Domesticated	Gizachew 2000
<i>Ensete ventricosum</i>	Astara	Domesticated	McKnight report 2014
<i>Ensete ventricosum</i>	Astara	Domesticated	Mojo 2017
<i>Ensete ventricosum</i>	Astara	Domesticated	Mulualem 2014
<i>Ensete ventricosum</i>	Astara	Domesticated	Olango 2015
<i>Ensete ventricosum</i>	Astara	Domesticated	Tesfaye and Ludders 2002
<i>Ensete ventricosum</i>	Astara	Domesticated	Tsegaye 2002
<i>Ensete ventricosum</i>	Astara	Domesticated	Tsegaye 2002
<i>Ensete ventricosum</i>	Astara	Domesticated	Welde-Michael <i>et al</i> . 2008
<i>Ensete ventricosum</i>	Astara	Domesticated	Welde-Michael et al. 2008
<i>Ensete ventricosum</i>	Astara	Domesticated	Welde-Michael et al. 2008
<i>Ensete ventricosum</i>	Astara	Domesticated	Yemataw 2016
<i>Ensete ventricosum</i>	Astara	Domesticated	McKnight report 2014
<i>Ensete ventricosum</i>	Astara	Domesticated	Nurebo 2017
<i>Ensete ventricosum</i>	Asutara	Domesticated	Yasuaki 2009
<i>Ensete ventricosum</i>	Ataro	Domesticated	Abadura 2017
<i>Ensete ventricosum</i>	Atefaro	Domesticated	Garedew 2017
<i>Ensete ventricosum</i>	Atero	Domesticated	Garedew 2017
<i>Ensete ventricosum</i>	Atirako	Domesticated	Garedew 2017
<i>Ensete ventricosum</i>	Atuma Boza	Domesticated	Gizachew 2000
<i>Ensete ventricosum</i>	Auto	Domesticated	Addis 2005
<i>Ensete ventricosum</i>	Awulecho	Domesticated	Tsegaye 2002
<i>Ensete ventricosum</i>	Awulichio	Domesticated	Tesfaye and Ludders 2002
<i>Ensete ventricosum</i>	Awuneda	Domesticated	Tsegaye 2002
<i>Ensete ventricosum</i>	Ayase	Domesticated	McKnight report 2014
<i>Ensete ventricosum</i>	Aydera	Domesticated	Tsegaye 2002
<i>Ensete ventricosum</i>	Ayi Boso	Domesticated	Abadura 2017
<i>Ensete ventricosum</i>	Ayichura	Domesticated	Addis 2005
<i>Ensete ventricosum</i>	Ayidara	Domesticated	Assefa and Fitamo 2016
<i>Ensete ventricosum</i>	Ayissade	Domesticated	Olango 2015
<i>Ensete ventricosum</i>	Ayiwagne	Domesticated	Addis 2005
<i>Ensete ventricosum</i>	Ayna	Domesticated	Gizachew 2000
<i>Ensete ventricosum</i>	Bacho	Domesticated	Addis 2005
<i>Ensete ventricosum</i>	Badadia	Domesticated	Olango 2014
<i>Ensete ventricosum</i>	Badadia	Domesticated	Tsegaye 2002
<i>Ensete ventricosum</i>	Badadia	Domesticated	Zengele 2017
<i>Ensete ventricosum</i>	Badado	Domesticated	Tesfaye and Ludders 2002
<i>Ensete ventricosum</i>	Badedet	Domesticated	Addis 2005
<i>Ensete ventricosum</i>	Badedet	Domesticated	McKnight report 2014
<i>Ensete ventricosum</i>	Badedit	Domesticated	McKnight report 2014
<i>Ensete ventricosum</i>	Bado	Domesticated	Abadura 2017
<i>Ensete ventricosum</i>	Baio	Domesticated	Addis 2005
<i>Ensete ventricosum</i>	Bajo	Domesticated	Abadura 2017

<i>Ensete ventricosum</i>	Bala	Domesticated	Olango 2014
<i>Ensete ventricosum</i>	Bala	Domesticated	Shumbulo 2012
<i>Ensete ventricosum</i>	Bala	Domesticated	Zengele 2017
<i>Ensete ventricosum</i>	Balicho	Domesticated	Tesfaye and Ludders 2002
<i>Ensete ventricosum</i>	Ballawuso	Domesticated	Abadura 2017
<i>Ensete ventricosum</i>	Banga	Domesticated	Olango 2014
<i>Ensete ventricosum</i>	Banga	Domesticated	Tabogie 1997
<i>Ensete ventricosum</i>	Banga	Domesticated	Tsegaye 2002
<i>Ensete ventricosum</i>	Banga	Domesticated	Zengele 2017
<i>Ensete ventricosum</i>	Banga Arkya	Domesticated	Gizachew 2000
<i>Ensete ventricosum</i>	Bango	Domesticated	Alemu and sandford 1991
<i>Ensete ventricosum</i>	Banko	Domesticated	McKnight report 2014
<i>Ensete ventricosum</i>	Baradi	Domesticated	Abadura 2017
<i>Ensete ventricosum</i>	Baradiboso	Domesticated	Garedew 2017
<i>Ensete ventricosum</i>	Barasho	Domesticated	Abadura 2017
<i>Ensete ventricosum</i>	Barxhe	Domesticated	Bogale <i>et al</i> 2004
<i>Ensete ventricosum</i>	Batato	Domesticated	Garedew 2017
<i>Ensete ventricosum</i>	Batato	Domesticated	Abadura 2017
<i>Ensete ventricosum</i>	Baze	Domesticated	McKnight report 2014
<i>Ensete ventricosum</i>	Bazereye	Domesticated	McKnight report 2014
<i>Ensete ventricosum</i>	Bazeriet	Domesticated	Welde-Michael <i>et al</i> . 2008
<i>Ensete ventricosum</i>	Bazeze	Domesticated	Addis 2005
<i>Ensete ventricosum</i>	Bchecho	Domesticated	Addis 2005
<i>Ensete ventricosum</i>	Bdnta	Domesticated	Alemu and sandford 1991
<i>Ensete ventricosum</i>	Becherota	Domesticated	Tabogie 1997
<i>Ensete ventricosum</i>	Bedada	Domesticated	Addis 2005
<i>Ensete ventricosum</i>	Bedade	Domesticated	McKnight report 2014
<i>Ensete ventricosum</i>	Bedade	Domesticated	Nurebo 2017
<i>Ensete ventricosum</i>	Bedadedda	Domesticated	Mulualem 2014
<i>Ensete ventricosum</i>	Bedadedda	Domesticated	Tsegaye 2002
<i>Ensete ventricosum</i>	Bedadia	Domesticated	Alemu and sandford 1991
<i>Ensete ventricosum</i>	Bedadia	Domesticated	Olango 2015
<i>Ensete ventricosum</i>	Bedadya	Domesticated	Gizachew 2000
<i>Ensete ventricosum</i>	Bededet	Domesticated	Bogale <i>et al</i> 2004
<i>Ensete ventricosum</i>	Bededia	Domesticated	Tabogie 1997
<i>Ensete ventricosum</i>	Bedentia	Domesticated	Alemu and sandford 1991
<i>Ensete ventricosum</i>	Bedio	Domesticated	Garedew 2017
<i>Ensete ventricosum</i>	Bedo	Domesticated	Garedew 2017
<i>Ensete ventricosum</i>	Bekecho	Domesticated	Tsegaye 2002
<i>Ensete ventricosum</i>	Beker	Domesticated	McKnight report 2014
<i>Ensete ventricosum</i>	Bekucho	Domesticated	Nurebo 2017
<i>Ensete ventricosum</i>	Belawso	Domesticated	Garedew 2017
<i>Ensete ventricosum</i>	Bellezbe	Domesticated	Addis 2005
<i>Ensete ventricosum</i>	Beneja	Domesticated	Tsegaye 2002
<i>Ensete ventricosum</i>	Beneze	Domesticated	McKnight report 2014
<i>Ensete ventricosum</i>	Benezhe	Domesticated	Bogale <i>et al</i> 2004
<i>Ensete ventricosum</i>	Benezhe	Domesticated	McKnight report 2014
<i>Ensete ventricosum</i>	Benja	Domesticated	Nurebo 2017
<i>Ensete ventricosum</i>	Benje	Domesticated	Addis 2005
<i>Ensete ventricosum</i>	Benuwa	Domesticated	Olango 2014

<i>Ensete ventricosum</i>	Benuwa	Domesticated	Tsegaye 2002
<i>Ensete ventricosum</i>	Benuwa	Domesticated	Zengele 2017
<i>Ensete ventricosum</i>	Bera	Domesticated	McKnight report 2014
<i>Ensete ventricosum</i>	Beradi	Domesticated	Garedew 2017
<i>Ensete ventricosum</i>	Berasa	Domesticated	Addis 2005
<i>Ensete ventricosum</i>	Berasho	Domesticated	Garedew 2017
<i>Ensete ventricosum</i>	Berbo	Domesticated	McKnight report 2014
<i>Ensete ventricosum</i>	Bergia	Domesticated	Alemu and sandford 1991
<i>Ensete ventricosum</i>	Bergude	Domesticated	Olango 2015
<i>Ensete ventricosum</i>	Bergudya	Domesticated	Gizachew 2000
<i>Ensete ventricosum</i>	Berjya	Domesticated	Gizachew 2000
<i>Ensete ventricosum</i>	Berzi	Domesticated	Addis 2005
<i>Ensete ventricosum</i>	Beshera	Domesticated	Yemataw <i>et al.</i> 2012
<i>Ensete ventricosum</i>	Betato	Domesticated	Garedew 2017
<i>Ensete ventricosum</i>	Binasho	Domesticated	Garedew 2017
<i>Ensete ventricosum</i>	Bino	Domesticated	Bekele <i>et al</i> 1998
<i>Ensete ventricosum</i>	Bino	Domesticated	McKnight report 2014
<i>Ensete ventricosum</i>	Bino	Domesticated	Olango 2015
<i>Ensete ventricosum</i>	Bino	Domesticated	Yemataw 2016
<i>Ensete ventricosum</i>	Bira	Domesticated	Addis 2005
<i>Ensete ventricosum</i>	Bira	Domesticated	McKnight report 2014
<i>Ensete ventricosum</i>	Bira	Domesticated	Tsegaye 2002
<i>Ensete ventricosum</i>	Birbo	Domesticated	Assefa and Fitamo 2016
<i>Ensete ventricosum</i>	Birbo	Domesticated	McKnight report 2014
<i>Ensete ventricosum</i>	Birbo	Domesticated	Tesfaye and Ludders 2002
<i>Ensete ventricosum</i>	Birbo	Domesticated	Tsegaye 2002
<i>Ensete ventricosum</i>	Birra	Domesticated	Assefa and Fitamo 2016
<i>Ensete ventricosum</i>	Birra	Domesticated	Tesfaye and Ludders 2002
<i>Ensete ventricosum</i>	Birra	Domesticated	Yasuaki 2009
<i>Ensete ventricosum</i>	Birtukan	Domesticated	Addis 2005
<i>Ensete ventricosum</i>	Biru-Damala	Domesticated	Assefa and Fitamo 2016
<i>Ensete ventricosum</i>	Bishare	Domesticated	Addis 2005
<i>Ensete ventricosum</i>	Bishato	Domesticated	Tabogie 1997
<i>Ensete ventricosum</i>	Bishato	Domesticated	Yemataw <i>et al.</i> 2012
<i>Ensete ventricosum</i>	Bishkanchiwe	Domesticated	Yemataw <i>et al.</i> 2012
<i>Ensete ventricosum</i>	Bob(W)Ete-Ado	Domesticated	Tesfaye and Ludders 2002
<i>Ensete ventricosum</i>	Bocho	Domesticated	Abadura 2017
<i>Ensete ventricosum</i>	Bocho	Domesticated	Addis 2005
<i>Ensete ventricosum</i>	Bocho	Domesticated	Bogale <i>et al</i> 2004
<i>Ensete ventricosum</i>	Boda	Domesticated	Alemu and sandford 1991
<i>Ensete ventricosum</i>	Bodo	Domesticated	Addis 2005
<i>Ensete ventricosum</i>	Bokessa	Domesticated	Nurebo 2017
<i>Ensete ventricosum</i>	Bokucho	Domesticated	Tsegaye 2002
<i>Ensete ventricosum</i>	Boliae	Domesticated	Alemu and sandford 1991
<i>Ensete ventricosum</i>	Boluborrancho	Domesticated	Yasuaki 2009
<i>Ensete ventricosum</i>	Bolucho	Domesticated	Yasuaki 2009
<i>Ensete ventricosum</i>	Bombe	Domesticated	Gizachew 2000
<i>Ensete ventricosum</i>	Bonna Azo	Domesticated	Alemu and sandford 1991
<i>Ensete ventricosum</i>	Boowe	Domesticated	Assefa and Fitamo 2016
<i>Ensete ventricosum</i>	Boowete-Ado	Domesticated	Assefa and Fitamo 2016

<i>Ensete ventricosum</i>	Bora	Domesticated	Olango 2014
<i>Ensete ventricosum</i>	Bora	Domesticated	Zengele 2017
<i>Ensete ventricosum</i>	Borbodancho	Domesticated	Tesfaye and Ludders 2002
<i>Ensete ventricosum</i>	Borbodancho	Domesticated	Tsegaye 2002
<i>Ensete ventricosum</i>	Borbodhicho	Domesticated	Assefa and Fitamo 2016
<i>Ensete ventricosum</i>	Boricho	Domesticated	Tesfaye and Ludders 2002
<i>Ensete ventricosum</i>	Boricho-	Domesticated	Tesfaye and Ludders 2002
<i>Ensete ventricosum</i>	Boroda-Wanadiyia	Domesticated	Olango 2014
<i>Ensete ventricosum</i>	Boroda-Wanadiyia	Domesticated	Zengele 2017
<i>Ensete ventricosum</i>	Borra	Domesticated	Alemu and sandford 1991
<i>Ensete ventricosum</i>	Bose	Domesticated	McKnight report 2014
<i>Ensete ventricosum</i>	Bose	Domesticated	Yemataw 2016
<i>Ensete ventricosum</i>	Bosena	Domesticated	Gizachew 2000
<i>Ensete ventricosum</i>	Boser	Domesticated	McKnight report 2014
<i>Ensete ventricosum</i>	Bosha	Domesticated	Alemu and sandford 1991
<i>Ensete ventricosum</i>	Bosie	Domesticated	Tabogie 1997
<i>Ensete ventricosum</i>	Bosina	Domesticated	Mulualem 2014
<i>Ensete ventricosum</i>	Boso	Domesticated	Garedew 2017
<i>Ensete ventricosum</i>	Boso	Domesticated	Addis 2005
<i>Ensete ventricosum</i>	Boso Baradi	Domesticated	Abadura 2017
<i>Ensete ventricosum</i>	Bosora	Domesticated	Nurebo 2017
<i>Ensete ventricosum</i>	Boss	Domesticated	Bogale <i>et al</i> 2004
<i>Ensete ventricosum</i>	Bosso	Domesticated	Abadura 2017
<i>Ensete ventricosum</i>	Bota Bukunya	Domesticated	Gizachew 2000
<i>Ensete ventricosum</i>	Bota Mazea	Domesticated	McKnight report 2014
<i>Ensete ventricosum</i>	Bota-Arkiya	Domesticated	Olango 2014
<i>Ensete ventricosum</i>	Bota-Arkiya	Domesticated	Zengele 2017
<i>Ensete ventricosum</i>	Botate	Domesticated	McKnight report 2014
<i>Ensete ventricosum</i>	Botate	Domesticated	Tesfaye and Ludders 2002
<i>Ensete ventricosum</i>	Bote	Domesticated	Addis 2005
<i>Ensete ventricosum</i>	Botia	Domesticated	Tabogie 1997
<i>Ensete ventricosum</i>	Botya	Domesticated	Olango 2014
<i>Ensete ventricosum</i>	Botya	Domesticated	Zengele 2017
<i>Ensete ventricosum</i>	Bowe-Uwisho	Domesticated	Tesfaye and Ludders 2002
<i>Ensete ventricosum</i>	Boza	Domesticated	McKnight report 2014
<i>Ensete ventricosum</i>	Buacho	Domesticated	Welde-Michael <i>et al.</i> 2008
<i>Ensete ventricosum</i>	Buba	Domesticated	Gizachew 2000
<i>Ensete ventricosum</i>	Bubure	Domesticated	Addis 2005
<i>Ensete ventricosum</i>	Buchame	Domesticated	Nurebo 2017
<i>Ensete ventricosum</i>	Budaro	Domesticated	Olango 2014
<i>Ensete ventricosum</i>	Budaro	Domesticated	Tsegaye 2002
<i>Ensete ventricosum</i>	Budaro	Domesticated	Zengele 2017
<i>Ensete ventricosum</i>	Buduntua	Domesticated	Alemu and sandford 1991
<i>Ensete ventricosum</i>	Bufare	Domesticated	Tesfaye and Ludders 2002
<i>Ensete ventricosum</i>	Bufare	Domesticated	Tsegaye 2002
<i>Ensete ventricosum</i>	Buffare	Domesticated	Chala 2016
<i>Ensete ventricosum</i>	Buffare	Domesticated	Welde-Michael <i>et al.</i> 2008
<i>Ensete ventricosum</i>	Bui lo	Domesticated	Tsegaye 2002
<i>Ensete ventricosum</i>	Buio-Midasho	Domesticated	Tesfaye and Ludders 2002
<i>Ensete ventricosum</i>	Bukinia	Domesticated	Olango 2014

<i>Ensete ventricosum</i>	Bukinia	Domesticated	Olango 2015
<i>Ensete ventricosum</i>	Bukinia	Domesticated	Tabogie 1997
<i>Ensete ventricosum</i>	Bukinia	Domesticated	Zengele 2017
<i>Ensete ventricosum</i>	Bukma	Domesticated	Bogale <i>et al</i> 2004
<i>Ensete ventricosum</i>	Bukunia	Domesticated	Alemu and sandford 1991
<i>Ensete ventricosum</i>	Bukunia	Domesticated	Tsegaye 2002
<i>Ensete ventricosum</i>	Bukunia Fara	Domesticated	Zengele 2017
<i>Ensete ventricosum</i>	Bukuniya	Domesticated	McKnight report 2014
<i>Ensete ventricosum</i>	Bukuniya	Domesticated	Yemataw 2016
<i>Ensete ventricosum</i>	Bukunya	Domesticated	Gizachew 2000
<i>Ensete ventricosum</i>	Bulbul	Domesticated	Addis 2005
<i>Ensete ventricosum</i>	Bulla	Domesticated	Gizachew 2000
<i>Ensete ventricosum</i>	Bulla	Domesticated	Tesfaye and Ludders 2002
<i>Ensete ventricosum</i>	Bulle	Domesticated	Yemataw <i>et al.</i> 2012
<i>Ensete ventricosum</i>	Bullo	Domesticated	Assefa and Fitamo 2016
<i>Ensete ventricosum</i>	Bullua	Domesticated	Tabogie 1997
<i>Ensete ventricosum</i>	Bulua	Domesticated	Olango 2015
<i>Ensete ventricosum</i>	Buluwa	Domesticated	Alemu and sandford 1991
<i>Ensete ventricosum</i>	Buluwa	Domesticated	Olango 2014
<i>Ensete ventricosum</i>	Buluwa	Domesticated	Zengele 2017
<i>Ensete ventricosum</i>	Bumbe	Domesticated	Yemataw <i>et al.</i> 2012
<i>Ensete ventricosum</i>	Bumbo	Domesticated	Bogale <i>et al</i> 2004
<i>Ensete ventricosum</i>	Bumicha	Domesticated	Alemu and sandford 1991
<i>Ensete ventricosum</i>	Bundiya	Domesticated	Olango 2014
<i>Ensete ventricosum</i>	Bundiya	Domesticated	Zengele 2017
<i>Ensete ventricosum</i>	Bundo	Domesticated	Alemu and sandford 1991
<i>Ensete ventricosum</i>	Bundusawa	Domesticated	Gizachew 2000
<i>Ensete ventricosum</i>	Bundwa	Domesticated	Tsegaye 2002
<i>Ensete ventricosum</i>	Bundwa	Domesticated	Zengele 2017
<i>Ensete ventricosum</i>	Burma	Domesticated	Alemu and sandford 1991
<i>Ensete ventricosum</i>	Busha	Domesticated	Addis 2005
<i>Ensete ventricosum</i>	Bushite	Domesticated	Addis 2005
<i>Ensete ventricosum</i>	Buso	Domesticated	Garedew 2017
<i>Ensete ventricosum</i>	Butta	Domesticated	Olango 2015
<i>Ensete ventricosum</i>	Catania	Domesticated	Zengele 2017
<i>Ensete ventricosum</i>	Cbacho	Domesticated	Tsegaye 2002
<i>Ensete ventricosum</i>	Chacharo	Domesticated	Abadura 2017
<i>Ensete ventricosum</i>	Chacho	Domesticated	Addis 2005
<i>Ensete ventricosum</i>	Chacho	Domesticated	Assefa and Fitamo 2016
<i>Ensete ventricosum</i>	Chacho	Domesticated	McKnight report 2014
<i>Ensete ventricosum</i>	Chacho	Domesticated	Tesfaye and Ludders 2002
<i>Ensete ventricosum</i>	Chacho	Domesticated	Tsegaye 2002
<i>Ensete ventricosum</i>	Chacho	Domesticated	Yasuaki 2009
<i>Ensete ventricosum</i>	Chamia	Domesticated	Olango 2015
<i>Ensete ventricosum</i>	Chamia	Domesticated	Tabogie 1997
<i>Ensete ventricosum</i>	Charalo	Domesticated	Abadura 2017
<i>Ensete ventricosum</i>	Charqima	Domesticated	Mojo 2017
<i>Ensete ventricosum</i>	Chechero	Domesticated	Garedew 2017
<i>Ensete ventricosum</i>	Checho	Domesticated	Alemu and sandford 1991
<i>Ensete ventricosum</i>	Chegacho	Domesticated	Garedew 2017



<i>Ensete ventricosum</i>	Chegacho	Domesticated	Abadura 2017
<i>Ensete ventricosum</i>	Chekaro	Domesticated	Garedew 2017
<i>Ensete ventricosum</i>	Chelako	Domesticated	Yemataw <i>et al.</i> 2012
<i>Ensete ventricosum</i>	Chele	Domesticated	Addis 2005
<i>Ensete ventricosum</i>	Chelello	Domesticated	Garedew 2017
<i>Ensete ventricosum</i>	Chema	Domesticated	Addis 2005
<i>Ensete ventricosum</i>	Chem-A	Domesticated	Alemu and sandford 1991
<i>Ensete ventricosum</i>	Chemeretya	Domesticated	Gizachew 2000
<i>Ensete ventricosum</i>	Chemia	Domesticated	Olango 2014
<i>Ensete ventricosum</i>	Chemia	Domesticated	Zengele 2017
<i>Ensete ventricosum</i>	Chemishe	Domesticated	Alemu and sandford 1991
<i>Ensete ventricosum</i>	Chemo	Domesticated	Alemu and sandford 1991
<i>Ensete ventricosum</i>	Chenga	Domesticated	Addis 2005
<i>Ensete ventricosum</i>	Cherallo	Domesticated	Garedew 2017
<i>Ensete ventricosum</i>	Cherga Chemo	Domesticated	Alemu and sandford 1991
<i>Ensete ventricosum</i>	Cheri	Domesticated	Garedew 2017
<i>Ensete ventricosum</i>	Cherk	Domesticated	McKnight report 2014
<i>Ensete ventricosum</i>	Cherkuwa	Domesticated	Alemu and sandford 1991
<i>Ensete ventricosum</i>	Cheromatia	Domesticated	Alemu and sandford 1991
<i>Ensete ventricosum</i>	Chiche	Domesticated	Addis 2005
<i>Ensete ventricosum</i>	Chiche	Domesticated	Bekele <i>et al</i> 1998
<i>Ensete ventricosum</i>	Chichia	Domesticated	Alemu and sandford 1991
<i>Ensete ventricosum</i>	Chichia	Domesticated	Olango 2014
<i>Ensete ventricosum</i>	Chichia	Domesticated	Olango 2015
<i>Ensete ventricosum</i>	Chichia	Domesticated	Tsegaye 2002
<i>Ensete ventricosum</i>	Chichia	Domesticated	Zengele 2017
<i>Ensete ventricosum</i>	Chichiya	Domesticated	Shumbulo 2012
<i>Ensete ventricosum</i>	Chicho	Domesticated	Olango 2015
<i>Ensete ventricosum</i>	Chichya	Domesticated	Gizachew 2000
<i>Ensete ventricosum</i>	Chiiaco	Domesticated	Tesfaye and Ludders 2002
<i>Ensete ventricosum</i>	Chikaro	Domesticated	Abadura 2017
<i>Ensete ventricosum</i>	Chikero	Domesticated	Garedew 2017
<i>Ensete ventricosum</i>	Chohot	Domesticated	McKnight report 2014
<i>Ensete ventricosum</i>	Chohot	Domesticated	Yemataw 2016
<i>Ensete ventricosum</i>	Choro	Domesticated	Garedew 2017
<i>Ensete ventricosum</i>	Choro	Domesticated	Addis 2005
<i>Ensete ventricosum</i>	Chorore	Domesticated	Olango 2014
<i>Ensete ventricosum</i>	Chorore	Domesticated	Tsegaye 2002
<i>Ensete ventricosum</i>	Chorore	Domesticated	Tsehay and Kebebew 2006
<i>Ensete ventricosum</i>	Chorore	Domesticated	Zengele 2017
<i>Ensete ventricosum</i>	Chovet	Domesticated	McKnight report 2014
<i>Ensete ventricosum</i>	Cultivar	Domesticated	Bogale <i>et al</i> 2004
<i>Ensete ventricosum</i>	Daakai	Domesticated	Shigeta 1990
<i>Ensete ventricosum</i>	Dabe	Domesticated	Addis 2005
<i>Ensete ventricosum</i>	Dako	Domesticated	Alemu and sandford 1991
<i>Ensete ventricosum</i>	Dalank	Domesticated	Bogale <i>et al</i> 2004
<i>Ensete ventricosum</i>	Dalulia	Domesticated	Olango 2014
<i>Ensete ventricosum</i>	Dalulia	Domesticated	Tsegaye 2002
<i>Ensete ventricosum</i>	Dalulia	Domesticated	Zengele 2017
<i>Ensete ventricosum</i>	Damala	Domesticated	Assefa and Fitamo 2016

<i>Ensete ventricosum</i>	Damala	Domesticated	Tsegaye 2002
<i>Ensete ventricosum</i>	Damalla	Domesticated	Yasuaki 2009
<i>Ensete ventricosum</i>	Damashasha	Domesticated	Tesfaye and Ludders 2002
<i>Ensete ventricosum</i>	Damela	Domesticated	Addis 2005
<i>Ensete ventricosum</i>	Dansitee	Domesticated	Assefa and Fitamo 2016
<i>Ensete ventricosum</i>	Darashite	Domesticated	Yasuaki 2009
<i>Ensete ventricosum</i>	Dargicha	Domesticated	Tesfaye and Ludders 2002
<i>Ensete ventricosum</i>	Darye	Domesticated	Mojo 2017
<i>Ensete ventricosum</i>	Dawro	Domesticated	McKnight report 2014
<i>Ensete ventricosum</i>	Dawro-Arkiya	Domesticated	Olango 2014
<i>Ensete ventricosum</i>	Dawro-Arkiya	Domesticated	Zengele 2017
<i>Ensete ventricosum</i>	Degere	Domesticated	Addis 2005
<i>Ensete ventricosum</i>	Dego	Domesticated	Addis 2005
<i>Ensete ventricosum</i>	Dego	Domesticated	Bogale <i>et al</i> 2004
<i>Ensete ventricosum</i>	Dego	Domesticated	Tsegaye 2002
<i>Ensete ventricosum</i>	Degomerza	Domesticated	McKnight report 2014
<i>Ensete ventricosum</i>	Deguwa	Domesticated	Alemu and sandford 1991
<i>Ensete ventricosum</i>	Deleluya	Domesticated	Tabogie 1997
<i>Ensete ventricosum</i>	Dellea1	Domesticated	Olango 2015
<i>Ensete ventricosum</i>	Dellea2	Domesticated	Olango 2015
<i>Ensete ventricosum</i>	Dellia	Domesticated	Alemu and sandford 1991
<i>Ensete ventricosum</i>	Delule	Domesticated	Addis 2005
<i>Ensete ventricosum</i>	Delulia	Domesticated	Alemu and sandford 1991
<i>Ensete ventricosum</i>	Delulya	Domesticated	Gizachew 2000
<i>Ensete ventricosum</i>	Delya	Domesticated	Gizachew 2000
<i>Ensete ventricosum</i>	Dem Woured	Domesticated	McKnight report 2014
<i>Ensete ventricosum</i>	Demala	Domesticated	Tesfaye and Ludders 2002
<i>Ensete ventricosum</i>	Dembeli	Domesticated	Addis 2005
<i>Ensete ventricosum</i>	Dena	Domesticated	Alemu and sandford 1991
<i>Ensete ventricosum</i>	Derasa Ado	Domesticated	Addis 2005
<i>Ensete ventricosum</i>	Derashicho	Domesticated	Addis 2005
<i>Ensete ventricosum</i>	Derasi	Domesticated	Tesfaye and Ludders 2002
<i>Ensete ventricosum</i>	Derasi-Ado	Domesticated	Tesfaye and Ludders 2002
<i>Ensete ventricosum</i>	Derasi-Demala	Domesticated	Tesfaye and Ludders 2002
<i>Ensete ventricosum</i>	Derasiti	Domesticated	Tesfaye and Ludders 2002
<i>Ensete ventricosum</i>	Derassa Addo	Domesticated	Tsegaye 2002
<i>Ensete ventricosum</i>	Derassa-Dimela	Domesticated	Yemataw <i>et al.</i> 2012
<i>Ensete ventricosum</i>	Derbo	Domesticated	Alemu and sandford 1991
<i>Ensete ventricosum</i>	Dere	Domesticated	Addis 2005
<i>Ensete ventricosum</i>	Dere	Domesticated	McKnight report 2014
<i>Ensete ventricosum</i>	Dere	Domesticated	Welde-Michael <i>et al.</i> 2008
<i>Ensete ventricosum</i>	Dergicha	Domesticated	Tsegaye 2002
<i>Ensete ventricosum</i>	Desho	Domesticated	McKnight report 2014
<i>Ensete ventricosum</i>	Dewarama	Domesticated	McKnight report 2014
<i>Ensete ventricosum</i>	Deya	Domesticated	Addis 2005
<i>Ensete ventricosum</i>	Diafaya	Domesticated	Addis 2005
<i>Ensete ventricosum</i>	Digmaz	Domesticated	Chala 2016
<i>Ensete ventricosum</i>	Digmerza	Domesticated	McKnight report 2014
<i>Ensete ventricosum</i>	Digo Merza	Domesticated	Gizachew 2000
<i>Ensete ventricosum</i>	Digomerza	Domesticated	Yemataw <i>et al.</i> 2012

<i>Ensete ventricosum</i>	Digo-Merza	Domesticated	Tabogie 1997
<i>Ensete ventricosum</i>	Dimoye	Domesticated	Addis 2005
<i>Ensete ventricosum</i>	Dine	Domesticated	Addis 2005
<i>Ensete ventricosum</i>	Dinke	Domesticated	Addis 2005
<i>Ensete ventricosum</i>	Diqa	Domesticated	McKnight report 2014
<i>Ensete ventricosum</i>	Diqa	Domesticated	Yemataw 2016
<i>Ensete ventricosum</i>	Dirbo	Domesticated	Addis 2005
<i>Ensete ventricosum</i>	Dirbo	Domesticated	Bogale <i>et al</i> 2004
<i>Ensete ventricosum</i>	Dirbo	Domesticated	Gizachew 2000
<i>Ensete ventricosum</i>	Dirbo	Domesticated	McKnight report 2014
<i>Ensete ventricosum</i>	Dirbo	Domesticated	Nurebo 2017
<i>Ensete ventricosum</i>	Dirbo	Domesticated	Tabogie 1997
<i>Ensete ventricosum</i>	Dirbo	Domesticated	Tsegaye 2002
<i>Ensete ventricosum</i>	Dirbuwa	Domesticated	Olango 2014
<i>Ensete ventricosum</i>	Dirbuwa	Domesticated	Olango 2015
<i>Ensete ventricosum</i>	Dirbuwa	Domesticated	Tabogie 1997
<i>Ensete ventricosum</i>	Dirbuwa	Domesticated	Zengele 2017
<i>Ensete ventricosum</i>	Disho	Domesticated	Bogale <i>et al</i> 2004
<i>Ensete ventricosum</i>	Disho	Domesticated	McKnight report 2014
<i>Ensete ventricosum</i>	Disho	Domesticated	Mulualem 2014
<i>Ensete ventricosum</i>	Disho	Domesticated	Nurebo 2017
<i>Ensete ventricosum</i>	Disho	Domesticated	Tabogie 1997
<i>Ensete ventricosum</i>	Disho	Domesticated	Tsegaye 2002
<i>Ensete ventricosum</i>	Dobramo	Domesticated	Tsegaye 2002
<i>Ensete ventricosum</i>	Dogiata	Domesticated	Alemu and sandford 1991
<i>Ensete ventricosum</i>	Dokezie	Domesticated	Alemu and sandford 1991
<i>Ensete ventricosum</i>	Doko	Domesticated	Olango 2015
<i>Ensete ventricosum</i>	Doko	Domesticated	Tsegaye 2002
<i>Ensete ventricosum</i>	Doko	Domesticated	Zengele 2017
<i>Ensete ventricosum</i>	Doko zuwa	Domesticated	Olango 2014
<i>Ensete ventricosum</i>	Doko zuwa	Domesticated	Tabogie 1997
<i>Ensete ventricosum</i>	Doko zuwa	Domesticated	Zengele 2017
<i>Ensete ventricosum</i>	Dokuwa	Domesticated	Olango 2014
<i>Ensete ventricosum</i>	Dokuwa	Domesticated	Shumbulo 2012
<i>Ensete ventricosum</i>	Dokuwa	Domesticated	Zengele 2017
<i>Ensete ventricosum</i>	Dole	Domesticated	Garedew 2017
<i>Ensete ventricosum</i>	Dolla	Domesticated	Olango 2015
<i>Ensete ventricosum</i>	Dongicho	Domesticated	Assefa and Fitamo 2016
<i>Ensete ventricosum</i>	Donkola	Domesticated	Gizachew 2000
<i>Ensete ventricosum</i>	Dorkie	Domesticated	Alemu and sandford 1991
<i>Ensete ventricosum</i>	Dorta	Domesticated	Gizachew 2000
<i>Ensete ventricosum</i>	Doviramo	Domesticated	Addis 2005
<i>Ensete ventricosum</i>	Doweramo	Domesticated	Assefa and Fitamo 2016
<i>Ensete ventricosum</i>	Dowiramo	Domesticated	Tesfaye and Ludders 2002
<i>Ensete ventricosum</i>	Dufcva	Domesticated	Alemu and sandford 1991
<i>Ensete ventricosum</i>	Dulga	Domesticated	Alemu and sandford 1991
<i>Ensete ventricosum</i>	Duwancho	Domesticated	Assefa and Fitamo 2016
<i>Ensete ventricosum</i>	Duwancho	Domesticated	Tesfaye and Ludders 2002
<i>Ensete ventricosum</i>	Echo (Wild)	Domesticated	Garedew 2017
<i>Ensete ventricosum</i>	Edo	Domesticated	Alemu and sandford 1991

<i>Ensete ventricosum</i>	Embata	Domesticated	McKnight report 2014
<i>Ensete ventricosum</i>	Eminiye	Domesticated	Welde-Michael et al. 2008
<i>Ensete ventricosum</i>	Enba	Domesticated	McKnight report 2014
<i>Ensete ventricosum</i>	Eniba	Domesticated	Addis 2005
<i>Ensete ventricosum</i>	Eniba	Domesticated	Mojo 2017
<i>Ensete ventricosum</i>	Enkufaye	Domesticated	McKnight report 2014
<i>Ensete ventricosum</i>	Enquafye	Domesticated	McKnight report 2014
<i>Ensete ventricosum</i>	Entada (Spontaneous Sucke	Domesticated	Olango 2015
<i>Ensete ventricosum</i>	Epoo	Wild	Chala 2016
<i>Ensete ventricosum</i>	Erasha	Domesticated	Olango 2014
<i>Ensete ventricosum</i>	Erasha	Domesticated	Tabogie 1997
<i>Ensete ventricosum</i>	Erasha	Domesticated	Zengele 2017
<i>Ensete ventricosum</i>	Erota	Domesticated	Alemu and sandford 1991
<i>Ensete ventricosum</i>	Erpa	Wild	Chala 2016
<i>Ensete ventricosum</i>	Erpha	Domesticated	Olango 2015
<i>Ensete ventricosum</i>	Eshamwesa	Domesticated	Tsegaye 2002
<i>Ensete ventricosum</i>	Esilamia	Domesticated	Tabogie 1997
<i>Ensete ventricosum</i>	Eslama	Domesticated	Addis 2005
<i>Ensete ventricosum</i>	Eslammia	Domesticated	Olango 2014
<i>Ensete ventricosum</i>	Eslammia	Domesticated	Zengele 2017
<i>Ensete ventricosum</i>	Etene	Domesticated	McKnight report 2014
<i>Ensete ventricosum</i>	Eti	Domesticated	Abadura 2017
<i>Ensete ventricosum</i>	Etinia	Domesticated	Tabogie 1997
<i>Ensete ventricosum</i>	Etne	Domesticated	McKnight report 2014
<i>Ensete ventricosum</i>	Fakushicho	Domesticated	Yasuaki 2009
<i>Ensete ventricosum</i>	Falakia	Domesticated	Shumbulo 2012
<i>Ensete ventricosum</i>	Falakiya	Domesticated	Olango 2014
<i>Ensete ventricosum</i>	Falakiya	Domesticated	Zengele 2017
<i>Ensete ventricosum</i>	Fara	Domesticated	Olango 2014
<i>Ensete ventricosum</i>	Fara	Domesticated	Tsegaye 2002
<i>Ensete ventricosum</i>	Fara	Domesticated	Zengele 2017
<i>Ensete ventricosum</i>	Farezye	Domesticated	Mojo 2017
<i>Ensete ventricosum</i>	Fe!O	Domesticated	Tesfaye and Ludders 2002
<i>Ensete ventricosum</i>	Fechachie	Domesticated	Tabogie 1997
<i>Ensete ventricosum</i>	Felkie	Domesticated	Tabogie 1997
<i>Ensete ventricosum</i>	Feluwa	Domesticated	Olango 2015
<i>Ensete ventricosum</i>	Feluwa	Domesticated	Tabogie 1997
<i>Ensete ventricosum</i>	Fenchariya-Yepa	Domesticated	Yemataw <i>et al.</i> 2012
<i>Ensete ventricosum</i>	Fenchereyepa	Domesticated	Gizachew 2000
<i>Ensete ventricosum</i>	Fenku	Domesticated	Olango 2014
<i>Ensete ventricosum</i>	Fenku	Domesticated	Olango 2015
<i>Ensete ventricosum</i>	Fenku	Domesticated	Zengele 2017
<i>Ensete ventricosum</i>	Fenqo	Domesticated	McKnight report 2014
<i>Ensete ventricosum</i>	Fenqo	Domesticated	Yemataw 2016
<i>Ensete ventricosum</i>	Ferchase	Domesticated	McKnight report 2014
<i>Ensete ventricosum</i>	Ferenjo	Domesticated	Addis 2005
<i>Ensete ventricosum</i>	Ferez	Domesticated	McKnight report 2014
<i>Ensete ventricosum</i>	Fereze	Domesticated	Addis 2005
<i>Ensete ventricosum</i>	Ferezia	Domesticated	Bogale <i>et al</i> 2004
<i>Ensete ventricosum</i>	Fugatessa	Domesticated	Welde-Michael et al. 2008

<i>Ensete ventricosum</i>	Funchi	Domesticated	Addis 2005
<i>Ensete ventricosum</i>	Gadami	Domesticated	McKnight report 2014
<i>Ensete ventricosum</i>	Gadime	Domesticated	Tesfaye and Ludders 2002
<i>Ensete ventricosum</i>	Gadime	Domesticated	Yasuaki 2009
<i>Ensete ventricosum</i>	Gaje	Domesticated	Addis 2005
<i>Ensete ventricosum</i>	Gajiboso	Domesticated	Garedew 2017
<i>Ensete ventricosum</i>	Gamachela	Domesticated	Tsegaye 2002
<i>Ensete ventricosum</i>	Gamechela	Domesticated	Tesfaye and Ludders 2002
<i>Ensete ventricosum</i>	Gandi	Domesticated	Garedew 2017
<i>Ensete ventricosum</i>	Ganga	Domesticated	Alemu and sandford 1991
<i>Ensete ventricosum</i>	Ganta	Domesticated	Addis 2005
<i>Ensete ventricosum</i>	Ganticha	Domesticated	Tesfaye and Ludders 2002
<i>Ensete ventricosum</i>	Ganticha	Domesticated	Yasuaki 2009
<i>Ensete ventricosum</i>	Ganticha-Bowe	Domesticated	Tesfaye and Ludders 2002
<i>Ensete ventricosum</i>	Garado	Domesticated	McKnight report 2014
<i>Ensete ventricosum</i>	Garanetsa	Domesticated	Olango 2015
<i>Ensete ventricosum</i>	Garawicho	Domesticated	Tesfaye and Ludders 2002
<i>Ensete ventricosum</i>	Garbo	Domesticated	Tsegaye 2002
<i>Ensete ventricosum</i>	Gare	Domesticated	McKnight report 2014
<i>Ensete ventricosum</i>	Garecha	Domesticated	Shigeta 1990
<i>Ensete ventricosum</i>	Garircho	Domesticated	Tsegaye 2002
<i>Ensete ventricosum</i>	Gariya	Domesticated	Mulualem 2014
<i>Ensete ventricosum</i>	Gariya	Domesticated	Tsegaye 2002
<i>Ensete ventricosum</i>	Garubo	Domesticated	Yasuaki 2009
<i>Ensete ventricosum</i>	Gashashya	Domesticated	Gizachew 2000
<i>Ensete ventricosum</i>	Gashikie	Domesticated	Alemu and sandford 1991
<i>Ensete ventricosum</i>	Gassa	Domesticated	Olango 2014
<i>Ensete ventricosum</i>	Gassa	Domesticated	Zengele 2017
<i>Ensete ventricosum</i>	Gatecho	Domesticated	McKnight report 2014
<i>Ensete ventricosum</i>	Gayo	Domesticated	Addis 2005
<i>Ensete ventricosum</i>	Gayo	Domesticated	Bogale <i>et al</i> 2004
<i>Ensete ventricosum</i>	Gazner	Domesticated	McKnight report 2014
<i>Ensete ventricosum</i>	Gazner	Domesticated	Yemataw 2016
<i>Ensete ventricosum</i>	Gebriela	Domesticated	Addis 2005
<i>Ensete ventricosum</i>	Gedeme	Domesticated	McKnight report 2014
<i>Ensete ventricosum</i>	Gedime	Domesticated	Addis 2005
<i>Ensete ventricosum</i>	Gedimee	Domesticated	Assefa and Fitamo 2016
<i>Ensete ventricosum</i>	Gedio-Ado	Domesticated	Assefa and Fitamo 2016
<i>Ensete ventricosum</i>	Gediwocho	Domesticated	Assefa and Fitamo 2016
<i>Ensete ventricosum</i>	Gedmo	Domesticated	Tsegaye 2002
<i>Ensete ventricosum</i>	Geemchella	Domesticated	Assefa and Fitamo 2016
<i>Ensete ventricosum</i>	Geena	Domesticated	Assefa and Fitamo 2016
<i>Ensete ventricosum</i>	Gefetanuwa	Domesticated	Olango 2014
<i>Ensete ventricosum</i>	Gefetanuwa	Domesticated	Tsegaye 2002
<i>Ensete ventricosum</i>	Gefetanuwa	Domesticated	Zengele 2017
<i>Ensete ventricosum</i>	Gefetenewa	Domesticated	Olango 2015
<i>Ensete ventricosum</i>	Gefetenna	Domesticated	Zippel 2005
<i>Ensete ventricosum</i>	Gefeteno	Domesticated	Addis 2005
<i>Ensete ventricosum</i>	Gefeteno	Domesticated	McKnight report 2014
<i>Ensete ventricosum</i>	Gefetenuwa	Domesticated	Alemu and sandford 1991

<i>Ensete ventricosum</i>	Gegebuwa	Domesticated	Alemu and sandford 1991
<i>Ensete ventricosum</i>	Geji	Domesticated	Abadura 2017
<i>Ensete ventricosum</i>	Geji Bosso	Domesticated	Abadura 2017
<i>Ensete ventricosum</i>	Gela	wild	Shigeta 1990
<i>Ensete ventricosum</i>	Gemburra	Domesticated	Alemu and sandford 1991
<i>Ensete ventricosum</i>	Gemo	Domesticated	Garedew 2017
<i>Ensete ventricosum</i>	Gemo	Domesticated	Abadura 2017
<i>Ensete ventricosum</i>	Gemorcha	Domesticated	Olango 2015
<i>Ensete ventricosum</i>	Gena	Domesticated	Addis 2005
<i>Ensete ventricosum</i>	Gena	Domesticated	Alemu and sandford 1991
<i>Ensete ventricosum</i>	Gena	Domesticated	Bekele <i>et al</i> 1998
<i>Ensete ventricosum</i>	Gena	Domesticated	Bogale <i>et al</i> 2004
<i>Ensete ventricosum</i>	Gena	Domesticated	Gizachew 2000
<i>Ensete ventricosum</i>	Gena	Domesticated	McKnight report 2014
<i>Ensete ventricosum</i>	Gena	Domesticated	Olango 2015
<i>Ensete ventricosum</i>	Gena	Domesticated	Olango 2015
<i>Ensete ventricosum</i>	Gena	Domesticated	Shigeta 1990
<i>Ensete ventricosum</i>	Gena	Domesticated	Tabogie 1997
<i>Ensete ventricosum</i>	Gena	Domesticated	Tesfaye and Ludders 2002
<i>Ensete ventricosum</i>	Gena	Domesticated	Tsegaye 2002
<i>Ensete ventricosum</i>	Gena	Domesticated	Yemataw 2016
<i>Ensete ventricosum</i>	Gena	Domesticated	Yemataw <i>et al.</i> 2012
<i>Ensete ventricosum</i>	Gena-3	Domesticated	Yemataw <i>et al.</i> 2012
<i>Ensete ventricosum</i>	Genaowo	Domesticated	Olango 2014
<i>Ensete ventricosum</i>	Genaowo	Domesticated	Zengele 2017
<i>Ensete ventricosum</i>	Genbo	Domesticated	McKnight report 2014
<i>Ensete ventricosum</i>	Genebuwa	Domesticated	Alemu and sandford 1991
<i>Ensete ventricosum</i>	Genesa	Domesticated	Tsegaye 2002
<i>Ensete ventricosum</i>	Genesa	Domesticated	Zengele 2017
<i>Ensete ventricosum</i>	Genessa	Domesticated	Alemu and sandford 1991
<i>Ensete ventricosum</i>	Genessa	Domesticated	Olango 2014
<i>Ensete ventricosum</i>	Genessa	Domesticated	Tabogie 1997
<i>Ensete ventricosum</i>	Genessa	Domesticated	Zengele 2017
<i>Ensete ventricosum</i>	Genjo	Domesticated	Garedew 2017
<i>Ensete ventricosum</i>	Genjo	Domesticated	Abadura 2017
<i>Ensete ventricosum</i>	Genjo	Domesticated	Addis 2005
<i>Ensete ventricosum</i>	Genko	Domesticated	Tsegaye 2002
<i>Ensete ventricosum</i>	Genna	Domesticated	McKnight report 2014
<i>Ensete ventricosum</i>	Genna	Domesticated	Olango 2014
<i>Ensete ventricosum</i>	Genna	Domesticated	Shumbulo 2012
<i>Ensete ventricosum</i>	Genna	Domesticated	Zengele 2017
<i>Ensete ventricosum</i>	Geno	Domesticated	Garedew 2017
<i>Ensete ventricosum</i>	Geno	Domesticated	Abadura 2017
<i>Ensete ventricosum</i>	Geno	Domesticated	Addis 2005
<i>Ensete ventricosum</i>	Geno	Domesticated	Bogale <i>et al</i> 2004
<i>Ensete ventricosum</i>	Gentich	Domesticated	Bogale <i>et al</i> 2004
<i>Ensete ventricosum</i>	Genticha	Domesticated	Addis 2005
<i>Ensete ventricosum</i>	Genticha	Domesticated	McKnight report 2014
<i>Ensete ventricosum</i>	Genticha	Domesticated	Tsegaye 2002
<i>Ensete ventricosum</i>	Genticha	Domesticated	Welde-Michael <i>et al.</i> 2008

<i>Ensete ventricosum</i>	Gentichcho	Domesticated	Assefa and Fitamo 2016
<i>Ensete ventricosum</i>	Gerba	Domesticated	Addis 2005
<i>Ensete ventricosum</i>	Gerbo	Domesticated	Tesfaye and Ludders 2002
<i>Ensete ventricosum</i>	Gerbo	Domesticated	Yemataw <i>et al.</i> 2012
<i>Ensete ventricosum</i>	Gerericho	Domesticated	Tesfaye and Ludders 2002
<i>Ensete ventricosum</i>	Geriye	Domesticated	Nurebo 2017
<i>Ensete ventricosum</i>	Gesa	Domesticated	Bogale <i>et al.</i> 2004
<i>Ensete ventricosum</i>	Gesher	Domesticated	McKnight report 2014
<i>Ensete ventricosum</i>	Geshite	Domesticated	Bekele <i>et al.</i> 1998
<i>Ensete ventricosum</i>	Gessa	Domesticated	Gizachew 2000
<i>Ensete ventricosum</i>	Gessierie	Domesticated	Alemu and sandford 1991
<i>Ensete ventricosum</i>	Gez	Domesticated	Addis 2005
<i>Ensete ventricosum</i>	Gezetia	Domesticated	Tabogie 1997
<i>Ensete ventricosum</i>	Gezetiya	Domesticated	Olango 2014
<i>Ensete ventricosum</i>	Gezetiya	Domesticated	Zengele 2017
<i>Ensete ventricosum</i>	Geziwet	Domesticated	Chala 2016
<i>Ensete ventricosum</i>	Geziwet	Domesticated	Welde-Michael <i>et al.</i> 2008
<i>Ensete ventricosum</i>	Gillo	Domesticated	Garedew 2017
<i>Ensete ventricosum</i>	Gillo	Domesticated	Abadura 2017
<i>Ensete ventricosum</i>	Gimbiwe	Domesticated	Mojo 2017
<i>Ensete ventricosum</i>	Gimbo	Domesticated	Addis 2005
<i>Ensete ventricosum</i>	Gimbo	Domesticated	Bogale <i>et al.</i> 2004
<i>Ensete ventricosum</i>	Gimbo	Domesticated	McKnight report 2014
<i>Ensete ventricosum</i>	Gimbo	Domesticated	Mulualem 2014
<i>Ensete ventricosum</i>	Gimbo	Domesticated	Tabogie 1997
<i>Ensete ventricosum</i>	Gimbo	Domesticated	Tsegaye 2002
<i>Ensete ventricosum</i>	Gimbura	Domesticated	Addis 2005
<i>Ensete ventricosum</i>	Ginawa	Domesticated	Alemu and sandford 1991
<i>Ensete ventricosum</i>	Ginawa	Domesticated	Tabogie 1997
<i>Ensete ventricosum</i>	Ginbo	Domesticated	Nurebo 2017
<i>Ensete ventricosum</i>	Ginbura	Domesticated	McKnight report 2014
<i>Ensete ventricosum</i>	Gini	Domesticated	Garedew 2017
<i>Ensete ventricosum</i>	Ginimbu	Domesticated	Bogale <i>et al.</i> 2004
<i>Ensete ventricosum</i>	Girbo	Domesticated	Bogale <i>et al.</i> 2004
<i>Ensete ventricosum</i>	Gishera	Domesticated	McKnight report 2014
<i>Ensete ventricosum</i>	Gishera	Domesticated	Olango 2014
<i>Ensete ventricosum</i>	Gishera	Domesticated	Tabogie 1997
<i>Ensete ventricosum</i>	Gishera	Domesticated	Tsegaye 2002
<i>Ensete ventricosum</i>	Gishera	Domesticated	Tsegaye 2002
<i>Ensete ventricosum</i>	Gishera	Domesticated	Welde-Michael <i>et al.</i> 2008
<i>Ensete ventricosum</i>	Gishera	Domesticated	Zengele 2017
<i>Ensete ventricosum</i>	Gishira	Domesticated	Addis 2005
<i>Ensete ventricosum</i>	Gishira	Domesticated	McKnight report 2014
<i>Ensete ventricosum</i>	Gishira	Domesticated	Mulualem 2014
<i>Ensete ventricosum</i>	Gishira	Domesticated	Nurebo 2017
<i>Ensete ventricosum</i>	Gixo	Domesticated	Abadura 2017
<i>Ensete ventricosum</i>	Goa	Domesticated	Alemu and sandford 1991
<i>Ensete ventricosum</i>	Godare	Domesticated	Assefa and Fitamo 2016
<i>Ensete ventricosum</i>	Godaria	Domesticated	Tsegaye 2002
<i>Ensete ventricosum</i>	Godaria	Domesticated	Zengele 2017

<i>Ensete ventricosum</i>	Godariya	Domesticated	Olango 2014
<i>Ensete ventricosum</i>	Godariya	Domesticated	Shumbulo 2012
<i>Ensete ventricosum</i>	Godariya	Domesticated	Zengele 2017
<i>Ensete ventricosum</i>	Godere	Domesticated	Addis 2005
<i>Ensete ventricosum</i>	Goderia	Domesticated	Tabogie 1997
<i>Ensete ventricosum</i>	Goderia	Domesticated	Yemataw <i>et al.</i> 2012
<i>Ensete ventricosum</i>	Godoria	Domesticated	McKnight report 2014
<i>Ensete ventricosum</i>	Goemorphie	Domesticated	Tabogie 1997
<i>Ensete ventricosum</i>	Goemorra	Domesticated	Tabogie 1997
<i>Ensete ventricosum</i>	Goemorssa	Domesticated	Tabogie 1997
<i>Ensete ventricosum</i>	Gogotea	Domesticated	Addis 2005
<i>Ensete ventricosum</i>	Golom	Domesticated	Yasuaki 2009
<i>Ensete ventricosum</i>	Goloma	Domesticated	Assefa and Fitamo 2016
<i>Ensete ventricosum</i>	Goloma	Domesticated	Tesfaye and Ludders 2002
<i>Ensete ventricosum</i>	Gomarssa	Domesticated	Alemu and sandford 1991
<i>Ensete ventricosum</i>	Gomorcha	Domesticated	Olango 2014
<i>Ensete ventricosum</i>	Gomorcha	Domesticated	Zengele 2017
<i>Ensete ventricosum</i>	Gonasa	Domesticated	Bogale <i>et al</i> 2004
<i>Ensete ventricosum</i>	Gonindo	Domesticated	Abadura 2017
<i>Ensete ventricosum</i>	Goni-Wassa	Domesticated	Tesfaye and Ludders 2002
<i>Ensete ventricosum</i>	Gonwasa	Domesticated	Alemu and sandford 1991
<i>Ensete ventricosum</i>	Gonwassa	Domesticated	Olango 2014
<i>Ensete ventricosum</i>	Gonwassa	Domesticated	Tsegaye 2002
<i>Ensete ventricosum</i>	Gonwassa	Domesticated	Zengele 2017
<i>Ensete ventricosum</i>	Goria	Domesticated	Alemu and sandford 1991
<i>Ensete ventricosum</i>	Goricho	Domesticated	Assefa and Fitamo 2016
<i>Ensete ventricosum</i>	Goricho	Domesticated	Tesfaye and Ludders 2002
<i>Ensete ventricosum</i>	Gosala	Domesticated	Addis 2005
<i>Ensete ventricosum</i>	Gosala	Domesticated	McKnight report 2014
<i>Ensete ventricosum</i>	Gosallo	Domesticated	Yasuaki 2009
<i>Ensete ventricosum</i>	Gosalo	Domesticated	Assefa and Fitamo 2016
<i>Ensete ventricosum</i>	Gosalo	Domesticated	Tesfaye and Ludders 2002
<i>Ensete ventricosum</i>	Goshendya	Domesticated	Gizachew 2000
<i>Ensete ventricosum</i>	Gosho	Domesticated	Abadura 2017
<i>Ensete ventricosum</i>	Gossalo	Domesticated	Tsegaye 2002
<i>Ensete ventricosum</i>	Gotano	Domesticated	Abadura 2017
<i>Ensete ventricosum</i>	Goticho	Domesticated	Tesfaye and Ludders 2002
<i>Ensete ventricosum</i>	Goticho	Domesticated	Tsegaye 2002
<i>Ensete ventricosum</i>	Gozoda	Domesticated	Nurebo 2017
<i>Ensete ventricosum</i>	Gozoda	Domesticated	Tsegaye 2002
<i>Ensete ventricosum</i>	Gqderia	Domesticated	Alemu and sandford 1991
<i>Ensete ventricosum</i>	Guarit	Domesticated	Addis 2005
<i>Ensete ventricosum</i>	Guariye	Domesticated	Bogale <i>et al</i> 2004
<i>Ensete ventricosum</i>	Guariye	Domesticated	McKnight report 2014
<i>Ensete ventricosum</i>	Guariye	Domesticated	Yemataw 2016
<i>Ensete ventricosum</i>	Guarye	Domesticated	McKnight report 2014
<i>Ensete ventricosum</i>	Guarye	Domesticated	Mojo 2017
<i>Ensete ventricosum</i>	Gubisho	Domesticated	Addis 2005
<i>Ensete ventricosum</i>	Gubo	Domesticated	Garedew 2017
<i>Ensete ventricosum</i>	Gudere	Domesticated	Tsegaye 2002



<i>Ensete ventricosum</i>	Gudereta	Domesticated	Bekele <i>et al</i> 1998
<i>Ensete ventricosum</i>	Gudiro	Domesticated	Garedew 2017
<i>Ensete ventricosum</i>	Gudiro	Domesticated	Abadura 2017
<i>Ensete ventricosum</i>	Guferek	Domesticated	Bogale <i>et al</i> 2004
<i>Ensete ventricosum</i>	Gulemo	Domesticated	McKnight report 2014
<i>Ensete ventricosum</i>	Gulffe	Domesticated	Tabogie 1997
<i>Ensete ventricosum</i>	Guluma	Domesticated	Gizachew 2000
<i>Ensete ventricosum</i>	Gulumo	Domesticated	Addis 2005
<i>Ensete ventricosum</i>	Gulumo	Domesticated	Assefa and Fitamo 2016
<i>Ensete ventricosum</i>	Gulumo	Domesticated	Bogale <i>et al</i> 2004
<i>Ensete ventricosum</i>	Gulumo	Domesticated	McKnight report 2014
<i>Ensete ventricosum</i>	Gulumo	Domesticated	Tesfaye and Ludders 2002
<i>Ensete ventricosum</i>	Gulumo	Domesticated	Tsegaye 2002
<i>Ensete ventricosum</i>	Gulumo	Domesticated	Welde-Michael <i>et al</i> . 2008
<i>Ensete ventricosum</i>	Gulumo	Domesticated	Yasuaki 2009
<i>Ensete ventricosum</i>	Gunfunne	Domesticated	Mojo 2017
<i>Ensete ventricosum</i>	Guniashia	Domesticated	Olango 2014
<i>Ensete ventricosum</i>	Guniashia	Domesticated	Tsegaye 2002
<i>Ensete ventricosum</i>	Guniashia	Domesticated	Zengele 2017
<i>Ensete ventricosum</i>	Gurage	Domesticated	McKnight report 2014
<i>Ensete ventricosum</i>	Guriye	Domesticated	Addis 2005
<i>Ensete ventricosum</i>	Gushero	Domesticated	Addis 2005
<i>Ensete ventricosum</i>	Gushiro	Domesticated	Garedew 2017
<i>Ensete ventricosum</i>	Gushro	Domesticated	Abadura 2017
<i>Ensete ventricosum</i>	Haaho	Domesticated	Assefa and Fitamo 2016
<i>Ensete ventricosum</i>	Hadawa	Domesticated	Alemu and sandford 1991
<i>Ensete ventricosum</i>	Haho	Domesticated	Addis 2005
<i>Ensete ventricosum</i>	Haho	Domesticated	Tesfaye and Ludders 2002
<i>Ensete ventricosum</i>	Haho	Domesticated	Tsegaye 2002
<i>Ensete ventricosum</i>	Haho	Domesticated	Yasuaki 2009
<i>Ensete ventricosum</i>	Haiso	Domesticated	Tesfaye and Ludders 2002
<i>Ensete ventricosum</i>	Haktma	Domesticated	Tesfaye and Ludders 2002
<i>Ensete ventricosum</i>	Hakuchie	Domesticated	Tabogie 1997
<i>Ensete ventricosum</i>	Hala	Domesticated	Addis 2005
<i>Ensete ventricosum</i>	Hala	Domesticated	Tesfaye and Ludders 2002
<i>Ensete ventricosum</i>	Hal-A	Domesticated	Alemu and sandford 1991
<i>Ensete ventricosum</i>	Hala Gena	Domesticated	Addis 2005
<i>Ensete ventricosum</i>	Hala Mezya	Domesticated	Gizachew 2000
<i>Ensete ventricosum</i>	Halaa	Domesticated	Olango 2015
<i>Ensete ventricosum</i>	Halea	Domesticated	Bekele <i>et al</i> 1998
<i>Ensete ventricosum</i>	Halegena	Domesticated	Alemu and sandford 1991
<i>Ensete ventricosum</i>	Haleko	Domesticated	Alemu and sandford 1991
<i>Ensete ventricosum</i>	Haleko	Domesticated	McKnight report 2014
<i>Ensete ventricosum</i>	Haleko	Domesticated	Olango 2015
<i>Ensete ventricosum</i>	Haleko	Domesticated	Yemataw 2016
<i>Ensete ventricosum</i>	Halkebita	Domesticated	Alemu and sandford 1991
<i>Ensete ventricosum</i>	Halla	Domesticated	McKnight report 2014
<i>Ensete ventricosum</i>	Halla	Domesticated	Olango 2014
<i>Ensete ventricosum</i>	Halla	Domesticated	Shumbulo 2012
<i>Ensete ventricosum</i>	Halla	Domesticated	Tsegaye 2002

<i>Ensete ventricosum</i>	Halla	Domesticated	Zengele 2017
<i>Ensete ventricosum</i>	Hamesesa	Domesticated	Tsegaye 2002
<i>Ensete ventricosum</i>	Hansha	Domesticated	Assefa and Fitamo 2016
<i>Ensete ventricosum</i>	Hanzena	Domesticated	Tsegaye 2002
<i>Ensete ventricosum</i>	Harane	Domesticated	Addis 2005
<i>Ensete ventricosum</i>	Harbicho	Domesticated	Tesfaye and Ludders 2002
<i>Ensete ventricosum</i>	Hare	Domesticated	Addis 2005
<i>Ensete ventricosum</i>	Haroboro	Domesticated	Alemu and sandford 1991
<i>Ensete ventricosum</i>	Hassa Edadya	Domesticated	Gizachew 2000
<i>Ensete ventricosum</i>	Hawe	Domesticated	Tesfaye and Ludders 2002
<i>Ensete ventricosum</i>	Hawsakuwa	Domesticated	Olango 2014
<i>Ensete ventricosum</i>	Hawsakuwa	Domesticated	Tsegaye 2002
<i>Ensete ventricosum</i>	Hawsakuwa	Domesticated	Zengele 2017
<i>Ensete ventricosum</i>	Hayisa	Domesticated	Assefa and Fitamo 2016
<i>Ensete ventricosum</i>	Hayiwona	Domesticated	Mulualem 2014
<i>Ensete ventricosum</i>	Hayiwona	Domesticated	Tsegaye 2002
<i>Ensete ventricosum</i>	Heekeche	Domesticated	Assefa and Fitamo 2016
<i>Ensete ventricosum</i>	Heila	Domesticated	Bogale <i>et al</i> 2004
<i>Ensete ventricosum</i>	Heila	Domesticated	Tabogie 1997
<i>Ensete ventricosum</i>	Heila	Domesticated	Welde-Michael et al. 2008
<i>Ensete ventricosum</i>	Hekeche	Domesticated	Tesfaye and Ludders 2002
<i>Ensete ventricosum</i>	Hekeche	Domesticated	Tsegaye 2002
<i>Ensete ventricosum</i>	Hekjtche	Domesticated	Addis 2005
<i>Ensete ventricosum</i>	Helleja	Domesticated	Addis 2005
<i>Ensete ventricosum</i>	Hemcsesa	Domesticated	Tesfaye and Ludders 2002
<i>Ensete ventricosum</i>	Henewa	Domesticated	Mulualem 2014
<i>Ensete ventricosum</i>	Henuwa	Domesticated	Tabogie 1997
<i>Ensete ventricosum</i>	Hicheuie	Domesticated	Addis 2005
<i>Ensete ventricosum</i>	Hichiwi	Domesticated	Abadura 2017
<i>Ensete ventricosum</i>	Hinba	Domesticated	Nurebo 2017
<i>Ensete ventricosum</i>	Hiniba	Domesticated	Chala 2016
<i>Ensete ventricosum</i>	Hiniba	Domesticated	McKnight report 2014
<i>Ensete ventricosum</i>	Hiniba	Domesticated	Tsegaye 2002
<i>Ensete ventricosum</i>	Hiniba	Domesticated	Welde-Michael et al. 2008
<i>Ensete ventricosum</i>	Hiniwa	Domesticated	Chala 2016
<i>Ensete ventricosum</i>	Hinuwa	Domesticated	Nurebo 2017
<i>Ensete ventricosum</i>	Hiywona	Domesticated	Nurebo 2017
<i>Ensete ventricosum</i>	Hodoro	Domesticated	Alemu and sandford 1991
<i>Ensete ventricosum</i>	Hoendya	Domesticated	Gizachew 2000
<i>Ensete ventricosum</i>	Hoeya	Domesticated	Tabogie 1997
<i>Ensete ventricosum</i>	Hoie (Ho-la)	Domesticated	Alemu and sandford 1991
<i>Ensete ventricosum</i>	Hoiya	Domesticated	Olango 2014
<i>Ensete ventricosum</i>	Hoiya	Domesticated	Zengele 2017
<i>Ensete ventricosum</i>	Intada	Domesticated	Shigeta 1990
<i>Ensete ventricosum</i>	Intado	Domesticated	Bogale <i>et al</i> 2004
<i>Ensete ventricosum</i>	Iphalakia	Domesticated	Alemu and sandford 1991
<i>Ensete ventricosum</i>	Itata	Domesticated	Alemu and sandford 1991
<i>Ensete ventricosum</i>	Ivdara	Domesticated	Tesfaye and Ludders 2002
<i>Ensete ventricosum</i>	Jajeriquee	Domesticated	Nurebo 2017
<i>Ensete ventricosum</i>	Janjirro	Domesticated	Bogale <i>et al</i> 2004

<i>Ensete ventricosum</i>	Jegireda	Domesticated	Tsegaye 2002
<i>Ensete ventricosum</i>	Jejeba	Domesticated	Mojo 2017
<i>Ensete ventricosum</i>	Jinka	Domesticated	Bogale <i>et al</i> 2004
<i>Ensete ventricosum</i>	Jlerigie	Domesticated	Alemu and sandford 1991
<i>Ensete ventricosum</i>	Jobro	Domesticated	Addis 2005
<i>Ensete ventricosum</i>	Jolola	Domesticated	Addis 2005
<i>Ensete ventricosum</i>	Joolak	Domesticated	Shigeta 1990
<i>Ensete ventricosum</i>	K	Domesticated	McKnight report 2014
<i>Ensete ventricosum</i>	Ka. Awnoda	Domesticated	Nurebo 2017
<i>Ensete ventricosum</i>	Kabaria	Domesticated	Olango 2014
<i>Ensete ventricosum</i>	Kabaria	Domesticated	Tsegaye 2002
<i>Ensete ventricosum</i>	Kabaria	Domesticated	Zengele 2017
<i>Ensete ventricosum</i>	Kafiacho	Domesticated	Garedew 2017
<i>Ensete ventricosum</i>	Kakie	Domesticated	Addis 2005
<i>Ensete ventricosum</i>	Kaksa	Domesticated	Shigeta 1990
<i>Ensete ventricosum</i>	Kambata	Domesticated	Olango 2014
<i>Ensete ventricosum</i>	Kambata	Domesticated	Zengele 2017
<i>Ensete ventricosum</i>	Kambata-Maziya	Domesticated	Olango 2014
<i>Ensete ventricosum</i>	Kambata-Maziya	Domesticated	Zengele 2017
<i>Ensete ventricosum</i>	Kanbaticha	Domesticated	Tesfaye and Ludders 2002
<i>Ensete ventricosum</i>	Kanche	Domesticated	Addis 2005
<i>Ensete ventricosum</i>	Kancho	Domesticated	Bogale <i>et al</i> 2004
<i>Ensete ventricosum</i>	Kanchwo	Domesticated	Addis 2005
<i>Ensete ventricosum</i>	Kanda	Domesticated	Assefa and Fitamo 2016
<i>Ensete ventricosum</i>	Kanda	Domesticated	Tesfaye and Ludders 2002
<i>Ensete ventricosum</i>	Kanda	Domesticated	Tsegaye 2002
<i>Ensete ventricosum</i>	Kanko	Domesticated	Tesfaye and Ludders 2002
<i>Ensete ventricosum</i>	Kararansho	Domesticated	Tesfaye and Ludders 2002
<i>Ensete ventricosum</i>	Kaseta	Domesticated	Mulualem 2014
<i>Ensete ventricosum</i>	Kaseta	Domesticated	Tsegaye 2002
<i>Ensete ventricosum</i>	Kassiet	Domesticated	Welde-Michael <i>et al</i> . 2008
<i>Ensete ventricosum</i>	Katania	Domesticated	Tsegaye 2002
<i>Ensete ventricosum</i>	Kataniya	Domesticated	Olango 2014
<i>Ensete ventricosum</i>	Kataniya	Domesticated	Shumbulo 2012
<i>Ensete ventricosum</i>	Kataniya	Domesticated	Zengele 2017
<i>Ensete ventricosum</i>	Katano	Domesticated	Abadura 2017
<i>Ensete ventricosum</i>	Kawo	Domesticated	Abadura 2017
<i>Ensete ventricosum</i>	Kcberca	Domesticated	Bekele <i>et al</i> 1998
<i>Ensete ventricosum</i>	Kd. Awnoda	Domesticated	Nurebo 2017
<i>Ensete ventricosum</i>	Keberia	Domesticated	Alemu and sandford 1991
<i>Ensete ventricosum</i>	Keberia	Domesticated	Olango 2015
<i>Ensete ventricosum</i>	Keberia	Domesticated	Tabogie 1997
<i>Ensete ventricosum</i>	Keberichie	Domesticated	Tabogie 1997
<i>Ensete ventricosum</i>	Keberichie	Domesticated	Yemataw <i>et al</i> . 2012
<i>Ensete ventricosum</i>	Keberie	Domesticated	Addis 2005
<i>Ensete ventricosum</i>	Kechi	Domesticated	Abadura 2017
<i>Ensete ventricosum</i>	Keeshe	Domesticated	Assefa and Fitamo 2016
<i>Ensete ventricosum</i>	Kefi	Domesticated	Abadura 2017
<i>Ensete ventricosum</i>	Kefi Bosso	Domesticated	Abadura 2017
<i>Ensete ventricosum</i>	Kefile	Domesticated	Addis 2005

<i>Ensete ventricosum</i>	Kei	Domesticated	Addis 2005
<i>Ensete ventricosum</i>	Keiaskala	Domesticated	Addis 2005
<i>Ensete ventricosum</i>	Kekara	Domesticated	Nurebo 2017
<i>Ensete ventricosum</i>	Kekaro	Domesticated	Abadura 2017
<i>Ensete ventricosum</i>	Kekere	Domesticated	Gizachew 2000
<i>Ensete ventricosum</i>	Kekero	Domesticated	Garedew 2017
<i>Ensete ventricosum</i>	Kekero	Domesticated	Alemu and sandford 1991
<i>Ensete ventricosum</i>	Kekeruwa	Domesticated	Olango 2014
<i>Ensete ventricosum</i>	Kekeruwa	Domesticated	Shumbulo 2012
<i>Ensete ventricosum</i>	Kekeruwa	Domesticated	Tsegaye 2002
<i>Ensete ventricosum</i>	Kekeruwa	Domesticated	Zengele 2017
<i>Ensete ventricosum</i>	Kekerya	Domesticated	Gizachew 2000
<i>Ensete ventricosum</i>	Keltentia	Domesticated	Olango 2015
<i>Ensete ventricosum</i>	Keltentia	Domesticated	Tabogie 1997
<i>Ensete ventricosum</i>	Kembat	Domesticated	Addis 2005
<i>Ensete ventricosum</i>	Kembata	Domesticated	McKnight report 2014
<i>Ensete ventricosum</i>	Kembata	Domesticated	Tabogie 1997
<i>Ensete ventricosum</i>	Kembate	Domesticated	Welde-Michael et al. 2008
<i>Ensete ventricosum</i>	Kembotra	Domesticated	Mulualem 2014
<i>Ensete ventricosum</i>	Kerdia	Domesticated	Alemu and sandford 1991
<i>Ensete ventricosum</i>	Kerese	Domesticated	Bogale <i>et al</i> 2004
<i>Ensete ventricosum</i>	Keresie	Domesticated	Addis 2005
<i>Ensete ventricosum</i>	Kertia	Domesticated	McKnight report 2014
<i>Ensete ventricosum</i>	Keseta	Domesticated	Nurebo 2017
<i>Ensete ventricosum</i>	Keshe/Kire	Domesticated	Tsegaye 2002
<i>Ensete ventricosum</i>	Keshieha	Domesticated	Tesfaye and Ludders 2002
<i>Ensete ventricosum</i>	Kessetie	Domesticated	Tabogie 1997
<i>Ensete ventricosum</i>	Ketano	Domesticated	Garedew 2017
<i>Ensete ventricosum</i>	Ketene	Domesticated	Addis 2005
<i>Ensete ventricosum</i>	Ketene	Domesticated	Alemu and sandford 1991
<i>Ensete ventricosum</i>	Ketene	Domesticated	Bekele <i>et al</i> 1998
<i>Ensete ventricosum</i>	Ketene	Domesticated	Olango 2015
<i>Ensete ventricosum</i>	Ketenia	Domesticated	Olango 2015
<i>Ensete ventricosum</i>	Ketenia	Domesticated	Tabogie 1997
<i>Ensete ventricosum</i>	Keteniya	Domesticated	McKnight report 2014
<i>Ensete ventricosum</i>	Keteniya	Domesticated	Yemataw 2016
<i>Ensete ventricosum</i>	Keter	Domesticated	McKnight report 2014
<i>Ensete ventricosum</i>	Keticho	Domesticated	Yasuaki 2009
<i>Ensete ventricosum</i>	Ketishe(Ketise)	Domesticated	Alemu and sandford 1991
<i>Ensete ventricosum</i>	Kibote	Domesticated	Addis 2005
<i>Ensete ventricosum</i>	Kikiro	Domesticated	Tabogie 1997
<i>Ensete ventricosum</i>	Kinbat	Domesticated	McKnight report 2014
<i>Ensete ventricosum</i>	Kincho	Domesticated	Assefa and Fitamo 2016
<i>Ensete ventricosum</i>	Kincho	Domesticated	Tesfaye and Ludders 2002
<i>Ensete ventricosum</i>	Kincho	Domesticated	Tsegaye 2002
<i>Ensete ventricosum</i>	Kineb	Domesticated	Bogale <i>et al</i> 2004
<i>Ensete ventricosum</i>	Kiniwar	Domesticated	Tsegaye 2002
<i>Ensete ventricosum</i>	Kinkie	Domesticated	Addis 2005
<i>Ensete ventricosum</i>	Kire	Domesticated	Tesfaye and Ludders 2002
<i>Ensete ventricosum</i>	Kirre	Domesticated	Assefa and Fitamo 2016

<i>Ensete ventricosum</i>	Kirro	Domesticated	Alemu and sandford 1991
<i>Ensete ventricosum</i>	Kiticho	Domesticated	Assefa and Fitamo 2016
<i>Ensete ventricosum</i>	Kiticho	Domesticated	McKnight report 2014
<i>Ensete ventricosum</i>	Kiticho	Domesticated	Tesfaye and Ludders 2002
<i>Ensete ventricosum</i>	Kjdcho	Domesticated	Tsegaye 2002
<i>Ensete ventricosum</i>	Kjmna	Domesticated	Addis 2005
<i>Ensete ventricosum</i>	Koberete	Domesticated	Mojo 2017
<i>Ensete ventricosum</i>	Kobire	Domesticated	Addis 2005
<i>Ensete ventricosum</i>	Kocha	Domesticated	Alemu and sandford 1991
<i>Ensete ventricosum</i>	Koche Arkya	Domesticated	Gizachew 2000
<i>Ensete ventricosum</i>	Kokar	Domesticated	Addis 2005
<i>Ensete ventricosum</i>	Koltua	Domesticated	Olango 2014
<i>Ensete ventricosum</i>	Koltua	Domesticated	Zengele 2017
<i>Ensete ventricosum</i>	Kombat	Domesticated	McKnight report 2014
<i>Ensete ventricosum</i>	Kombotira	Domesticated	Nurebo 2017
<i>Ensete ventricosum</i>	Kombotra	Domesticated	Tsegaye 2002
<i>Ensete ventricosum</i>	Kongola	Domesticated	Alemu and sandford 1991
<i>Ensete ventricosum</i>	Kophiri	Domesticated	Abadura 2017
<i>Ensete ventricosum</i>	Kora	Domesticated	Addis 2005
<i>Ensete ventricosum</i>	Korale	Domesticated	Addis 2005
<i>Ensete ventricosum</i>	Korina	Domesticated	Tsegaye 2002
<i>Ensete ventricosum</i>	Korkori	Domesticated	Bogale <i>et al</i> 2004
<i>Ensete ventricosum</i>	Korolia	Domesticated	Alemu and sandford 1991
<i>Ensete ventricosum</i>	Kororia	Domesticated	Alemu and sandford 1991
<i>Ensete ventricosum</i>	Kortie	Domesticated	Tabogie 1997
<i>Ensete ventricosum</i>	Kortso	Domesticated	Alemu and sandford 1991
<i>Ensete ventricosum</i>	Koshe	Domesticated	Addis 2005
<i>Ensete ventricosum</i>	Koshkosha	Domesticated	Addis 2005
<i>Ensete ventricosum</i>	Koshkoshe	Domesticated	Mojo 2017
<i>Ensete ventricosum</i>	Kosya	Domesticated	Gizachew 2000
<i>Ensete ventricosum</i>	Kotecha	Domesticated	McKnight report 2014
<i>Ensete ventricosum</i>	Kuania	Domesticated	Alemu and sandford 1991
<i>Ensete ventricosum</i>	Kuania	Domesticated	Olango 2014
<i>Ensete ventricosum</i>	Kuania	Domesticated	Tabogie 1997
<i>Ensete ventricosum</i>	Kuania	Domesticated	Tsegaye 2002
<i>Ensete ventricosum</i>	Kuania	Domesticated	Zengele 2017
<i>Ensete ventricosum</i>	Kucha	Domesticated	Addis 2005
<i>Ensete ventricosum</i>	Kucha	Domesticated	Bogale <i>et al</i> 2004
<i>Ensete ventricosum</i>	Kucha-Arkie	Domesticated	Olango 2015
<i>Ensete ventricosum</i>	Kucha-Arkie	Domesticated	Tabogie 1997
<i>Ensete ventricosum</i>	Kucha-Arkiya	Domesticated	Olango 2014
<i>Ensete ventricosum</i>	Kucha-Arkiya	Domesticated	Zengele 2017
<i>Ensete ventricosum</i>	Kuchia	Domesticated	Olango 2014
<i>Ensete ventricosum</i>	Kuchia	Domesticated	Tsegaye 2002
<i>Ensete ventricosum</i>	Kuchia	Domesticated	Zengele 2017
<i>Ensete ventricosum</i>	Kuffa	Domesticated	Alemu and sandford 1991
<i>Ensete ventricosum</i>	Kule	Domesticated	Olango 2015
<i>Ensete ventricosum</i>	Kule	Domesticated	Tesfaye and Ludders 2002
<i>Ensete ventricosum</i>	Kule	Domesticated	Tsegaye 2002
<i>Ensete ventricosum</i>	Kulle	Domesticated	Yasuaki 2009

<i>Ensete ventricosum</i>	Kullo	Domesticated	Welde-Michael et al. 2008
<i>Ensete ventricosum</i>	Kuoe	Domesticated	Alemu and sandford 1991
<i>Ensete ventricosum</i>	Kupi	Domesticated	Abadura 2017
<i>Ensete ventricosum</i>	Kuruma	Domesticated	McKnight report 2014
<i>Ensete ventricosum</i>	Kuruwa	Domesticated	McKnight report 2014
<i>Ensete ventricosum</i>	Kuule	Domesticated	Assefa and Fitamo 2016
<i>Ensete ventricosum</i>	Lakendia	Domesticated	Alemu and sandford 1991
<i>Ensete ventricosum</i>	Lalukiya	Domesticated	Olango 2014
<i>Ensete ventricosum</i>	Lalukiya	Domesticated	Zengele 2017
<i>Ensete ventricosum</i>	Lechee	Domesticated	Nurebo 2017
<i>Ensete ventricosum</i>	Leemicho	Domesticated	Assefa and Fitamo 2016
<i>Ensete ventricosum</i>	Lekaka	Domesticated	Bogale <i>et al</i> 2004
<i>Ensete ventricosum</i>	Lekaka	Domesticated	Tabogie 1997
<i>Ensete ventricosum</i>	Lemat	Domesticated	Addis 2005
<i>Ensete ventricosum</i>	Lemat	Domesticated	McKnight report 2014
<i>Ensete ventricosum</i>	Lemat	Domesticated	Mojo 2017
<i>Ensete ventricosum</i>	Lemat	Domesticated	Welde-Michael <i>et al</i> . 2008
<i>Ensete ventricosum</i>	Lembo	Domesticated	Addis 2005
<i>Ensete ventricosum</i>	Lembo	Domesticated	Alemu and sandford 1991
<i>Ensete ventricosum</i>	Lembo	Domesticated	Tabogie 1997
<i>Ensete ventricosum</i>	Lembuwa	Domesticated	Olango 2014
<i>Ensete ventricosum</i>	Lembuwa	Domesticated	Shumbulo 2012
<i>Ensete ventricosum</i>	Lembuwa	Domesticated	Tsegaye 2002
<i>Ensete ventricosum</i>	Lembuwa	Domesticated	Zengele 2017
<i>Ensete ventricosum</i>	Lemicho	Domesticated	Tesfaye and Ludders 2002
<i>Ensete ventricosum</i>	Lemicho	Domesticated	Tsegaye 2002
<i>Ensete ventricosum</i>	Lemicho	Domesticated	Yasuaki 2009
<i>Ensete ventricosum</i>	Lemmbo	Domesticated	Zippel 2005
<i>Ensete ventricosum</i>	Lendere	Domesticated	Nurebo 2017
<i>Ensete ventricosum</i>	Lendwesa	Domesticated	Tsegaye 2002
<i>Ensete ventricosum</i>	Lepalayta	Domesticated	Alemu and sandford 1991
<i>Ensete ventricosum</i>	Leqaqa	Domesticated	McKnight report 2014
<i>Ensete ventricosum</i>	Leqaqa	Domesticated	Yemataw 2016
<i>Ensete ventricosum</i>	Liembo	Domesticated	Olango 2015
<i>Ensete ventricosum</i>	Limato	Domesticated	Addis 2005
<i>Ensete ventricosum</i>	Litso	Domesticated	Bogale <i>et al</i> 2004
<i>Ensete ventricosum</i>	Locha	Domesticated	Olango 2014
<i>Ensete ventricosum</i>	Locha	Domesticated	Olango 2015
<i>Ensete ventricosum</i>	Locha	Domesticated	Tabogie 1997
<i>Ensete ventricosum</i>	Locha	Domesticated	Zengele 2017
<i>Ensete ventricosum</i>	Lochinge	Domesticated	Bekele <i>et al</i> 1998
<i>Ensete ventricosum</i>	Lochinge	Domesticated	McKnight report 2014
<i>Ensete ventricosum</i>	Lochingia	Domesticated	Olango 2014
<i>Ensete ventricosum</i>	Lochingia	Domesticated	Zengele 2017
<i>Ensete ventricosum</i>	Lochingie	Domesticated	Alemu and sandford 1991
<i>Ensete ventricosum</i>	Lochingie	Domesticated	Olango 2015
<i>Ensete ventricosum</i>	Lochingii	Domesticated	Zippel 2005
<i>Ensete ventricosum</i>	Loehingia	Domesticated	Tsegaye 2002
<i>Ensete ventricosum</i>	Lonkisa	Domesticated	Tesfaye and Ludders 2002
<i>Ensete ventricosum</i>	Lo-Offa	Domesticated	Alemu and sandford 1991

<i>Ensete ventricosum</i>	Lota	Domesticated	Alemu and sandford 1991
<i>Ensete ventricosum</i>	Lukanda	Domesticated	Addis 2005
<i>Ensete ventricosum</i>	Maade	Domesticated	Assefa and Fitamo 2016
<i>Ensete ventricosum</i>	Machadami	Domesticated	Garedew 2017
<i>Ensete ventricosum</i>	Machadami	Domesticated	Abadura 2017
<i>Ensete ventricosum</i>	Machedemi	Domesticated	Tsehay and Kebebew 2006
<i>Ensete ventricosum</i>	Made	Domesticated	Tesfaye and Ludders 2002
<i>Ensete ventricosum</i>	Made	Domesticated	Tsegaye 2002
<i>Ensete ventricosum</i>	Magelia	Domesticated	Bekele <i>et al</i> 1998
<i>Ensete ventricosum</i>	Mahia	Domesticated	Alemu and sandford 1991
<i>Ensete ventricosum</i>	Mahia	Domesticated	Olango 2014
<i>Ensete ventricosum</i>	Mahia	Domesticated	Tsegaye 2002
<i>Ensete ventricosum</i>	Mahia	Domesticated	Zengele 2017
<i>Ensete ventricosum</i>	Mai	Domesticated	Bogale <i>et al</i> 2004
<i>Ensete ventricosum</i>	Mala	Domesticated	Alemu and sandford 1991
<i>Ensete ventricosum</i>	Maldea	Domesticated	Tesfaye and Ludders 2002
<i>Ensete ventricosum</i>	Mandaluka	Domesticated	Chala 2016
<i>Ensete ventricosum</i>	Mandulka	Domesticated	Addis 2005
<i>Ensete ventricosum</i>	Mandulka	Domesticated	Alemu and sandford 1991
<i>Ensete ventricosum</i>	Mandulka	Domesticated	Mulualem 2014
<i>Ensete ventricosum</i>	Manduluka	Domesticated	Nurebo 2017
<i>Ensete ventricosum</i>	Manduluka	Domesticated	Tsegaye 2002
<i>Ensete ventricosum</i>	Maratichi	Domesticated	Abadura 2017
<i>Ensete ventricosum</i>	Mariya	Domesticated	Tabogie 1997
<i>Ensete ventricosum</i>	Mariye	Domesticated	Mulualem 2014
<i>Ensete ventricosum</i>	Mariye	Domesticated	Tsegaye 2002
<i>Ensete ventricosum</i>	Masa	Domesticated	Bekele <i>et al</i> 1998
<i>Ensete ventricosum</i>	Masa-Maziya	Domesticated	Olango 2014
<i>Ensete ventricosum</i>	Masa-Maziya	Domesticated	Zengele 2017
<i>Ensete ventricosum</i>	Mashangi	Domesticated	Abadura 2017
<i>Ensete ventricosum</i>	Mashasha	Domesticated	Gizachew 2000
<i>Ensete ventricosum</i>	Masmasa	Domesticated	Olango 2014
<i>Ensete ventricosum</i>	Masmasa	Domesticated	Tsegaye 2002
<i>Ensete ventricosum</i>	Masmasa	Domesticated	Zengele 2017
<i>Ensete ventricosum</i>	Matako	Domesticated	Abadura 2017
<i>Ensete ventricosum</i>	Matia	Domesticated	Alemu and sandford 1991
<i>Ensete ventricosum</i>	Matia	Domesticated	Tsegaye 2002
<i>Ensete ventricosum</i>	Matia	Domesticated	Zengele 2017
<i>Ensete ventricosum</i>	Matiya	Domesticated	McKnight report 2014
<i>Ensete ventricosum</i>	Matiya	Domesticated	Olango 2014
<i>Ensete ventricosum</i>	Matiya	Domesticated	Yemataw 2016
<i>Ensete ventricosum</i>	Matiya	Domesticated	Zengele 2017
<i>Ensete ventricosum</i>	Mattie	Domesticated	Olango 2015
<i>Ensete ventricosum</i>	Mattie	Domesticated	Tabogie 1997
<i>Ensete ventricosum</i>	Mazia	Domesticated	McKnight report 2014
<i>Ensete ventricosum</i>	Mazia	Domesticated	Olango 2015
<i>Ensete ventricosum</i>	Mazia	Domesticated	Tabogie 1997
<i>Ensete ventricosum</i>	Mazia	Domesticated	Tsegaye 2002
<i>Ensete ventricosum</i>	Mazia	Domesticated	Zengele 2017
<i>Ensete ventricosum</i>	Maziya	Domesticated	McKnight report 2014

<i>Ensete ventricosum</i>	Maziya	Domesticated	Olango 2014
<i>Ensete ventricosum</i>	Maziya	Domesticated	Shumbulo 2012
<i>Ensete ventricosum</i>	Maziya	Domesticated	Zengele 2017
<i>Ensete ventricosum</i>	Mazziia	Domesticated	Zippel 2005
<i>Ensete ventricosum</i>	Mecha Boza	Domesticated	McKnight report 2014
<i>Ensete ventricosum</i>	Mecha Shododinya	Domesticated	Gizachew 2000
<i>Ensete ventricosum</i>	Medde	Domesticated	Olango 2015
<i>Ensete ventricosum</i>	Medicha	Domesticated	Addis 2005
<i>Ensete ventricosum</i>	Medie	Domesticated	Addis 2005
<i>Ensete ventricosum</i>	Medlcha	Domesticated	Addis 2005
<i>Ensete ventricosum</i>	Megrib	Domesticated	Tabogie 1997
<i>Ensete ventricosum</i>	Mekelesa	Domesticated	Tsegaye 2002
<i>Ensete ventricosum</i>	Mekelwesa	Domesticated	Nurebo 2017
<i>Ensete ventricosum</i>	Meleket	Domesticated	Tsegaye 2002
<i>Ensete ventricosum</i>	Melekete	Domesticated	Tesfaye and Ludders 2002
<i>Ensete ventricosum</i>	Mello	Domesticated	Alemu and sandford 1991
<i>Ensete ventricosum</i>	Melo	Domesticated	Bogale <i>et al</i> 2004
<i>Ensete ventricosum</i>	Memo	Domesticated	Tsegaye 2002
<i>Ensete ventricosum</i>	Menere	Domesticated	Nurebo 2017
<i>Ensete ventricosum</i>	Mentwesho	Domesticated	Tesfaye and Ludders 2002
<i>Ensete ventricosum</i>	Mergo	Domesticated	Addis 2005
<i>Ensete ventricosum</i>	Mergu	Domesticated	Bogale <i>et al</i> 2004
<i>Ensete ventricosum</i>	Merjia	Domesticated	Mulualem 2014
<i>Ensete ventricosum</i>	Merza	Domesticated	Addis 2005
<i>Ensete ventricosum</i>	Merza	Domesticated	Bogale <i>et al</i> 2004
<i>Ensete ventricosum</i>	Merza	Domesticated	McKnight report 2014
<i>Ensete ventricosum</i>	Merza	Domesticated	Mulualem 2014
<i>Ensete ventricosum</i>	Merza	Domesticated	Nurebo 2017
<i>Ensete ventricosum</i>	Merza	Domesticated	Tsegaye 2002
<i>Ensete ventricosum</i>	Merze	Domesticated	McKnight report 2014
<i>Ensete ventricosum</i>	Mesengo	Domesticated	Addis 2005
<i>Ensete ventricosum</i>	Meshengi	Domesticated	Garedew 2017
<i>Ensete ventricosum</i>	Mesmesa	Domesticated	Tabogie 1997
<i>Ensete ventricosum</i>	Mesmesicho	Domesticated	Mulualem 2014
<i>Ensete ventricosum</i>	Mesmesicho	Domesticated	Nurebo 2017
<i>Ensete ventricosum</i>	Mesmesicho	Domesticated	Tsegaye 2002
<i>Ensete ventricosum</i>	Mesmesuwa	Domesticated	Alemu and sandford 1991
<i>Ensete ventricosum</i>	Meso	Domesticated	Garedew 2017
<i>Ensete ventricosum</i>	Messa	Domesticated	Alemu and sandford 1991
<i>Ensete ventricosum</i>	Messa	Domesticated	Olango 2014
<i>Ensete ventricosum</i>	Messa	Domesticated	Zengele 2017
<i>Ensete ventricosum</i>	Messo	Domesticated	Abadura 2017
<i>Ensete ventricosum</i>	Metinea	Domesticated	Alemu and sandford 1991
<i>Ensete ventricosum</i>	Meya-Wesho	Domesticated	Tesfaye and Ludders 2002
<i>Ensete ventricosum</i>	Mezia	Domesticated	Alemu and sandford 1991
<i>Ensete ventricosum</i>	Meziya	Domesticated	Chala 2016
<i>Ensete ventricosum</i>	Mezya	Domesticated	Gizachew 2000
<i>Ensete ventricosum</i>	Mezya	Domesticated	Welde-Michael et al. 2008
<i>Ensete ventricosum</i>	Mezyia	Domesticated	Addis 2005
<i>Ensete ventricosum</i>	Micho	Domesticated	Tesfaye and Ludders 2002



<i>Ensete ventricosum</i>	Micho	Domesticated	Tsegaye 2002
<i>Ensete ventricosum</i>	Micho	Domesticated	Yasuaki 2009
<i>Ensete ventricosum</i>	Midasho	Domesticated	Assefa and Fitamo 2016
<i>Ensete ventricosum</i>	Midasho	Domesticated	Bogale <i>et al</i> 2004
<i>Ensete ventricosum</i>	Midasho	Domesticated	McKnight report 2014
<i>Ensete ventricosum</i>	Midasho	Domesticated	Tesfaye and Ludders 2002
<i>Ensete ventricosum</i>	Midasho	Domesticated	Tsegaye 2002
<i>Ensete ventricosum</i>	Midasho	Domesticated	Yasuaki 2009
<i>Ensete ventricosum</i>	Midasho	Domesticated	Addis 2005
<i>Ensete ventricosum</i>	Mindiraro	Domesticated	Addis 2005
<i>Ensete ventricosum</i>	Minus	Domesticated	Addis 2005
<i>Ensete ventricosum</i>	Mishera	Domesticated	Addis 2005
<i>Ensete ventricosum</i>	Misir	Domesticated	Bogale <i>et al</i> 2004
<i>Ensete ventricosum</i>	Moche	Domesticated	Addis 2005
<i>Ensete ventricosum</i>	Moche	Domesticated	Tsegaye 2002
<i>Ensete ventricosum</i>	Moche(Mochia)	Domesticated	Alemu and sandford 1991
<i>Ensete ventricosum</i>	Moche'E	Domesticated	Nurebo 2017
<i>Ensete ventricosum</i>	Mochia	Domesticated	Tsegaye 2002
<i>Ensete ventricosum</i>	Mochia Shamaruwa	Domesticated	Zengele 2017
<i>Ensete ventricosum</i>	Mochie	Domesticated	Olango 2015
<i>Ensete ventricosum</i>	Mochie	Domesticated	Tabogie 1997
<i>Ensete ventricosum</i>	Mochiya	Domesticated	Olango 2014
<i>Ensete ventricosum</i>	Mochiya	Domesticated	Zengele 2017
<i>Ensete ventricosum</i>	Molagna	Domesticated	Tsegaye 2002
<i>Ensete ventricosum</i>	Molge	Domesticated	Bogale <i>et al</i> 2004
<i>Ensete ventricosum</i>	Mooset	Domesticated	Shigeta 1990
<i>Ensete ventricosum</i>	Mossie	Domesticated	Alemu and sandford 1991
<i>Ensete ventricosum</i>	Mula-La	Domesticated	Alemu and sandford 1991
<i>Ensete ventricosum</i>	Munderaro	Domesticated	McKnight report 2014
<i>Ensete ventricosum</i>	Mundirara	Domesticated	Yasuaki 2009
<i>Ensete ventricosum</i>	Mundiraro	Domesticated	Assefa and Fitamo 2016
<i>Ensete ventricosum</i>	Mundraro	Domesticated	Tesfaye and Ludders 2002
<i>Ensete ventricosum</i>	Mundurare	Domesticated	Tsegaye 2002
<i>Ensete ventricosum</i>	Mushawessa	Domesticated	Nurebo 2017
<i>Ensete ventricosum</i>	Musula	Domesticated	McKnight report 2014
<i>Ensete ventricosum</i>	Musula	Domesticated	Yemataw 2016
<i>Ensete ventricosum</i>	Muxuxi	Domesticated	Mojo 2017
<i>Ensete ventricosum</i>	Muzi	Domesticated	Addis 2005
<i>Ensete ventricosum</i>	Nakaka	Domesticated	Alemu and sandford 1991
<i>Ensete ventricosum</i>	Nakaka	Domesticated	Olango 2014
<i>Ensete ventricosum</i>	Nakaka	Domesticated	Shumbulo 2012
<i>Ensete ventricosum</i>	Nakaka	Domesticated	Tsegaye 2002
<i>Ensete ventricosum</i>	Nakaka	Domesticated	Zengele 2017
<i>Ensete ventricosum</i>	Nakaka Silkantia	Domesticated	Zengele 2017
<i>Ensete ventricosum</i>	Nech	Domesticated	Addis 2005
<i>Ensete ventricosum</i>	Nech Boso	Domesticated	Abadura 2017
<i>Ensete ventricosum</i>	Nechiwe	Domesticated	Mojo 2017
<i>Ensete ventricosum</i>	Necho	Domesticated	Tsegaye 2002
<i>Ensete ventricosum</i>	Nechoa	Domesticated	Bogale <i>et al</i> 2004
<i>Ensete ventricosum</i>	Nechwe	Domesticated	Addis 2005

<i>Ensete ventricosum</i>	Nechwe	Domesticated	McKnight report 2014
<i>Ensete ventricosum</i>	Nechwe	Domesticated	Welde-Michael et al. 2008
<i>Ensete ventricosum</i>	Nefo	Domesticated	McKnight report 2014
<i>Ensete ventricosum</i>	Nefo	Domesticated	Tsegaye 2002
<i>Ensete ventricosum</i>	Nejebura	Domesticated	Alemu and sandford 1991
<i>Ensete ventricosum</i>	Nekaka	Domesticated	Addis 2005
<i>Ensete ventricosum</i>	Nekaka	Domesticated	Bekele <i>et al</i> 1998
<i>Ensete ventricosum</i>	Nekaka	Domesticated	Gizachew 2000
<i>Ensete ventricosum</i>	Nekaka	Domesticated	Olango 2015
<i>Ensete ventricosum</i>	Neqaqa	Domesticated	McKnight report 2014
<i>Ensete ventricosum</i>	Neqaqa	Domesticated	Yemataw 2016
<i>Ensete ventricosum</i>	Neqaqa	Domesticated	Yemataw 2016
<i>Ensete ventricosum</i>	Nerim	Domesticated	McKnight report 2014
<i>Ensete ventricosum</i>	Nerzia	Domesticated	Addis 2005
<i>Ensete ventricosum</i>	Neteu	Domesticated	Addis 2005
<i>Ensete ventricosum</i>	Niffo	Domesticated	McKnight report 2014
<i>Ensete ventricosum</i>	Nifo	Domesticated	Addis 2005
<i>Ensete ventricosum</i>	Nifo	Domesticated	McKnight report 2014
<i>Ensete ventricosum</i>	Nifo	Domesticated	Yasuaki 2009
<i>Ensete ventricosum</i>	Nipho	Domesticated	Bogale <i>et al</i> 2004
<i>Ensete ventricosum</i>	Nobo	Domesticated	Garedew 2017
<i>Ensete ventricosum</i>	Nobo	Domesticated	Abadura 2017
<i>Ensete ventricosum</i>	Nobo	Domesticated	Addis 2005
<i>Ensete ventricosum</i>	Nobo	Domesticated	Bogale <i>et al</i> 2004
<i>Ensete ventricosum</i>	Nobo	Domesticated	Mulualem 2014
<i>Ensete ventricosum</i>	Nofo	Domesticated	Addis 2005
<i>Ensete ventricosum</i>	Odode	Domesticated	Addis 2005
<i>Ensete ventricosum</i>	Officho	Domesticated	Tsehaye and Kebebew 2006
<i>Ensete ventricosum</i>	Ogio	Domesticated	Abadura 2017
<i>Ensete ventricosum</i>	Ogisso	Domesticated	Abadura 2017
<i>Ensete ventricosum</i>	Oha	Domesticated	Alemu and sandford 1991
<i>Ensete ventricosum</i>	Okecha	Domesticated	Alemu and sandford 1991
<i>Ensete ventricosum</i>	Okeshia	Domesticated	Alemu and sandford 1991
<i>Ensete ventricosum</i>	Omi	Domesticated	Garedew 2017
<i>Ensete ventricosum</i>	Omi	Domesticated	Abadura 2017
<i>Ensete ventricosum</i>	Omi Yeko	Domesticated	Abadura 2017
<i>Ensete ventricosum</i>	Onia	Domesticated	Tabogie 1997
<i>Ensete ventricosum</i>	Oniya	Domesticated	Addis 2005
<i>Ensete ventricosum</i>	Oniya	Domesticated	Mulualem 2014
<i>Ensete ventricosum</i>	Oniya	Domesticated	Nurebo 2017
<i>Ensete ventricosum</i>	Oniya	Domesticated	Tsegaye 2002
<i>Ensete ventricosum</i>	Onjamo	Domesticated	Addis 2005
<i>Ensete ventricosum</i>	Onjamo	Domesticated	Tabogie 1997
<i>Ensete ventricosum</i>	Onsa	Domesticated	Gizachew 2000
<i>Ensete ventricosum</i>	Onsessa	Domesticated	Tsegaye 2002
<i>Ensete ventricosum</i>	Oodu	Domesticated	Addis 2005
<i>Ensete ventricosum</i>	Oorisho	Domesticated	Addis 2005
<i>Ensete ventricosum</i>	Oork	Domesticated	Addis 2005
<i>Ensete ventricosum</i>	Oosade	Domesticated	Shigeta 1990
<i>Ensete ventricosum</i>	Oosgurzuwa	Domesticated	Alemu and sandford 1991

<i>Ensete ventricosum</i>	Ootoes	Domesticated	Addis 2005
<i>Ensete ventricosum</i>	Oowisho	Domesticated	Addis 2005
<i>Ensete ventricosum</i>	Oqo	Domesticated	Abadura 2017
<i>Ensete ventricosum</i>	Orada	Domesticated	Nurebo 2017
<i>Ensete ventricosum</i>	Orada	Domesticated	Tsegaye 2002
<i>Ensete ventricosum</i>	Oreda	Domesticated	Addis 2005
<i>Ensete ventricosum</i>	Orgao	Domesticated	Alemu and sandford 1991
<i>Ensete ventricosum</i>	Oso-Gurzo	Domesticated	Olango 2014
<i>Ensete ventricosum</i>	Oso-Gurzo	Domesticated	Tabogie 1997
<i>Ensete ventricosum</i>	Oso-Gurzo	Domesticated	Zengele 2017
<i>Ensete ventricosum</i>	Owret	Domesticated	Mojo 2017
<i>Ensete ventricosum</i>	Pecho	Domesticated	Garedew 2017
<i>Ensete ventricosum</i>	Pecho	Domesticated	Abadura 2017
<i>Ensete ventricosum</i>	Pellua(Phello)	Domesticated	Alemu and sandford 1991
<i>Ensete ventricosum</i>	Peluwa	Domesticated	Olango 2014
<i>Ensete ventricosum</i>	Peluwa	Domesticated	Shumbulo 2012
<i>Ensete ventricosum</i>	Peluwa	Domesticated	Tsegaye 2002
<i>Ensete ventricosum</i>	Peluwa	Domesticated	Zengele 2017
<i>Ensete ventricosum</i>	Pena	Domesticated	Alemu and sandford 1991
<i>Ensete ventricosum</i>	Pena	Domesticated	Olango 2014
<i>Ensete ventricosum</i>	Pena	Domesticated	Tabogie 1997
<i>Ensete ventricosum</i>	Pena	Domesticated	Tsegaye 2002
<i>Ensete ventricosum</i>	Pena	Domesticated	Zengele 2017
<i>Ensete ventricosum</i>	Pera	Domesticated	Alemu and sandford 1991
<i>Ensete ventricosum</i>	Pheluwa	Domesticated	Alemu and sandford 1991
<i>Ensete ventricosum</i>	Phosho	Domesticated	Alemu and sandford 1991
<i>Ensete ventricosum</i>	Phushua	Domesticated	Alemu and sandford 1991
<i>Ensete ventricosum</i>	Pihle	Domesticated	Addis 2005
<i>Ensete ventricosum</i>	Pokuwa	Domesticated	Olango 2014
<i>Ensete ventricosum</i>	Pokuwa	Domesticated	Olango 2015
<i>Ensete ventricosum</i>	Pokuwa	Domesticated	Zengele 2017
<i>Ensete ventricosum</i>	Posha	Domesticated	Olango 2014
<i>Ensete ventricosum</i>	Posha	Domesticated	Zengele 2017
<i>Ensete ventricosum</i>	Posho	Domesticated	Tabogie 1997
<i>Ensete ventricosum</i>	Puki	Domesticated	Abadura 2017
<i>Ensete ventricosum</i>	Pungara	Domesticated	Alemu and sandford 1991
<i>Ensete ventricosum</i>	Puressa	Domesticated	Alemu and sandford 1991
<i>Ensete ventricosum</i>	Qanchiwe	Domesticated	Mojo 2017
<i>Ensete ventricosum</i>	Qashqeshiya	Domesticated	Nurebo 2017
<i>Ensete ventricosum</i>	Qawo	Domesticated	Garedew 2017
<i>Ensete ventricosum</i>	Qebo	Domesticated	Abadura 2017
<i>Ensete ventricosum</i>	Qeqele	Domesticated	McKnight report 2014
<i>Ensete ventricosum</i>	Qeshe	Domesticated	Yasuaki 2009
<i>Ensete ventricosum</i>	Qeshicha	Domesticated	Yasuaki 2009
<i>Ensete ventricosum</i>	Qibinar	Domesticated	Mojo 2017
<i>Ensete ventricosum</i>	Qibnar	Domesticated	McKnight report 2014
<i>Ensete ventricosum</i>	Qibnar	Domesticated	Yemataw 2016
<i>Ensete ventricosum</i>	Qiniwara	Domesticated	Nurebo 2017
<i>Ensete ventricosum</i>	Qoyina	Domesticated	McKnight report 2014
<i>Ensete ventricosum</i>	Qoyina	Domesticated	Yemataw 2016

<i>Ensete ventricosum</i>	Quina	Domesticated	Nurebo 2017
<i>Ensete ventricosum</i>	Rcho	Domesticated	McKnight report 2014
<i>Ensete ventricosum</i>	Rentya	Domesticated	Gizachew 2000
<i>Ensete ventricosum</i>	Sabora	Domesticated	Addis 2005
<i>Ensete ventricosum</i>	Sabora	Domesticated	McKnight report 2014
<i>Ensete ventricosum</i>	Saja	Domesticated	Mojo 2017
<i>Ensete ventricosum</i>	Salmale	Domesticated	Tesfaye and Ludders 2002
<i>Ensete ventricosum</i>	Salta	Domesticated	Shigeta 1990
<i>Ensete ventricosum</i>	Sanka	Domesticated	Gizachew 2000
<i>Ensete ventricosum</i>	Sanka	Domesticated	Olango 2014
<i>Ensete ventricosum</i>	Sanka	Domesticated	Olango 2015
<i>Ensete ventricosum</i>	Sanka	Domesticated	Tabogie 1997
<i>Ensete ventricosum</i>	Sanka	Domesticated	Tsegaye 2002
<i>Ensete ventricosum</i>	Sanka	Domesticated	Zengele 2017
<i>Ensete ventricosum</i>	Sanke	Domesticated	Addis 2005
<i>Ensete ventricosum</i>	Sapara	Domesticated	Bogale <i>et al</i> 2004
<i>Ensete ventricosum</i>	Sapara	Domesticated	McKnight report 2014
<i>Ensete ventricosum</i>	Sapara	Domesticated	Mulualem 2014
<i>Ensete ventricosum</i>	Sapara	Domesticated	Tsegaye 2002
<i>Ensete ventricosum</i>	Saranna	Domesticated	Tsegaye 2002
<i>Ensete ventricosum</i>	Sassa	Domesticated	Olango 2014
<i>Ensete ventricosum</i>	Sassa	Domesticated	Zengele 2017
<i>Ensete ventricosum</i>	Sebara	Domesticated	Mojo 2017
<i>Ensete ventricosum</i>	Sebera	Domesticated	Addis 2005
<i>Ensete ventricosum</i>	Sebera	Domesticated	McKnight report 2014
<i>Ensete ventricosum</i>	Sebera	Domesticated	Yemataw 2016
<i>Ensete ventricosum</i>	Sediramo	Domesticated	Tesfaye and Ludders 2002
<i>Ensete ventricosum</i>	Semwa	Domesticated	Bogale <i>et al</i> 2004
<i>Ensete ventricosum</i>	Senka	Domesticated	Alemu and sandford 1991
<i>Ensete ventricosum</i>	Separa	Domesticated	Addis 2005
<i>Ensete ventricosum</i>	Separa	Domesticated	Nurebo 2017
<i>Ensete ventricosum</i>	Separa	Domesticated	Olango 2014
<i>Ensete ventricosum</i>	Separa	Domesticated	Tsegaye 2002
<i>Ensete ventricosum</i>	Separa	Domesticated	Zengele 2017
<i>Ensete ventricosum</i>	Serana .	Domesticated	Tesfaye and Ludders 2002
<i>Ensete ventricosum</i>	Serarie	Domesticated	Addis 2005
<i>Ensete ventricosum</i>	Serena	Domesticated	Welde-Michael <i>et al</i> . 2008
<i>Ensete ventricosum</i>	Sesa	Domesticated	Olango 2015
<i>Ensete ventricosum</i>	Sesekela	Domesticated	McKnight report 2014
<i>Ensete ventricosum</i>	Seskela	Domesticated	McKnight report 2014
<i>Ensete ventricosum</i>	Sessa	Domesticated	Alemu and sandford 1991
<i>Ensete ventricosum</i>	Sessa	Domesticated	Tabogie 1997
<i>Ensete ventricosum</i>	Sete	Domesticated	Addis 2005
<i>Ensete ventricosum</i>	Shagna	Domesticated	Addis 2005
<i>Ensete ventricosum</i>	Shalako	Domesticated	Abadura 2017
<i>Ensete ventricosum</i>	Shalakumi	Domesticated	Zengele 2017
<i>Ensete ventricosum</i>	Shalakumia	Domesticated	Tsegaye 2002
<i>Ensete ventricosum</i>	Shalakumiya	Domesticated	Olango 2014
<i>Ensete ventricosum</i>	Shalakumiya	Domesticated	Zengele 2017
<i>Ensete ventricosum</i>	Shalda	Domesticated	Olango 2015

<i>Ensete ventricosum</i>	Shalli	Domesticated	Abadura 2017
<i>Ensete ventricosum</i>	Shamaruwa	Domesticated	Olango 2014
<i>Ensete ventricosum</i>	Shamaruwa	Domesticated	Tsegaye 2002
<i>Ensete ventricosum</i>	Shamaruwa	Domesticated	Zengele 2017
<i>Ensete ventricosum</i>	Sharite	Domesticated	Tesfaye and Ludders 2002
<i>Ensete ventricosum</i>	Sharte	Domesticated	Yasuaki 2009
<i>Ensete ventricosum</i>	Shasha	Domesticated	Gizachew 2000
<i>Ensete ventricosum</i>	Shasha	Domesticated	McKnight report 2014
<i>Ensete ventricosum</i>	Shatadena	Domesticated	Nurebo 2017
<i>Ensete ventricosum</i>	Shate	Domesticated	Mulualem 2014
<i>Ensete ventricosum</i>	Shate	Domesticated	Nurebo 2017
<i>Ensete ventricosum</i>	Shate	Domesticated	Tsegaye 2002
<i>Ensete ventricosum</i>	Shawachacho	Domesticated	Tesfaye and Ludders 2002
<i>Ensete ventricosum</i>	Shawe(Icha)	Domesticated	Tesfaye and Ludders 2002
<i>Ensete ventricosum</i>	Shedodiniya	Domesticated	Olango 2014
<i>Ensete ventricosum</i>	Shedodiniya	Domesticated	Zengele 2017
<i>Ensete ventricosum</i>	Sheelekuummiia	Domesticated	Zippel 2005
<i>Ensete ventricosum</i>	Shehi	Domesticated	Garedew 2017
<i>Ensete ventricosum</i>	Shehi	Domesticated	Abadura 2017
<i>Ensete ventricosum</i>	Sheilicho	Domesticated	Tesfaye and Ludders 2002
<i>Ensete ventricosum</i>	Shekesha	Domesticated	Tesfaye and Ludders 2002
<i>Ensete ventricosum</i>	Shelekume	Domesticated	Addis 2005
<i>Ensete ventricosum</i>	Shelekumia	Domesticated	Alemu and sandford 1991
<i>Ensete ventricosum</i>	Shelekumia	Domesticated	Olango 2015
<i>Ensete ventricosum</i>	Shelekumya	Domesticated	Gizachew 2000
<i>Ensete ventricosum</i>	Sheleqe	Domesticated	McKnight report 2014
<i>Ensete ventricosum</i>	Sheleqe/Shelequmia	Domesticated	McKnight report 2014
<i>Ensete ventricosum</i>	Shelequmia	Domesticated	McKnight report 2014
<i>Ensete ventricosum</i>	Shelequmia	Domesticated	Yemataw 2016
<i>Ensete ventricosum</i>	Shemeroy	Domesticated	Tabogie 1997
<i>Ensete ventricosum</i>	Shena	Domesticated	Addis 2005
<i>Ensete ventricosum</i>	Shenguwa	Domesticated	Alemu and sandford 1991
<i>Ensete ventricosum</i>	Shengya	Domesticated	Gizachew 2000
<i>Ensete ventricosum</i>	Sherafera	Domesticated	Tsegaye 2002
<i>Ensete ventricosum</i>	Sherte	Domesticated	Addis 2005
<i>Ensete ventricosum</i>	Shertie	Domesticated	Addis 2005
<i>Ensete ventricosum</i>	Shetadena	Domesticated	McKnight report 2014
<i>Ensete ventricosum</i>	Shetaten	Domesticated	Nurebo 2017
<i>Ensete ventricosum</i>	Shete	Domesticated	Addis 2005
<i>Ensete ventricosum</i>	Shewite	Domesticated	Tsegaye 2002
<i>Ensete ventricosum</i>	Shewrad	Domesticated	Tsegaye 2002
<i>Ensete ventricosum</i>	Shibr	Domesticated	Olango 2015
<i>Ensete ventricosum</i>	Shichi	Domesticated	Abadura 2017
<i>Ensete ventricosum</i>	Shido	Domesticated	Garedew 2017
<i>Ensete ventricosum</i>	Shimmo	Domesticated	Abadura 2017
<i>Ensete ventricosum</i>	Shimo	Domesticated	Garedew 2017
<i>Ensete ventricosum</i>	Shimo	Domesticated	Addis 2005
<i>Ensete ventricosum</i>	Shirafira	Domesticated	Nurebo 2017
<i>Ensete ventricosum</i>	Shiri	Domesticated	Abadura 2017
<i>Ensete ventricosum</i>	Shirira	Domesticated	Yasuaki 2009

<i>Ensete ventricosum</i>	Shirteye	Domesticated	McKnight report 2014
<i>Ensete ventricosum</i>	Shisho	Domesticated	Garedew 2017
<i>Ensete ventricosum</i>	Shisho	Domesticated	Abadura 2017
<i>Ensete ventricosum</i>	Shiwo	Domesticated	Abadura 2017
<i>Ensete ventricosum</i>	Shodedina	Domesticated	Tabogie 1997
<i>Ensete ventricosum</i>	Shodedine	Domesticated	McKnight report 2014
<i>Ensete ventricosum</i>	Shodedinia	Domesticated	Alemu and sandford 1991
<i>Ensete ventricosum</i>	Shodode	Domesticated	Bogale <i>et al</i> 2004
<i>Ensete ventricosum</i>	Shododina	Domesticated	Gizachew 2000
<i>Ensete ventricosum</i>	Shododinia	Domesticated	McKnight report 2014
<i>Ensete ventricosum</i>	Shonbo	Domesticated	Tesfaye and Ludders 2002
<i>Ensete ventricosum</i>	Shondi	Domesticated	Abadura 2017
<i>Ensete ventricosum</i>	Shuchafe-Godariya	Domesticated	Olango 2014
<i>Ensete ventricosum</i>	Shuchafe-Godariya	Domesticated	Zengele 2017
<i>Ensete ventricosum</i>	Shuchafiya	Domesticated	Olango 2014
<i>Ensete ventricosum</i>	Shuchafiya	Domesticated	Shumbulo 2012
<i>Ensete ventricosum</i>	Shuchafiya	Domesticated	Zengele 2017
<i>Ensete ventricosum</i>	Shuchefia	Domesticated	Alemu and sandford 1991
<i>Ensete ventricosum</i>	Shuki	Domesticated	Garedew 2017
<i>Ensete ventricosum</i>	Shuki	Domesticated	Abadura 2017
<i>Ensete ventricosum</i>	Shul Boso	Domesticated	Abadura 2017
<i>Ensete ventricosum</i>	Shundi	Domesticated	Garedew 2017
<i>Ensete ventricosum</i>	Shupalak	Domesticated	Shigeta 1990
<i>Ensete ventricosum</i>	Shuri	Domesticated	Garedew 2017
<i>Ensete ventricosum</i>	Shuri	Domesticated	Abadura 2017
<i>Ensete ventricosum</i>	Shutatya	Domesticated	Gizachew 2000
<i>Ensete ventricosum</i>	Sidama	Domesticated	Addis 2005
<i>Ensete ventricosum</i>	Sidama	Domesticated	McKnight report 2014
<i>Ensete ventricosum</i>	Sidanchi-Ado	Domesticated	Assefa and Fitamo 2016
<i>Ensete ventricosum</i>	Sigezasarum	Domesticated	Welde-Michael et al. 2008
<i>Ensete ventricosum</i>	Signore	Domesticated	McKnight report 2014
<i>Ensete ventricosum</i>	Sikubai	Domesticated	Bogale <i>et al</i> 2004
<i>Ensete ventricosum</i>	Silikentie	Domesticated	Olango 2015
<i>Ensete ventricosum</i>	Silkante	Domesticated	Addis 2005
<i>Ensete ventricosum</i>	Silkantia	Domesticated	Alemu and sandford 1991
<i>Ensete ventricosum</i>	Silkantia	Domesticated	Tsegaye 2002
<i>Ensete ventricosum</i>	Silkentie	Domesticated	Tabogie 1997
<i>Ensete ventricosum</i>	Silqantia	Domesticated	McKnight report 2014
<i>Ensete ventricosum</i>	Silqantia	Domesticated	Yemataw 2016
<i>Ensete ventricosum</i>	Silqantiya	Domesticated	Olango 2014
<i>Ensete ventricosum</i>	Silqantiya	Domesticated	Zengele 2017
<i>Ensete ventricosum</i>	Siltite	Domesticated	Tsegaye 2002
<i>Ensete ventricosum</i>	Siniota	Domesticated	Alemu and sandford 1991
<i>Ensete ventricosum</i>	Sinkatia	Domesticated	Alemu and sandford 1991
<i>Ensete ventricosum</i>	Sinniwe	Domesticated	Mojo 2017
<i>Ensete ventricosum</i>	Sirara	Domesticated	Addis 2005
<i>Ensete ventricosum</i>	Sirare	Domesticated	Bekele <i>et al</i> 1998
<i>Ensete ventricosum</i>	Sirarea	Domesticated	Tsegaye 2002
<i>Ensete ventricosum</i>	Sirarea	Domesticated	Zengele 2017
<i>Ensete ventricosum</i>	Sirareia	Domesticated	McKnight report 2014

<i>Ensete ventricosum</i>	Sirareia	Domesticated	Yemataw 2016
<i>Ensete ventricosum</i>	Siraria	Domesticated	Alemu and sandford 1991
<i>Ensete ventricosum</i>	Siraria	Domesticated	Olango 2014
<i>Ensete ventricosum</i>	Siraria	Domesticated	Zengele 2017
<i>Ensete ventricosum</i>	Sireri	Domesticated	Addis 2005
<i>Ensete ventricosum</i>	Siricho	Domesticated	Assefa and Fitamo 2016
<i>Ensete ventricosum</i>	Siricho	Domesticated	Tesfaye and Ludders 2002
<i>Ensete ventricosum</i>	Siriro	Domesticated	Assefa and Fitamo 2016
<i>Ensete ventricosum</i>	Siriro	Domesticated	Tesfaye and Ludders 2002
<i>Ensete ventricosum</i>	Siriro	Domesticated	Tsegaye 2002
<i>Ensete ventricosum</i>	Sirrara	Domesticated	Gizachew 2000
<i>Ensete ventricosum</i>	Siskel	Domesticated	Bogale <i>et al</i> 2004
<i>Ensete ventricosum</i>	Siskela	Domesticated	Addis 2005
<i>Ensete ventricosum</i>	Siskela	Domesticated	Alemu and sandford 1991
<i>Ensete ventricosum</i>	Siskela	Domesticated	Mulualem 2014
<i>Ensete ventricosum</i>	Siskela	Domesticated	Olango 2014
<i>Ensete ventricosum</i>	Siskela	Domesticated	Tsegaye 2002
<i>Ensete ventricosum</i>	Siskela	Domesticated	Tsegaye 2002
<i>Ensete ventricosum</i>	Siskela	Domesticated	Zengele 2017
<i>Ensete ventricosum</i>	Siskella	Domesticated	McKnight report 2014
<i>Ensete ventricosum</i>	Siskella	Domesticated	Nurebo 2017
<i>Ensete ventricosum</i>	Siskelle	Domesticated	Tabogie 1997
<i>Ensete ventricosum</i>	Siyuti	Domesticated	Olango 2015
<i>Ensete ventricosum</i>	Sokide	Domesticated	Welde-Michael et al. 2008
<i>Ensete ventricosum</i>	Sokido	Domesticated	Nurebo 2017
<i>Ensete ventricosum</i>	Sokido	Domesticated	Tsegaye 2002
<i>Ensete ventricosum</i>	Sopee	Domesticated	Alemu and sandford 1991
<i>Ensete ventricosum</i>	Sorgie	Domesticated	Alemu and sandford 1991
<i>Ensete ventricosum</i>	Sorgiya	Domesticated	Olango 2014
<i>Ensete ventricosum</i>	Sorgiya	Domesticated	Shumbulo 2012
<i>Ensete ventricosum</i>	Sorgiya	Domesticated	Zengele 2017
<i>Ensete ventricosum</i>	Sormanicho	Domesticated	Mulualem 2014
<i>Ensete ventricosum</i>	Sormanicho	Domesticated	Tsegaye 2002
<i>Ensete ventricosum</i>	Sorpie	Domesticated	Chala 2016
<i>Ensete ventricosum</i>	Sorpie	Domesticated	Welde-Michael <i>et al</i> . 2008
<i>Ensete ventricosum</i>	Subera	Domesticated	Alemu and sandford 1991
<i>Ensete ventricosum</i>	Suiitia	Domesticated	Zippel 2005
<i>Ensete ventricosum</i>	Suite	Domesticated	Bekele <i>et al</i> 1998
<i>Ensete ventricosum</i>	Suitee	Domesticated	Addis 2005
<i>Ensete ventricosum</i>	Suitia	Domesticated	Olango 2014
<i>Ensete ventricosum</i>	Suitia	Domesticated	Tsegaye 2002
<i>Ensete ventricosum</i>	Suitia	Domesticated	Zengele 2017
<i>Ensete ventricosum</i>	Sumeka	Domesticated	Tsegaye 2002
<i>Ensete ventricosum</i>	Sutya	Domesticated	Gizachew 2000
<i>Ensete ventricosum</i>	Sweetia	Domesticated	Alemu and sandford 1991
<i>Ensete ventricosum</i>	Swetiya	Domesticated	McKnight report 2014
<i>Ensete ventricosum</i>	Switea	Domesticated	McKnight report 2014
<i>Ensete ventricosum</i>	Switea	Domesticated	Yemataw 2016
<i>Ensete ventricosum</i>	Switeia	Domesticated	McKnight report 2014
<i>Ensete ventricosum</i>	Switeia	Domesticated	Yemataw 2016

<i>Ensete ventricosum</i>	Tabute	Domesticated	Nurebo 2017
<i>Ensete ventricosum</i>	Tafaro	Domesticated	Abadura 2017
<i>Ensete ventricosum</i>	Tagacha	Domesticated	Olango 2014
<i>Ensete ventricosum</i>	Tagacha	Domesticated	Tsegaye 2002
<i>Ensete ventricosum</i>	Tagacha	Domesticated	Zengele 2017
<i>Ensete ventricosum</i>	Tao	Domesticated	Garedew 2017
<i>Ensete ventricosum</i>	Tao	Domesticated	Abadura 2017
<i>Ensete ventricosum</i>	Tasuwa	Domesticated	Alemu and sandford 1991
<i>Ensete ventricosum</i>	Tato	Domesticated	Abadura 2017
<i>Ensete ventricosum</i>	Tayo	Domesticated	Tsehay and Kebebew 2006
<i>Ensete ventricosum</i>	Tebere	Domesticated	Bogale <i>et al</i> 2004
<i>Ensete ventricosum</i>	Tebuta	Domesticated	Mulualem 2014
<i>Ensete ventricosum</i>	Tebute	Domesticated	Tsegaye 2002
<i>Ensete ventricosum</i>	Tebutie	Domesticated	Tabogie 1997
<i>Ensete ventricosum</i>	Tefeno	Domesticated	Abadura 2017
<i>Ensete ventricosum</i>	Tefero	Domesticated	Garedew 2017
<i>Ensete ventricosum</i>	Tegadada	Domesticated	Nurebo 2017
<i>Ensete ventricosum</i>	Tegaded	Domesticated	Addis 2005
<i>Ensete ventricosum</i>	Tegaded	Domesticated	Tsegaye 2002
<i>Ensete ventricosum</i>	Tegeded	Domesticated	McKnight report 2014
<i>Ensete ventricosum</i>	Tei	Domesticated	Abadura 2017
<i>Ensete ventricosum</i>	Teigo	Domesticated	Tsegaye 2002
<i>Ensete ventricosum</i>	Tela	Domesticated	Alemu and sandford 1991
<i>Ensete ventricosum</i>	Tena	Domesticated	Gizachew 2000
<i>Ensete ventricosum</i>	Tenako	Domesticated	McKnight report 2014
<i>Ensete ventricosum</i>	Tenna	Domesticated	Olango 2014
<i>Ensete ventricosum</i>	Tenna	Domesticated	Tsegaye 2002
<i>Ensete ventricosum</i>	Tenna	Domesticated	Zengele 2017
<i>Ensete ventricosum</i>	Teriye	Domesticated	McKnight report 2014
<i>Ensete ventricosum</i>	Terota	Domesticated	Alemu and sandford 1991
<i>Ensete ventricosum</i>	Tersenkie	Domesticated	Tabogie 1997
<i>Ensete ventricosum</i>	Terta	Domesticated	Alemu and sandford 1991
<i>Ensete ventricosum</i>	Tesa	Domesticated	McKnight report 2014
<i>Ensete ventricosum</i>	Teserkia	Domesticated	Alemu and sandford 1991
<i>Ensete ventricosum</i>	Tessa	Domesticated	McKnight report 2014
<i>Ensete ventricosum</i>	Tessa	Domesticated	Tsegaye 2002
<i>Ensete ventricosum</i>	Tessa	Domesticated	Yemataw 2016
<i>Ensete ventricosum</i>	Teyo	Domesticated	Garedew 2017
<i>Ensete ventricosum</i>	Tibia	Domesticated	Bogale <i>et al</i> 2004
<i>Ensete ventricosum</i>	Tida	Domesticated	Alemu and sandford 1991
<i>Ensete ventricosum</i>	Tik	Domesticated	McKnight report 2014
<i>Ensete ventricosum</i>	Tishamati	Domesticated	Abadura 2017
<i>Ensete ventricosum</i>	Tituwa	Domesticated	Tabogie 1997
<i>Ensete ventricosum</i>	Tokocha	Domesticated	Tesfaye and Ludders 2002
<i>Ensete ventricosum</i>	Topacho	Domesticated	Abadura 2017
<i>Ensete ventricosum</i>	Topocho	Domesticated	Garedew 2017
<i>Ensete ventricosum</i>	Torabe	Domesticated	Addis 2005
<i>Ensete ventricosum</i>	Torabe	Domesticated	Bogale <i>et al</i> 2004
<i>Ensete ventricosum</i>	Toracho	Domesticated	Addis 2005
<i>Ensete ventricosum</i>	Toracho	Domesticated	McKnight report 2014



<i>Ensete ventricosum</i>	Torora	Domesticated	Assefa and Fitamo 2016
<i>Ensete ventricosum</i>	Torora	Domesticated	Mulualem 2014
<i>Ensete ventricosum</i>	Torora	Domesticated	Tesfaye and Ludders 2002
<i>Ensete ventricosum</i>	Torora	Domesticated	Tsegaye 2002
<i>Ensete ventricosum</i>	Torore/Toracho	Domesticated	McKnight report 2014
<i>Ensete ventricosum</i>	Tororet	Domesticated	Addis 2005
<i>Ensete ventricosum</i>	Trey	Domesticated	Gizachew 2000
<i>Ensete ventricosum</i>	Tsala	Domesticated	Shigeta 1990
<i>Ensete ventricosum</i>	Tsela	Domesticated	Gizachew 2000
<i>Ensete ventricosum</i>	Tsela	Domesticated	McKnight report 2014
<i>Ensete ventricosum</i>	Tsella	Domesticated	McKnight report 2014
<i>Ensete ventricosum</i>	Tsewessa	Domesticated	Alemu and sandford 1991
<i>Ensete ventricosum</i>	Tsitnatc	Domesticated	Alemu and sandford 1991
<i>Ensete ventricosum</i>	Tsorsign	Domesticated	Addis 2005
<i>Ensete ventricosum</i>	Ttizotna	Domesticated	Bekele <i>et al</i> 1998
<i>Ensete ventricosum</i>	Tufa	Domesticated	Olango 2015
<i>Ensete ventricosum</i>	Tufa	Domesticated	Tabogie 1997
<i>Ensete ventricosum</i>	Tuffa	Domesticated	Alemu and sandford 1991
<i>Ensete ventricosum</i>	Tuffa	Domesticated	McKnight report 2014
<i>Ensete ventricosum</i>	Tuffa	Domesticated	Olango 2014
<i>Ensete ventricosum</i>	Tuffa	Domesticated	Yemataw 2016
<i>Ensete ventricosum</i>	Tuffa	Domesticated	Zengele 2017
<i>Ensete ventricosum</i>	Tufla	Domesticated	Bekele <i>et al</i> 1998
<i>Ensete ventricosum</i>	Tunako	Domesticated	Tesfaye and Ludders 2002
<i>Ensete ventricosum</i>	Tunnako	Domesticated	Assefa and Fitamo 2016
<i>Ensete ventricosum</i>	Turur	Domesticated	Addis 2005
<i>Ensete ventricosum</i>	Tuti	Domesticated	Garedew 2017
<i>Ensete ventricosum</i>	Tutti	Domesticated	Abadura 2017
<i>Ensete ventricosum</i>	Tuzmia	Domesticated	McKnight report 2014
<i>Ensete ventricosum</i>	Tuzuma	Domesticated	Addis 2005
<i>Ensete ventricosum</i>	Tuzuma	Domesticated	Alemu and sandford 1991
<i>Ensete ventricosum</i>	Tuzuma	Domesticated	Bogale <i>et al</i> 2004
<i>Ensete ventricosum</i>	Tuzuma	Domesticated	Gizachew 2000
<i>Ensete ventricosum</i>	Tuzuma	Domesticated	McKnight report 2014
<i>Ensete ventricosum</i>	Tuzuma	Domesticated	Olango 2014
<i>Ensete ventricosum</i>	Tuzuma	Domesticated	Olango 2015
<i>Ensete ventricosum</i>	Tuzuma	Domesticated	Shumbulo 2012
<i>Ensete ventricosum</i>	Tuzuma	Domesticated	Tabogie 1997
<i>Ensete ventricosum</i>	Tuzuma	Domesticated	Tsegaye 2002
<i>Ensete ventricosum</i>	Tuzuma	Domesticated	Zengele 2017
<i>Ensete ventricosum</i>	Ungame	Domesticated	Bogale <i>et al</i> 2004
<i>Ensete ventricosum</i>	Unjam	Domesticated	Addis 2005
<i>Ensete ventricosum</i>	Unjama	Domesticated	Mulualem 2014
<i>Ensete ventricosum</i>	Unjama	Domesticated	Tsegaye 2002
<i>Ensete ventricosum</i>	Unjame	Domesticated	McKnight report 2014
<i>Ensete ventricosum</i>	Unjema	Domesticated	Nurebo 2017
<i>Ensete ventricosum</i>	Ur Badadiet	Domesticated	McKnight report 2014
<i>Ensete ventricosum</i>	Urkurza	Domesticated	Addis 2005
<i>Ensete ventricosum</i>	Uskruz	Domesticated	Tsegaye 2002
<i>Ensete ventricosum</i>	Uskurusa	Domesticated	Nurebo 2017

<i>Ensete ventricosum</i>	Utero	Domesticated	Bogale <i>et al</i> 2004
<i>Ensete ventricosum</i>	Utula	Domesticated	Gizachew 2000
<i>Ensete ventricosum</i>	Uuwisho	Domesticated	Assefa and Fitamo 2016
<i>Ensete ventricosum</i>	Uwa	Domesticated	McKnight report 2014
<i>Ensete ventricosum</i>	Uwesho	Domesticated	Tsegaye 2002
<i>Ensete ventricosum</i>	Uwisho	Domesticated	McKnight report 2014
<i>Ensete ventricosum</i>	Uwisho	Domesticated	Tesfaye and Ludders 2002
<i>Ensete ventricosum</i>	Uwisho	Domesticated	Yasuaki 2009
<i>Ensete ventricosum</i>	Wago	Domesticated	Garedew 2017
<i>Ensete ventricosum</i>	Wagu	Domesticated	Addis 2005
<i>Ensete ventricosum</i>	Walantiche	Domesticated	Yemataw <i>et al.</i> 2012
<i>Ensete ventricosum</i>	Wanadia	Domesticated	McKnight report 2014
<i>Ensete ventricosum</i>	Wanadia	Domesticated	Olango 2015
<i>Ensete ventricosum</i>	Wanadia	Domesticated	Tsegaye 2002
<i>Ensete ventricosum</i>	Wanadia	Domesticated	Zengele 2017
<i>Ensete ventricosum</i>	Wanadie	Domesticated	Tabogie 1997
<i>Ensete ventricosum</i>	Wanadiyia	Domesticated	Olango 2014
<i>Ensete ventricosum</i>	Wanadiyia	Domesticated	Zengele 2017
<i>Ensete ventricosum</i>	Wanadyla	Domesticated	Addis 2005
<i>Ensete ventricosum</i>	Wanakeberia	Domesticated	Bekele <i>et al</i> 1998
<i>Ensete ventricosum</i>	Wandia	Domesticated	Alemu and sandford 1991
<i>Ensete ventricosum</i>	Wango	Domesticated	Garedew 2017
<i>Ensete ventricosum</i>	Wango	Domesticated	Abadura 2017
<i>Ensete ventricosum</i>	Wango	Domesticated	Addis 2005
<i>Ensete ventricosum</i>	Wanikore	Domesticated	Assefa and Fitamo 2016
<i>Ensete ventricosum</i>	Wanikore	Domesticated	Tesfaye and Ludders 2002
<i>Ensete ventricosum</i>	Wanikore	Domesticated	Tsegaye 2002
<i>Ensete ventricosum</i>	Wani-Vvasu	Domesticated	Tesfaye and Ludders 2002
<i>Ensete ventricosum</i>	Wannidiia	Domesticated	Zippel 2005
<i>Ensete ventricosum</i>	Weianticha	Domesticated	Tesfaye and Ludders 2002
<i>Ensete ventricosum</i>	Weina	Domesticated	Tabogie 1997
<i>Ensete ventricosum</i>	Weka	Domesticated	Welde-Michael et al. 2008
<i>Ensete ventricosum</i>	Wermikalo	Domesticated	Tesfaye and Ludders 2002
<i>Ensete ventricosum</i>	Weshmeda	Domesticated	Tabogie 1997
<i>Ensete ventricosum</i>	Wocereda	Domesticated	Nurebo 2017
<i>Ensete ventricosum</i>	Wohiya	Domesticated	Alemu and sandford 1991
<i>Ensete ventricosum</i>	Woisha	Domesticated	Olango 2014
<i>Ensete ventricosum</i>	Woisha	Domesticated	Tabogie 1997
<i>Ensete ventricosum</i>	Woisha	Domesticated	Zengele 2017
<i>Ensete ventricosum</i>	Wolamu Astara	Domesticated	Mojo 2017
<i>Ensete ventricosum</i>	Wolanche	Domesticated	Addis 2005
<i>Ensete ventricosum</i>	Wolayita	Domesticated	McKnight report 2014
<i>Ensete ventricosum</i>	Wolegela	Domesticated	Alemu and sandford 1991
<i>Ensete ventricosum</i>	Wolenchia	Domesticated	Alemu and sandford 1991
<i>Ensete ventricosum</i>	Wollanchie	Domesticated	Tabogie 1997
<i>Ensete ventricosum</i>	Wonadye	Domesticated	Mojo 2017
<i>Ensete ventricosum</i>	Wondie	Domesticated	Addis 2005
<i>Ensete ventricosum</i>	Wonigoro	Domesticated	Welde-Michael et al. 2008
<i>Ensete ventricosum</i>	Wonkorit	Domesticated	Addis 2005
<i>Ensete ventricosum</i>	Wonshe	Domesticated	Gizachew 2000

<i>Ensete ventricosum</i>	Woodaro	Domesticated	Assefa and Fitamo 2016
<i>Ensete ventricosum</i>	Wordes	Domesticated	Tsegaye 2002
<i>Ensete ventricosum</i>	Woret	Domesticated	Mojo 2017
<i>Ensete ventricosum</i>	Woretie	Domesticated	Addis 2005
<i>Ensete ventricosum</i>	Workidille	Domesticated	Addis 2005
<i>Ensete ventricosum</i>	Woshamada	Domesticated	Mulualem 2014
<i>Ensete ventricosum</i>	Woshamaja	Domesticated	Tsegaye 2002
<i>Ensete ventricosum</i>	Woshameda	Domesticated	Nurebo 2017
<i>Ensete ventricosum</i>	Woshemeda	Domesticated	Addis 2005
<i>Ensete ventricosum</i>	Woshemela	Domesticated	Tsegaye 2002
<i>Ensete ventricosum</i>	Wossa-Aife	Domesticated	Alemu and sandford 1991
<i>Ensete ventricosum</i>	Wouviro	Domesticated	Addis 2005
<i>Ensete ventricosum</i>	Woysha	Domesticated	Shumbulo 2012
<i>Ensete ventricosum</i>	Wubisha	Domesticated	Addis 2005
<i>Ensete ventricosum</i>	Wubisho	Domesticated	Tsegaye 2002
<i>Ensete ventricosum</i>	Wuiro	Domesticated	Addis 2005
<i>Ensete ventricosum</i>	Wundiraro	Domesticated	McKnight report 2014
<i>Ensete ventricosum</i>	Wura Bereg	Domesticated	Addis 2005
<i>Ensete ventricosum</i>	Wutiro	Domesticated	Addis 2005
<i>Ensete ventricosum</i>	Xhori	Domesticated	Bogale <i>et al</i> 2004
<i>Ensete ventricosum</i>	Xorora	Domesticated	Nurebo 2017
<i>Ensete ventricosum</i>	Yafi Bosso	Domesticated	Abadura 2017
<i>Ensete ventricosum</i>	Yahoo	Domesticated	Garedew 2017
<i>Ensete ventricosum</i>	Yaka	Domesticated	McKnight report 2014
<i>Ensete ventricosum</i>	Yako	Domesticated	Addis 2005
<i>Ensete ventricosum</i>	Yamerate	Domesticated	Addis 2005
<i>Ensete ventricosum</i>	Yamie	Domesticated	Alemu and sandford 1991
<i>Ensete ventricosum</i>	Yebo	Domesticated	Garedew 2017
<i>Ensete ventricosum</i>	Yebo	Domesticated	Abadura 2017
<i>Ensete ventricosum</i>	Yedi	Domesticated	Bogale <i>et al</i> 2004
<i>Ensete ventricosum</i>	Yegendiye	Domesticated	Yemataw <i>et al.</i> 2012
<i>Ensete ventricosum</i>	Yegondye	Domesticated	Mojo 2017
<i>Ensete ventricosum</i>	Yeka	Domesticated	McKnight report 2014
<i>Ensete ventricosum</i>	Yekeswo	Domesticated	Addis 2005
<i>Ensete ventricosum</i>	Yekimech	Domesticated	Yemataw <i>et al.</i> 2012
<i>Ensete ventricosum</i>	Yeko	Domesticated	Garedew 2017
<i>Ensete ventricosum</i>	Yeko	Domesticated	Abadura 2017
<i>Ensete ventricosum</i>	Yeqebero Enset	Domesticated	Mojo 2017
<i>Ensete ventricosum</i>	Yeqesiwe	Domesticated	Mojo 2017
<i>Ensete ventricosum</i>	Yereo	Domesticated	Abadura 2017
<i>Ensete ventricosum</i>	Yesha Mazea	Domesticated	McKnight report 2014
<i>Ensete ventricosum</i>	Yesha Maziya	Domesticated	McKnight report 2014
<i>Ensete ventricosum</i>	Yesha Mezya	Domesticated	Gizachew 2000
<i>Ensete ventricosum</i>	Yeshirafire	Domesticated	Mojo 2017
<i>Ensete ventricosum</i>	Yeshirafre	Domesticated	Welde-Michael <i>et al.</i> 2008
<i>Ensete ventricosum</i>	Yeshirakinke	Domesticated	McKnight report 2014
<i>Ensete ventricosum</i>	Yeshiraqinqe	Domesticated	Mojo 2017
<i>Ensete ventricosum</i>	Yeto	Domesticated	Garedew 2017
<i>Ensete ventricosum</i>	Yeto	Domesticated	Abadura 2017
<i>Ensete ventricosum</i>	Yilga	Domesticated	Gizachew 2000

<i>Ensete ventricosum</i>	Yiregiye	Domesticated	Addis 2005
<i>Ensete ventricosum</i>	Yiregye	Domesticated	Mojo 2017
<i>Ensete ventricosum</i>	Yirio	Domesticated	Garedew 2017
<i>Ensete ventricosum</i>	Yobo	Domesticated	Garedew 2017
<i>Ensete ventricosum</i>	Yobo	Domesticated	Abadura 2017
<i>Ensete ventricosum</i>	Yogo	Domesticated	Abadura 2017
<i>Ensete ventricosum</i>	Yore	Domesticated	Bogale <i>et al</i> 2004
<i>Ensete ventricosum</i>	Yore	Domesticated	Gizachew 2000
<i>Ensete ventricosum</i>	Yoria	Domesticated	Alemu and sandford 1991
<i>Ensete ventricosum</i>	Yoro	Domesticated	Garedew 2017
<i>Ensete ventricosum</i>	Yoro	Domesticated	Abadura 2017
<i>Ensete ventricosum</i>	Yoto	Domesticated	Garedew 2017
<i>Ensete ventricosum</i>	Yoto	Domesticated	Abadura 2017
<i>Ensete ventricosum</i>	Zegez	Domesticated	McKnight report 2014
<i>Ensete ventricosum</i>	Zegeziwe	Domesticated	Mojo 2017
<i>Ensete ventricosum</i>	Zera Mezya	Domesticated	Gizachew 2000
<i>Ensete ventricosum</i>	Zerana	Domesticated	Tesfaye and Ludders 2002
<i>Ensete ventricosum</i>	Zerate	Domesticated	Chala 2016
<i>Ensete ventricosum</i>	Zereto	Domesticated	Addis 2005
<i>Ensete ventricosum</i>	Zergesa	Domesticated	Gizachew 2000
<i>Ensete ventricosum</i>	Zeriye	Domesticated	Tabogie 1997
<i>Ensete ventricosum</i>	Zinka	Domesticated	McKnight report 2014
<i>Ensete ventricosum</i>	Zinka	Domesticated	Shigeta 1990
<i>Ensete ventricosum</i>	Zinka	Domesticated	Yemataw 2016
<i>Ensete ventricosum</i>	Zinkate	Domesticated	Alemu and sandford 1991
<i>Ensete ventricosum</i>	Zinke	Domesticated	Addis 2005
<i>Ensete ventricosum</i>	Zinke	Domesticated	Bekele <i>et al</i> 1998
<i>Ensete ventricosum</i>	Zinke	Domesticated	Bogale <i>et al</i> 2004
<i>Ensete ventricosum</i>	Zinkia	Domesticated	Alemu and sandford 1991
<i>Ensete ventricosum</i>	Zinkia	Domesticated	Olango 2015
<i>Ensete ventricosum</i>	Zinkia	Domesticated	Tsegaye 2002
<i>Ensete ventricosum</i>	Zinkia	Domesticated	Zengele 2017
<i>Ensete ventricosum</i>	Zinkie	Domesticated	Tabogie 1997
<i>Ensete ventricosum</i>	Zinkiya	Domesticated	Olango 2014
<i>Ensete ventricosum</i>	Zinkiya	Domesticated	Zengele 2017
<i>Ensete ventricosum</i>	Zobir	Domesticated	Mojo 2017
<i>Ensete ventricosum</i>	Zobira	Domesticated	McKnight report 2014
<i>Ensete ventricosum</i>	Zobira	Domesticated	Nurebo 2017
<i>Ensete ventricosum</i>	Zobiro	Domesticated	Addis 2005
<i>Ensete ventricosum</i>	Zobra	Domesticated	Mulualem 2014
<i>Ensete ventricosum</i>	Zobra	Domesticated	Tabogie 1997
<i>Ensete ventricosum</i>	Zobra	Domesticated	Tsegaye 2002
<i>Ensete ventricosum</i>	Zutuma	Domesticated	Alemu and sandford 1991

---

ple literature.