

# Waist-hip ratio and Mortality in Heart Failure

Koen W. Streng, MD<sup>1</sup>; Adriaan A. Voors, MD, PhD<sup>1</sup>; Hans L. Hillege, MD, PhD<sup>1</sup>; Stefan D. Anker, MD, PhD<sup>2</sup>; John G. Cleland, MD, PhD<sup>3</sup>; Kenneth Dickstein, MD, PhD<sup>4,5</sup>; Gerasimos Filippatos, MD, PhD<sup>6</sup>; Marco Metra, MD<sup>7</sup>; Leong L. Ng, MD<sup>8</sup>; Piotr Ponikowski, MD, PhD<sup>9</sup>; Niles J. Samani, MD<sup>8</sup>; Dirk J. van Veldhuisen, MD, PhD<sup>1</sup>; Aeilko H. Zwinderman, PhD<sup>10</sup>; Faiez Zannad, MD<sup>11</sup>; Kevin Damman, MD, PhD<sup>1</sup>; Peter van der Meer, MD, PhD<sup>1</sup>; Chim C. Lang, MD<sup>12</sup>

<sup>1</sup> University of Groningen, Department of Cardiology, University Medical Center Groningen, Groningen, the Netherlands

<sup>2</sup> Division of Cardiology and Metabolism; Department of Cardiology (CVK); and Berlin-Brandenburg Center for Regenerative Therapies (BCRT); German Centre for Cardiovascular Research (DZHK) partner site Berlin; Charité Universitätsmedizin Berlin, Germany

<sup>3</sup> National Heart and Lung Institute, Imperial College London and Robertson Centre for Biostatistics and Clinical Trials, University of Glasgow, Glasgow, UK

<sup>4</sup> University of Bergen, Bergen, Norway

<sup>5</sup> Stavanger University Hospital, Stavanger, Norway

<sup>6</sup> National and Kapodistrian University of Athens, School of Medicine, Department of Cardiology, Heart Failure Unit, Athens University Hospital Attikon, Athens, Greece

<sup>7</sup> Institute of Cardiology, Department of Medical and Surgical Specialties, Radiological Sciences and Public Health, University of Brescia, Italy

<sup>8</sup> Department of Cardiovascular Sciences, University of Leicester, Glenfield Hospital, and NIHR Leicester Biomedical Research Centre, Glenfield Hospital, Leicester, LE3 9QP, UK

<sup>9</sup> Department of Heart Diseases, Wrocław Medical University, Poland and Cardiology Department, Military Hospital, Wrocław, Poland

<sup>10</sup> Department of Epidemiology, Biostatistics and Bioinformatics, Academic Medical Centre, Amsterdam, the Netherlands

<sup>11</sup> Inserm CIC 1433, Université de Lorraine, CHU de Nancy, Nancy, France

<sup>12</sup> School of Medicine Centre for Cardiovascular and Lung Biology, Division of Medical Sciences, University of Dundee, Ninewells Hospital & Medical School, Dundee, UK

## Corresponding author:

Prof. Dr. A.A. Voors

Department of Cardiology

University Medical Center Groningen

Hanzeplein 1, 9713 GZ, Groningen, the Netherlands

Tel: +31 (0)50 3612355

Fax: +31 (0)50 3618062

Email: a.a.voors@umcg.nl

**Word count: 3077**

## ABSTRACT

**Aims:** A higher body mass index (BMI) is associated with better survival in heart failure (HF) patients, also known as the obesity paradox. However, BMI does not account for body composition. We therefore analysed the association between abdominal fat, measured via waist-hip ratio (WHR), BMI and all-cause mortality in patients with HF.

**Methods:** For this analysis 1738 patients from The Scottish BIOlogy Study to Tailored Treatment in Chronic Heart Failure (BIOSAT-CHF) validation study were included. Patients without waist and hip measurements were excluded. WHR was defined as waist circumference/hip circumference, divided into tertiles and split for sex. A linear regression of principal components from an extensive panel of biomarkers was performed to provide insight in the pathophysiology behind a higher WHR.

**Results:** In total, 1479 patients were included, of which 33% were female and mean age was  $75 \pm 11$  years. A higher WHR was independently associated with a higher BMI, a higher prevalence of diabetes and higher functional NYHA class. There was a significant interaction between sex and WHR on its association with mortality ( $P < 0.001$ ). In women, a higher WHR was associated with a higher mortality risk (HR 2.01; 95% confidence interval (CI) 1.33-3.02,  $P = 0.001$ ), whereas no significant association was found in men (HR 1.21, 95% CI 0.87-1.69,  $P = 0.262$ ). We found a strong association between a higher WHR and elevated markers of inflammation and MAPK cascade in women, while in men these associations were less profound.

**Conclusions:** A higher WHR was associated with a higher risk of death in female, but not in male HF patients. These findings challenge the obesity paradox, and suggest that fat deposition is pathophysiologically harmful and may be a target for therapy in female patients with HF.

**Keywords:** heart failure, obesity, waist-hip ratio, body mass index, mortality

## INTRODUCTION

Obesity a risk factor for the development of heart failure (HF), but in patients with established HF a higher body mass index (BMI) is associated with a lower risk of death.(1-4) This so-called obesity paradox describes improved survival rates in HF patients, with a BMI between 25-35 kg/m<sup>2</sup> compared with normal or underweight HF patients. Although this paradox has been widely described, the precise mechanisms behind this paradox are not well understood. The most commonly used measurement to define obesity is BMI. However, patients with a high BMI might be misclassified as HF due to dyspnoea, and BMI fails to account for body composition, including fat distribution and fluid in the third space. Specifically, BMI may neglect the effects of abdominal fat, which has been identified as a potential risk factor in the onset of HF and is known to be associated with mortality in the general population.(5-7) Abdominal fat is better reflected by measuring waist to hip ratio (WHR). However, nothing is known about the association between WHR and clinical outcome in patients with established HF. We therefore examined the association between abdominal fat, measured via WHR, BMI and all-cause mortality.

## **METHODS**

### **Study population**

For the current analysis, we used data from BIOSTAT-CHF (A systems BIOlogy Study to Tailored Treatment in Chronic Heart Failure). BIOSTAT-CHF is a multicentre, prospective observational study.(8-10) For this study, the BIOSTAT-CHF cohort from Scotland was used, since only in this cohort WHR was routinely measured (n=1738). Main inclusion criteria were documented HF and patients had to be treated with at least 20mg furosemide or equivalent per day and were anticipated to be up titrated with ACE inhibitors/ARBs and/or beta-blockers. The complete list of inclusion and exclusion criteria has been previously published elsewhere.(8) The study complied with the Declaration of Helsinki, local ethics committee has approved the research protocol and all patients signed informed consent . WHR was calculated as waist circumference (WC) divided by hip circumference (HC). WC and hip circumference (HC) were measured according to the World Health Organization (WHO) recommendations. The subject was asked to stand relaxed with arms at the sides, feet positioned close together and weight evenly distributed across feet. WC was measured midway between the lowest rib and the superior border of iliac crest. HC was measured at the level of widest portion of buttocks (trochanters). All measurements were in centimetres (cm) to the nearest 0.1 cm. Body mass index was calculated as weight in kilograms (kg) divided by squared length in meters (m). Obesity based on both BMI ( $\geq 30$  kg/m<sup>2</sup>) and WHR (for men  $\geq 0.90$ , for women  $\geq 0.85$ ) was defined according to the World Health Organisation guidelines. Patients were divided into sex specific tertiles of WHR, since fat metabolism and deposition differs with sex. HF with reduced ejection fraction was defined as an left ventricular ejection fraction (LVEF) <40%, HF with mid-range ejection fraction as a LVEF between 40 and 50% and HF with preserved ejection fraction as a LVEF equal or above 50%, according to the most recent ESC HF guidelines.(11)

### **Laboratory analysis**

Additional analyses were performed using a high-throughput technique using the Olink Proseek® Multiplex INF I96 96 kit, which measures 92 selected cardiovascular-related proteins simultaneously

in 1µl plasma samples.(12) The amplicons are subsequently quantified using a Fluidigm BioMark™ HD real-time PCR platform. The platform provides normalized protein expression (NPX) data where a high protein value corresponds to a high protein concentration, but not an absolute quantification. These proteins were divided by Olink into thirteen domains; Inflammation, Catabolic process, Angiogenesis/blood vessel morphogenesis, Cell adhesion, Chemotaxis, Coagulation, mitogen-activated protein kinase (MAPK) cascade, Platelet activation, Proteolysis, Hypoxia, Response to peptide hormone, Wound healing and other (*Supplementary Table 1*). The manufacturer of the protein assay, Olink Bioscience (Uppsala, Sweden), had no input on the study design, analysis or manuscript preparation.

### **Statistical analysis**

Normally distributed data is shown as means and standard deviation, whereas not normally distributed data as medians and 25<sup>th</sup> until 75<sup>th</sup> percentile, and categorical variables as percentages and frequencies. Differences between variables were tested using one-way ANOVA for normal distributed data; skewed data was tested using Chi-squared test or Kruskal-Wallis test when appropriate. Linear regression was performed to assess associated variables with WHR and BMI. Univariable significant variables ( $P < 0.1$ ) were entered in a multivariable backward selection. The final backward multivariable model contained demographics, clinical variables and laboratory measurements. All non-normally distributed variables were transformed accordingly prior to adding them to the multivariable models. Kaplan-Meier curves were drafted to show differences in survival between tertiles of WHR groups. Cox proportional hazard analysis was performed to determine hazard ratios for the different groups. Restricted cubic splines were used to explore the functional association between WHR on a continuous level and all-cause mortality. Results were summarized by adjusted hazard ratios of the general model (solid line), and confidence intervals based on restricted cubic splines. To assess an independent contribution, all multivariable models were adjusted for a previously published prognostic model within BIoSTAT-CHF, BMI when appropriate for the use of statins, and sex-specific confounders.(13) When WHR is corrected for BMI it has been shown to be a proper

surrogate measurement of abdominal obesity. (14)

To assess each of the pathophysiological domains with WHR, principal component analysis was performed with the markers in each disease domain. The first principal component was used as a linear variable and the association with WHR was univariably assessed with a linear regression and the standardized betas were plotted. P-values were corrected for multiple testing by dividing 0.05 by the number of biomarkers within each of the domains. Interaction between sex and WHR on the risk of death was assessed by modelling WHR on a continuous scale.

All analyses were performed using IBM SPSS Statistics version 23 and R: a Language and Environment for Statistical Computing, version 3.4.2. (R Foundation for Statistical Computing, Vienna, Austria).

## RESULTS

### Baseline characteristics

Patients with measured WHR were included (n=1479), of which 997 were men (67%) and 482 women (33%). Baseline characteristics are depicted in **Table 1**. Mean WHR in women was  $0.93 \pm 0.09$ , and mean WHR in men was  $1.00 \pm 0.08$ .

### Associates of WHR and BMI

**Table 2** shows the associates of WHR or BMI in women and men. In both women and men a higher WHR was associated with a higher body weight ( $P=0.001$  and  $P<0.003$  respectively), higher glucose levels ( $P=0.004$  and  $P=0.001$  respectively) and lower serum iron levels ( $P=0.021$  and  $P=0.020$  respectively). In women a higher WHR was also associated with less use of betablocker ( $\beta=-0.130$ ,  $P=0.018$ ) and higher NT-proBNP ( $\beta=0.156$ ,  $P=0.007$ ). In men a higher WHR was also associated with a lower height ( $\beta=-0.104$ ,  $P=0.006$ ) and a higher age ( $\beta=0.073$ ,  $P=0.046$ ).

BMI was in both women and men associated with higher waist and hip circumference, lower NT-proBNP levels, lower age, and more edema. In women the only other variable associated with a higher BMI was a history of hypertension ( $\beta=0.103$ ,  $P=0.003$ ). In men, variables associated with a higher

BMI were a higher diastolic blood pressure ( $\beta=0.055$ ,  $P=0.033$ ), higher TSH levels ( $\beta=0.051$ ,  $P=0.045$ ) and the presence of diabetes ( $\beta=0.051$ ,  $P=0.050$ ).

### **Biomarkers associated with WHR**

Standardized betas of the principal components of the different domains and WHR were plotted in **Figure 1**. In women the strongest associations of WHR were found with inflammation ( $\beta = 0.181$ ,  $P<0.001$ ) and MAPK cascade ( $\beta = 0.162$ ,  $P<0.001$ ), while in men these associations were less profound and non-significant after correction for multiple testing ( $\beta = 0.081$ ,  $P=0.011$  and  $\beta = 0.082$ ,  $P=0.010$  respectively).

### **Mortality**

We found a significant interaction between sex and WHR on the risk of death ( $P$  for interaction  $<0.001$ ).

During a median follow-up of 21 months, 34% of women had died, ranging from 22% in the lowest tertile to 45% in the highest WHR tertile ( $P<0.001$ ). As shown in **Figure 2**, women with a BMI  $< 30$  kg/m<sup>2</sup> had higher mortality rates compared to women with a BMI  $> 30$  kg/m<sup>2</sup> ( $P=0.042$ ). However, women with a WHR below the mean had a significantly better survival ( $P<0.001$ ). In women, patients in the highest WHR tertile had a significantly higher multivariable adjusted risk of death compared to women in the lowest WHR tertile, as seen in **Table 3** (Hazard ratio (HR) 2.23, [95% Confidence interval (CI) 1.37-3.63],  $P=0.001$ ). The HR was plotted on a continuous scale in **Figure 3**. For women, a linear increase of HR was seen with an increasing WHR.

During a median follow up of 21 months, 33% of the male patients had died, ranging from 31% in the lowest WHR tertile to 37% in the highest WHR tertile. There was no significant difference in a WHR above or below the mean ( $P=0.059$ ). Furthermore, there was no significant difference in HR between the WHR tertiles in men (**Table 3**).

**Supplementary Figure 2** shows the HR for all-cause mortality within HF with reduced ejection fraction (HFrEF), HF with mid-range ejection fraction (HFmrEF) and HF with preserved ejection

fraction (HFpEF). There was no significant interaction found between LVEF on a continuous scale and WHR, or between HF category and WHR. Separate data on waist circumference alone and hip circumference alone in women and men is depicted in *Supplementary Figure 3*.

## **DISCUSSION**

This is the first study to show an association between a higher WHR, reflecting abdominal obesity, and an increased risk of death in female patients with HF, but not in male patients. Patients with a lower BMI and a higher WHR had the highest all-cause mortality risks in both women and men.

### **Waist-hip ratio, BMI and mortality**

We found a significant interaction between sex and the association of WHR and the risk of death. The complex relationship between fat distribution and outcome has been an on-going topic throughout the past years, where a recent study has even hinted that patients with a higher waist circumference might benefit more from eplerenone treatment.(15) Koster et al. have recently shown that in men intermuscular fat was associated with higher mortality, while in woman visceral fat was associated with increased mortality risks.(16) Adipose tissue is known to be a secreting organ of multiple adipokines. Gluteofemoral fat is known to secrete more favourable adipokines and thus can be associated with better outcome, while visceral fat is known to be associated with a worse outcome.(17,18) One of the explanations for the difference seen in women and men in our study could be that fat distributes differently in both sexes. While men are known to accumulate more visceral fat, and therefore have a higher WHR, women often store fat subcutaneously in the gluteofemoral region.(19) If WHR increases substantially in women, this might therefore supersede the beneficial effects of subcutaneous fat and significantly increase mortality rates. We also found a higher WHR in women to be more strongly associated with markers of inflammation and MAPK cascade. As is known, the MAPK cascade is often involved in cardiac remodelling and vascular disease.(20) A



variety of different cascades play a role in hypertrophy and pathological remodelling, and are known to be associated with worse outcomes.(21) The same holds true for the process of inflammation, which is known to be associated with HF, especially HFpEF.(22,23) Inflammation is also known to be associated with adverse cardiac remodelling, and worse outcome in HF.(24) The stronger associations within women with a higher WHR and these processes might (partially) explain the worse outcome we found in women.

### **Obesity paradox**

Several studies have previously shown that patients with HF and with higher BMI levels had a lower mortality risk compared to HF patients with normal or a low BMI.(4,25) There are however multiple limitations on the use of BMI as a measurement for obesity. BMI does not provide an indication of the fat distribution in the body, and could also be raised with more decompensated HF patients due to fluid accumulation. Furthermore, BMI has the limitation that it does not differ between fat and muscle mass, and therefore might not differ between fitness and fatness. In a recent analysis, Piepoli et al. have shown that exercise tolerance matters, and after correction for cardiorespiratory fitness the protective effect of BMI disappeared.(26)

Previous studies using solely waist circumference as a measurement of abdominal obesity showed contradicting results with our study, where in patients with HFrEF a higher waist circumference was associated with lower mortality rates Tsujimoto et al found a higher waist circumference in patients with HFpEF to be associated with higher mortality rates in a multivariable analysis.(6,27,28) Part of the difference could be explained by the fact that we used WHR instead of waist circumference alone. When assessing WHR, not only waist circumference is used, but by using WHR one might discriminate more accurately between abdominal fat (large waist circumference, normal/small hip circumference) and merely a larger body size (large waist circumference and large hip circumference). In the present study, we showed that fat distribution matters, where an increase in WHR in patients with HF is associated with a gradual increase in risk of death, and that this was more pronounced in women.

The risk associated with abdominal obesity in the general population was previously shown in a paper by Pischon et al., which showed a U-shaped risk for mortality with BMI, but abdominal obesity was associated with an increasing mortality risk.(29) Although the underlying mechanisms are unknown, one can speculate about possible contributing factors. A high WHR is known to be associated with a high burden of atherosclerosis, where the association between BMI and atherosclerosis is less pronounced. Therefore central obesity might play a role in the initiation and progress of atherosclerosis.(30) Although this might hold true for the general population, it was unknown whether the same risk was associated with mortality in patients with HF.

### **Metabolic syndrome**

We showed a higher prevalence of diabetes mellitus, higher glucose levels and lower HDL cholesterol with increasing WHR. A higher WHR is known to be associated and incorporated within the definition of the metabolic syndrome.(31,32) This syndrome consists of multiple factors, some of which are associated with increased survival (such as obesity), or are known to worsen onset and/or progression of HF.(33,34) Most likely the metabolic syndrome induces a pro-inflammatory state, where abdominal adiposity plays a pivotal role. Consistent with these results, we found higher levels of inflammatory markers in the upper tertiles of WHR. An altered balance in adipokines and increasing insulin resistance are most likely responsible for the association with worse outcome for patients with metabolic syndrome, together with accompanying comorbidities such as hypertension and dyslipidaemia.(35) Besides these systemic effects of central adiposity, there is also an association with adverse cardiac mechanisms such as worse global longitudinal strain and early diastolic strain rate. This association was found for both abdominal obesity and WHR.(36,37) To the best of our knowledge, we are the first to show this increased risk for female patients and a higher WHR in a HF population.

### **Strengths and limitations**

This study is limited by its retrospective nature. Secondly, in patients with HF and a large abdominal

mass, it is difficult to distinguish between fat and fluid. Thirdly, WHR measurements were performed by different individuals, although they were provided with clear instructions.

## **CONCLUSION**

A higher WHR was associated with higher mortality in female, but not in male HF patients. This might be explained by a higher inflammatory status with a higher WHR in woman, but not in men. This association was independent of BMI. These findings challenge the obesity paradox, and suggest that abdominal fat deposition is pathophysiologically harmful and maybe a target for therapy in (female) patients with HF.

## **FUNDING**

This work was supported by the Netherlands Cardiovascular Research Initiative: an initiative with support of the Dutch Heart Foundation [CVON2014-11 RECONNECT] and a grant from the European Commission [FP7-242209-BIOSTAT-CHF; EudraCT 2010–020808–29].

## **DISCLOSURES**

A.A.V reports consultancy fees and/or research grants from: Amgen, Bayer, Boehringer Ingelheim, Merck/MSD, Novartis, Roche Diagnostics, Servier, Trevena, Vifor. S.D.A. reports grants from Vifor and Abbott Vascular, and fees for consultancy from Vifor, Bayer, Boehringer Ingelheim, Brahms, Janssen, Novartis, Servier, Stealth Peptides, and ZS Pharma. K.D. has received honoraria and/or research support from Medtronic, Boston Scientific St Jude, Biotronik and Sorin (device companies),

and Merck, Novartis, Amgen, Boehringer Ingelheim, Astra Zeneca, Pfizer, Bayer, GSK, Roche, Sanofi, Abbott, Otsuka, Leo, Servier, and Bristol Meyers Squibb (pharmaceutical companies). G.F. has received committee fees and/or research grants from Novartis, Bayer, Servier. C.C.L. received consultancy fees and/or research grants from Amgen, Astra Zeneca, MSD, Novartis, and Servier. M.M. has received consulting honoraria from Amgen, Astra Zeneca, Novartis, Relypsa, and Servier, and speaker's fees from Abbott Vascular and Servier. DvV has received Board Membership Fees or Travel expenses from Arca Biopharma, Corvia Medical, Johnson & Johnson and Novartis. C.C.L. received consultancy fees and/or research grants from Amgen, Astra Zeneca, MSD, Novartis, and Servier. All other authors declare no conflict of interest.

## REFERENCES

1. Lavie CJ, Ventura HO. Analyzing the weight of evidence on the obesity paradox and heart failure--is there a limit to the madness? *Congest Heart Fail* 2013;**19**:158-159.
2. Shah R, Gayat E, Januzzi JL, Jr, Sato N, Cohen-Solal A, diSomma S, Fairman E, Harjola VP, Ishihara S, Lassus J, Maggioni A, Metra M, Mueller C, Mueller T, Parenica J, Pascual-Figal D, Peacock WF, Spinar J, van Kimmenade R, Mebazaa A, GREAT (Global Research on Acute Conditions Team) Network. Body mass index and mortality in acutely decompensated heart failure across the world: a global obesity paradox. *J Am Coll Cardiol* 2014;**63**:778-785.
3. Parissis J, Farmakis D, Kadooglou N, Ikonomidis I, Fountoulaki E, Hatziagelaki E, Deftereos S, Follath F, Mebazaa A, Lekakis J, Filippatos G. Body mass index in acute heart failure: association with clinical profile, therapeutic management and in-hospital outcome. *Eur J Heart Fail* 2016;**18**:298-305.
4. Lavie CJ, Sharma A, Alpert MA, De Schutter A, Lopez-Jimenez F, Milani RV, Ventura HO. Update on Obesity and Obesity Paradox in Heart Failure. *Prog Cardiovasc Dis* 2016;**58**:393-400.
5. Aune D, Sen A, Norat T, Janszky I, Romundstad P, Tonstad S, Vatten LJ. Body Mass Index, Abdominal Fatness, and Heart Failure Incidence and Mortality: A Systematic Review and Dose-Response Meta-Analysis of Prospective Studies. *Circulation* 2016;**133**:639-649.
6. Clark AL, Fonarow GC, Horwich TB. Waist circumference, body mass index, and survival in systolic heart failure: the obesity paradox revisited. *J Card Fail* 2011;**17**:374-380.
7. Weschenfelder C, Marcadenti A, Stein AT, Gottschall CB. Enlarged waist combined with elevated triglycerides (hypertriglyceridemic waist phenotype) and HDL-cholesterol in patients with heart failure. *Sao Paulo Med J* 2017;**135**:50-56.
8. Voors AA, Anker SD, Cleland JG, Dickstein K, Filippatos G, van der Harst P, Hillege HL, Lang CC, Ter Maaten JM, Ng L, Ponikowski P, Samani NJ, van Veldhuisen DJ, Zannad F, Zwinderman AH, Metra M. A systems BIOlogy Study to Tailored Treatment in Chronic Heart Failure: rationale, design, and baseline characteristics of BIOSTAT-CHF. *Eur J Heart Fail* 2016;**18**:716-726.
9. Ouwerkerk W, Voors AA, Anker SD, Cleland JG, Dickstein K, Filippatos G, van der Harst P, Hillege HL, Lang CC, Ter Maaten JM, Ng LL, Ponikowski P, Samani NJ, van Veldhuisen DJ, Zannad F, Metra M, Zwinderman AH. Determinants and clinical outcome of uptitration of ACE-inhibitors and beta-blockers in patients with heart failure: a prospective European study. *Eur Heart J* 2017;**38**:1883-1890.
10. Ferreira JP, Rossignol P, Machu JL, Sharma A, Girerd N, Anker SD, Cleland JG, Dickstein K, Filippatos G, Hillege HL, Lang CC, Ter Maaten JM, Metra M, Ng L, Ponikowski P, Samani NJ, van Veldhuisen DJ, Zwinderman AH, Voors A, Zannad F. Mineralocorticoid receptor antagonist pattern of use in heart failure with reduced ejection fraction: findings from BIOSTAT-CHF. *Eur J Heart Fail* 2017;**19**:1284-1293.
11. Ponikowski P, Voors AA, Anker SD, Bueno H, Cleland JG, Coats AJ, Falk V, Gonzalez-Juanatey JR, Harjola VP, Jankowska EA, Jessup M, Linde C, Nihoyannopoulos P, Parissis JT, Pieske B, Riley JP, Rosano GM, Ruilope LM, Ruschitzka F, Rutten FH, van der Meer P, Authors/Task Force Members, Document Reviewers. 2016 ESC Guidelines for the diagnosis and treatment of acute and chronic heart failure: The Task Force for the diagnosis and treatment of acute and chronic heart failure of the European Society of Cardiology (ESC). Developed with the special contribution of the Heart Failure Association (HFA) of the ESC. *Eur J Heart Fail* 2016;**18**:891-975.

12. Assarsson E, Lundberg M, Holmquist G, Bjorkesten J, Thorsen SB, Ekman D, Eriksson A, Rennel Dickens E, Ohlsson S, Edfeldt G, Andersson AC, Lindstedt P, Stenvang J, Gullberg M, Fredriksson S. Homogenous 96-plex PEA immunoassay exhibiting high sensitivity, specificity, and excellent scalability. *PLoS One* 2014;**9**:e95192.
13. Voors AA, Ouwerkerk W, Zannad F, van Veldhuisen DJ, Samani NJ, Ponikowski P, Ng LL, Metra M, Ter Maaten JM, Lang CC, Hillege HL, van der Harst P, Filippatos G, Dickstein K, Cleland JG, Anker SD, Zwinderman AH. Development and validation of multivariable models to predict mortality and hospitalization in patients with heart failure. *Eur J Heart Fail* 2017;**19**:627-634.
14. Emdin CA, Khera AV, Natarajan P, Klarin D, Zekavat SM, Hsiao AJ, Kathiresan S. Genetic Association of Waist-to-Hip Ratio With Cardiometabolic Traits, Type 2 Diabetes, and Coronary Heart Disease. *JAMA* 2017;**317**:626-634.
15. Olivier A, Pitt B, Girerd N, Lamiral Z, Machu JL, McMurray JJV, Swedberg K, van Veldhuisen DJ, Collier TJ, Pocock SJ, Rossignol P, Zannad F, Pizard A. Effect of eplerenone in patients with heart failure and reduced ejection fraction: potential effect modification by abdominal obesity. Insight from the EMPHASIS-HF trial. *Eur J Heart Fail* 2017;**19**:1186-1197.
16. Koster A, Murphy RA, Eiriksdottir G, Aspelund T, Sigurdsson S, Lang TF, Gudnason V, Launer LJ, Harris TB. Fat distribution and mortality: the AGES-Reykjavik Study. *Obesity (Silver Spring)* 2015;**23**:893-897.
17. Manolopoulos KN, Karpe F, Frayn KN. Gluteofemoral body fat as a determinant of metabolic health. *Int J Obes (Lond)* 2010;**34**:949-959.
18. Santema BT, Lam CSP. Heart Failure in Women: Risk Across a Woman's Adult Life. *J Card Fail* 2017;**23**:379-381.
19. Palmer BF, Clegg DJ. The sexual dimorphism of obesity. *Mol Cell Endocrinol* 2015;**402**:113-119.
20. Li CY, Yang LC, Guo K, Wang YP, Li YG. Mitogen-activated protein kinase phosphatase-1: a critical phosphatase manipulating mitogen-activated protein kinase signaling in cardiovascular disease (review). *Int J Mol Med* 2015;**35**:1095-1102.
21. Rose BA, Force T, Wang Y. Mitogen-activated protein kinase signaling in the heart: angels versus demons in a heart-breaking tale. *Physiol Rev* 2010;**90**:1507-1546.
22. Komajda M, Lam CS. Heart failure with preserved ejection fraction: a clinical dilemma. *Eur Heart J* 2014;**35**:1022-1032.
23. Paulus WJ, Tschope C. A novel paradigm for heart failure with preserved ejection fraction: comorbidities drive myocardial dysfunction and remodeling through coronary microvascular endothelial inflammation. *J Am Coll Cardiol* 2013;**62**:263-271.
24. Nymo SH, Hulthe J, Ueland T, McMurray J, Wikstrand J, Askevold ET, Yndestad A, Gullestad L, Aukrust P. Inflammatory cytokines in chronic heart failure: interleukin-8 is associated with adverse outcome. Results from CORONA. *Eur J Heart Fail* 2014;**16**:68-75.
25. Sharma A, Lavie CJ, Borer JS, Vallakati A, Goel S, Lopez-Jimenez F, Arbab-Zadeh A, Mukherjee D, Lazar JM. Meta-analysis of the relation of body mass index to all-cause and cardiovascular mortality and hospitalization in patients with chronic heart failure. *Am J Cardiol* 2015;**115**:1428-1434.
26. Piepoli MF, Corra U, Veglia F, Bonomi A, Salvioni E, Cattadori G, Metra M, Lombardi C, Sinagra G, Limongelli G, Raimondo R, Re F, Magri D, Belardinelli R, Parati G, Mina C, Scardovi AB, Guazzi M, Ciccoira

M, Scrutinio D, Di Lenarda A, Bussotti M, Frigerio M, Correale M, Villani GQ, Paolillo S, Passino C, Agostoni P, MECKI Score Research Group. Exercise tolerance can explain the obesity paradox in patients with systolic heart failure: data from the MECKI Score Research Group. *Eur J Heart Fail* 2016;**18**:545-553.

27. Clark AL, Chyu J, Horwich TB. The obesity paradox in men versus women with systolic heart failure. *Am J Cardiol* 2012;**110**:77-82.

28. Tsujimoto T, Kajio H. Abdominal Obesity Is Associated With an Increased Risk of All-Cause Mortality in Patients With HFpEF. *J Am Coll Cardiol* 2017;**70**:2739-2749.

29. Pischon T, Boeing H, Hoffmann K, Bergmann M, Schulze MB, Overvad K, van der Schouw YT, Spencer E, Moons KG, Tjonneland A, Halkjaer J, Jensen MK, Stegger J, Clavel-Chapelon F, Boutron-Ruault MC, Chajes V, Linseisen J, Kaaks R, Trichopoulou A, Trichopoulos D, Bamia C, Sieri S, Palli D, Tumino R, Vineis P, Panico S, Peeters PH, May AM, Bueno-de-Mesquita HB, van Duijnhoven FJ, Hallmans G, Weinhall L, Manjer J, Hedblad B, Lund E, Agudo A, Arriola L, Barricarte A, Navarro C, Martinez C, Quiros JR, Key T, Bingham S, Khaw KT, Boffetta P, Jenab M, Ferrari P, Riboli E. General and abdominal adiposity and risk of death in Europe. *N Engl J Med* 2008;**359**:2105-2120.

30. See R, Abdullah SM, McGuire DK, Khera A, Patel MJ, Lindsey JB, Grundy SM, de Lemos JA. The association of differing measures of overweight and obesity with prevalent atherosclerosis: the Dallas Heart Study. *J Am Coll Cardiol* 2007;**50**:752-759.

31. Kaur J. A comprehensive review on metabolic syndrome. *Cardiol Res Pract* 2014;**2014**:943162.

32. Han TS, Lean ME. A clinical perspective of obesity, metabolic syndrome and cardiovascular disease. *JRSM Cardiovasc Dis* 2016;**5**:2048004016633371-Dec.

33. Perrone-Filardi P, Paolillo S, Costanzo P, Savarese G, Trimarco B, Bonow RO. The role of metabolic syndrome in heart failure. *Eur Heart J* 2015;**36**:2630-2634.

34. Tamariz L, Hassan B, Palacio A, Arcement L, Horswell R, Hebert K. Metabolic syndrome increases mortality in heart failure. *Clin Cardiol* 2009;**32**:327-331.

35. Ritchie SA, Connell JM. The link between abdominal obesity, metabolic syndrome and cardiovascular disease. *Nutr Metab Cardiovasc Dis* 2007;**17**:319-326.

36. Selvaraj S, Martinez EE, Aguilar FG, Kim KY, Peng J, Sha J, Irvin MR, Lewis CE, Hunt SC, Arnett DK, Shah SJ. Association of Central Adiposity With Adverse Cardiac Mechanics: Findings From the Hypertension Genetic Epidemiology Network Study. *Circ Cardiovasc Imaging* 2016;**9**:10.1161/CIRCIMAGING.115.004396.

37. Russo C, Sera F, Jin Z, Palmieri V, Homma S, Rundek T, Elkind MS, Sacco RL, Di Tullio MR. Abdominal adiposity, general obesity, and subclinical systolic dysfunction in the elderly: A population-based cohort study. *Eur J Heart Fail* 2016;**18**:537-544.

Table 1; Baseline characteristics

Sex	Women				Men			
Waist-hip-ratio	1 <sup>st</sup> tertile	2 <sup>nd</sup> tertile	3 <sup>rd</sup> tertile	P-value	1 <sup>st</sup> tertile	2 <sup>nd</sup> tertile	3 <sup>rd</sup> tertile	P-value
N =	171	151	160		360	282	355	
Waist-hip-ratio	0.84±0.05	0.93±0.02	1.02±0.05	<0.001	0.92±0.04	0.99±0.02	1.08±0.07	<0.001
Age (years)	76±11	77±11	77±11	0.539	75±11	76±10	75±10	0.856
Systolic Blood Pressure (mmHg)	125±22	129±26	125±24	0.207	126±21	125±22	126±22	0.689
Diastolic Blood Pressure (mmHg)	68±13	67±15	68±14	0.558	71±12	68±11	71±13	0.039
Heart Rate (beats/min)	73±15	75±16	78±17	0.009	72±16	72±17	73±15	0.739
Clinical profile								
LVEF (%)	43±13	43±14	44±13	0.695	39±13	40±11	39±12	0.865
HFrEF (%)	61 (39)	62 (44)	53 (37)	0.659	169 (51)	135 (51)	182 (55)	0.130
HFmrEF (%)	43 (27)	30 (21)	36 (25)		89 (27)	81 (30)	71 (21)	
HFpEF (%)	53 (34)	49 (35)	54 (38)		71 (22)	51 (19)	80 (24)	
Peripheral edema present (%)	89 (59)	95 (66)	107 (74)	0.020	155 (48)	158 (63)	203 (61)	<0.001
Rales present (%)	51 (32)	67 (46)	85 (54)	0.001	122 (36)	116 (43)	149 (43)	0.103
Elevated JVP (%)	38 (26)	46 (34)	37 (26)	0.255	90 (29)	82 (32)	90 (29)	0.629
Height (cm)	159±7	159±7	158±8	0.489	173±8	173±8	173±9	0.579
Weight (kg)	68.8±18.2	76.2±18.2	75.2±17.8	<0.001	80.3±15.6	86.1±17.6	92.4±20.9	<0.001
Body mass index (kg/m <sup>2</sup> )	25.7 [22.9-30.8]	29.6 [25.1-33.7]	29.6 [25.2-35.2]	<0.001	26.2 [23.5-29.7]	28.8 [25.1-31.8]	30.7 [26.5-34.4]	<0.001
Medical History								
Hypertension (%)	95 (56)	92 (61)	102 (64)	0.360	188 (52)	150 (53)	222 (63)	0.010
Myocardial Infarction (%)	71 (42)	49 (33)	73 (46)	0.053	180 (50)	163 (58)	191 (54)	0.130
PCI (%)	24 (14)	27 (18)	31 (19)	0.409	69 (19)	72 (26)	55 (16)	0.006
CABG (%)	15 (9)	12 (8)	15 (9)	0.905	75 (21)	65 (23)	81 (23)	0.759
Diabetes mellitus (%)	40 (23)	43 (29)	58 (37)	0.033	92 (26)	82 (29)	153 (43)	<0.001
Stroke (%)	28 (17)	22 (15)	32 (20)	0.448	66 (18)	44 (16)	72 (21)	0.321
Atrial Fibrillation (%)	74 (44)	54 (36)	65 (41)	0.363	177 (50)	124 (44)	160 (45)	0.307



Sex	Women				Men			
Waist-hip-ratio	1 <sup>st</sup> tertile	2 <sup>nd</sup> tertile	3 <sup>rd</sup> tertile	P-value	1 <sup>st</sup> tertile	2 <sup>nd</sup> tertile	3 <sup>rd</sup> tertile	P-value
N =	171	151	160		360	282	355	
COPD (%)	29 (17)	27 (18)	41 (26)	0.110	57 (16)	48 (17)	60 (17)	0.891
Peripheral arterial disease (%)	28 (17)	40 (27)	35 (23)	0.070	79 (23)	73 (26)	78 (23)	0.484
NYHA Class				<0.001				<0.001
1	1 (0.6)	0 (0)	0 (0)		8 (2.2)	1 (0.4)	5 (1.4)	
2	83 (48.5)	48 (32.0)	43 (26.9)		200 (55.6)	127 (45.0)	139 (39.2)	
3	69 (40.4)	74 (49.3)	74 (46.3)		129 (35.8)	130 (46.1)	160 (45.1)	
4	18 (10.5)	28 (18.7)	43 (26.9)		23 (6.4)	24 (8.5)	51 (14.4)	
Beta blocker (%)	122 (71)	97 (64)	104 (65)	0.321	277 (77)	212 (75)	260 (73)	0.519
MRA (%)	52 (30)	51 (34)	46 (29)	0.622	115 (32)	91 (32)	119 (34)	0.895
Diuretics (%)	170 (99)	149 (99)	156 (98)	0.342	353 (98)	280 (99)	352 (99)	0.269
ACE-i/ARB (%)	130 (76)	97 (64)	102 (64)	0.025	269 (75)	209 (74)	258 (73)	0.817
Statins (%)	95 (56)	87 (58)	97 (61)	0.645	218 (61)	187 (66)	232 (65)	0.249
Laboratory values								
Glucose (mmol/L)	5.5 [4.8-7.0]	6.1 [5.1-8.1]	6.7 [5.7-8.7]	<0.001	5.8 [5.0-7.3]	6.2 [5.3-8.3]	6.8 [5.6-10.2]	<0.001
	1.32	1.25	1.20		1.08	1.05	1.02	
HDL cholesterol	[1.03-1.64]	[1.03-1.53]	[0.96-1.49]	0.211	[0.89-1.37]	[0.85-1.28]	[0.84-1.22]	0.002
	1027	1142	1758		1391	1299	1240	
NT-proBNP (ng/L)	[383-2594]	[364-2907]	[528-4953]	0.029	[554-3177]	[508-2937]	[486-3289]	0.665
	6.04	6.45	6.57		5.37	5.65	5.88	
FABP4	[5.36-6.79]	[5.72-7.53]	[5.68-7.38]	<0.001	[4.75-6.12]	[4.98-6.32]	[5.23-6.74]	<0.001
	5.32	5.54	5.56		5.29	5.40	5.46	
TNF-R1	[4.92-5.88]	[5.01-6.12]	[5.09-6.06]	0.015	[4.89-5.73]	[5.01-5.89]	[5.02-6.15]	<0.001
Outcome								
All-cause mortality (%)	38 (22.2)	47 (31.3)	72 (45.0)	<0.001	112 (31.1)	92 (32.9)	130 (36.9)	0.245
Hospitalization (%)	50 (29.4)	69 (46.0)	73 (45.6)	0.002	131 (36.4)	82 (29.3)	136 (38.7)	0.040

Values are given as means  $\pm$  standard deviation, median (25th to 75th percentiles) or percentage and frequency

LVEF = Left ventricular ejection fraction; HFrEF = Heart failure with reduced ejection fraction; HFmrEF = Heart failure with mid-range ejection fraction; HFpEF = Heart failure with preserved ejection fraction; JVP = Jugular venous pressure; PCI = Percutaneous coronary intervention; CABG = Coronary artery bypass surgery; COPD = Chronic obstructive pulmonary disease; NYHA = New York Heart Association; MRA = Mineralocorticoid receptor antagonist; ACE-i/ARB = ACE-inhibitor/Angiotensin II receptor blocker; HDL = High density lipoprotein; NT-proBNP = N-terminal pro brain natriuretic peptide; KCCQ = Kansas city Cardiomyopathy Questionnaire; VAS = Visual analog scale

**Table 2; Multivariable linear regression for waist-hip ratio and body mass index**

<b>WHR</b>	<b>Women</b>	<b>R<sup>2</sup>=0.11</b>		<b>Men</b>	<b>R<sup>2</sup>=0.18</b>	
<b>Variable</b>	<b>β</b>	<b>t-value</b>	<b>p-value</b>	<b>β</b>	<b>t-value</b>	<b>p-value</b>
<b>Weight</b>	0.170	3.00	0.003	0.426	10.9	<0.001
<b>Glucose</b>	0.157	2.87	0.004	0.115	3.24	0.001
<b>NT-proBNP</b>	0.156	2.71	0.007			
<b>Betablocker</b>	-0.130	-2.37	0.018			
<b>Iron, serum</b>	-0.126	-2.32	0.021	-0.082	-2.33	0.020
<b>Height</b>				-0.104	-2.76	0.006
<b>Age</b>				0.073	2.00	0.046

<b>BMI</b>	<b>Women</b>	<b>R<sup>2</sup>=0.66</b>		<b>Men</b>	<b>R<sup>2</sup>=0.62</b>	
<b>Variable</b>	<b>β</b>	<b>t-value</b>	<b>p-value</b>	<b>β</b>	<b>t-value</b>	<b>p-value</b>
<b>Waist circumference</b>	0.385	6.43	<0.001	0.447	10.7	<0.001
<b>Hip circumference</b>	0.366	6.05	<0.001	0.279	6.69	<0.001
<b>Age</b>	-0.136	-3.66	<0.001	-0.109	-4.11	<0.001
<b>History of hypertension</b>	0.103	2.96	0.003			
<b>Edema</b>	0.095	2.66	0.008	0.052	1.99	0.047
<b>NT-proBNP</b>	-0.080	-2.18	0.030	-0.118	-4.20	<0.001
<b>Diastolic blood pressure</b>				0.055	2.14	0.033
<b>TSH</b>				0.051	2.01	0.045
<b>Diabetes</b>				0.051	1.96	0.050

All univariable significant variables (P<0.1) where entered in a multivariable backward selection. WHR = Waist-hip ratio; BMI = Body mass index; HDL = High density lipoprotein; NT-proBNP = N-terminal pro brain natriuretic peptide; TSH = thyroid stimulation hormone

**Table 3; Hazard ratio for tertiles of Waist-hip ratio and all-cause mortality**

<b>All-cause mortality</b>				
<b>Women</b>	<b>Hazard ratio<sup>°</sup></b>	<b>P-value</b>	<b>Hazard ratio<sup>*</sup></b>	<b>P-value</b>
<b>Waist-hip ratio 1<sup>st</sup> tertile</b>	Ref		Ref	
	1.49		1.11	
<b>Waist-hip ratio 2<sup>nd</sup> tertile</b>	[0.97-2.29]	0.068	[0.66-1.89]	0.692
	2.40		2.23	
<b>Waist-hip ratio 3<sup>rd</sup> tertile</b>	[1.62-3.56]	<0.001	[1.37-3.63]	0.001
<b>All-cause mortality</b>				
<b>Men</b>	<b>Hazard ratio<sup>°</sup></b>	<b>P-value</b>	<b>Hazard ratio<sup>×</sup></b>	<b>P-value</b>
<b>Waist-hip ratio 1<sup>st</sup> tertile</b>	Ref		Ref	
	1.12		0.92	
<b>Waist-hip ratio 2<sup>nd</sup> tertile</b>	[0.85-1.48]	0.419	[0.66-1.27]	0.596
	1.24		0.87	
<b>Waist-hip ratio 3<sup>rd</sup> tertile</b>	[0.97-1.60]	0.091	[0.63-1.20]	0.409

<sup>°</sup> Univariable model

<sup>\*</sup> Corrected for age, BMI, Urea, NT-proBNP, hemoglobin, use of beta-blocker, heart rate, presence of rales, NYHA class, history of diabetes, ACE/ARB use, glucose, FABP4 and use of statins

<sup>×</sup> Corrected for age, BMI, Urea, NT-proBNP, hemoglobin, use of beta-blocker, diastolic blood pressure, presence of peripheral edema, NYHA class, history of hypertension, history of diabetes, HDL levels, glucose, FABP4 and use of statins

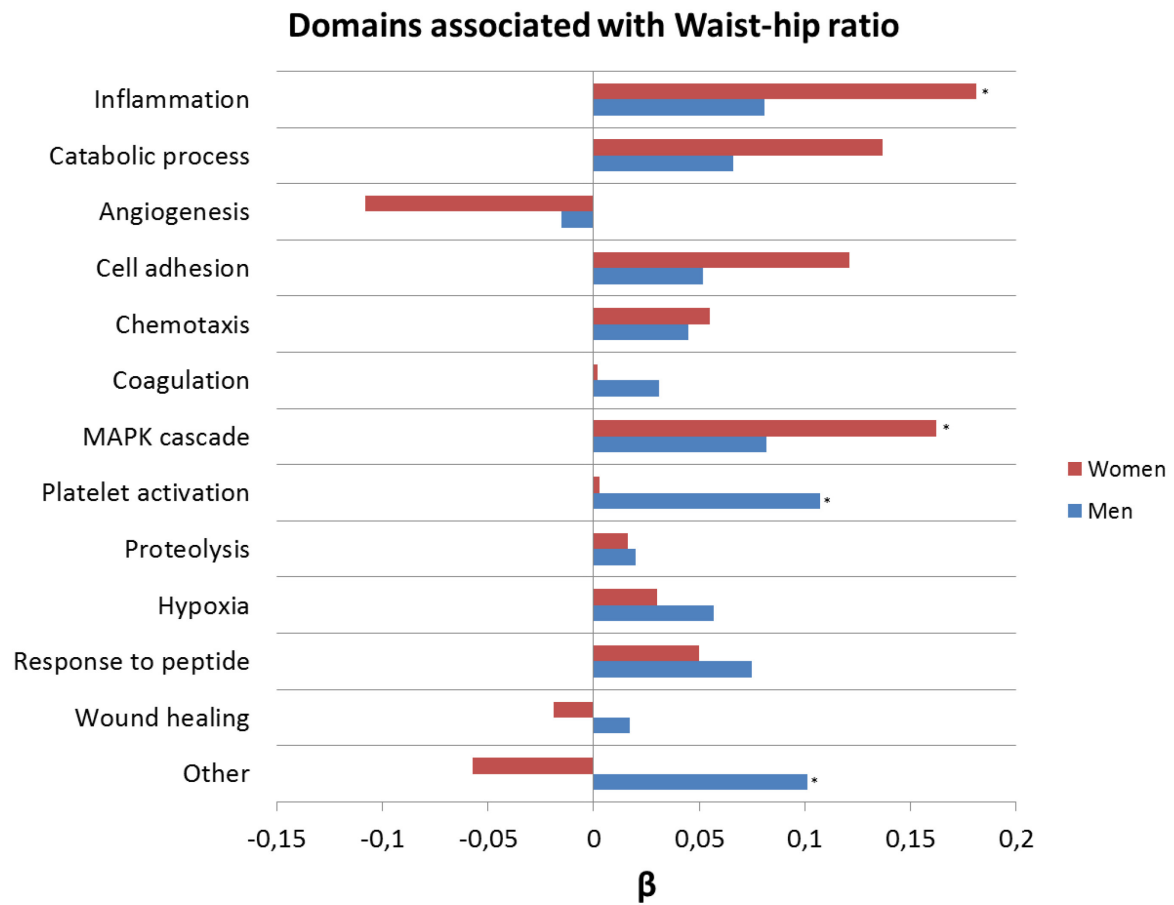
P for interaction <0.001 between sex and waist-hip ratio for all-cause mortality

**Figure legends:**

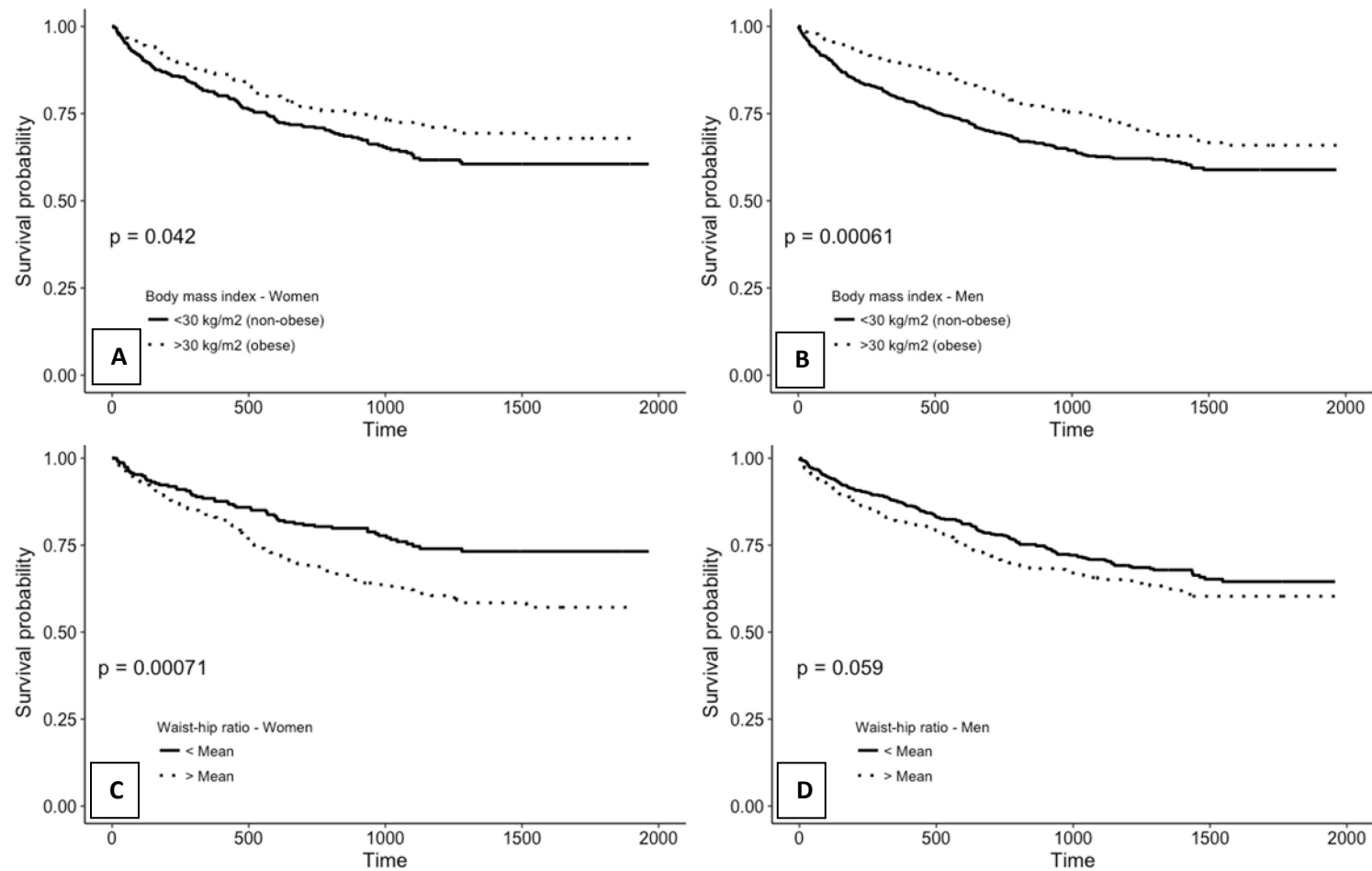
Figure 1; Linear regression for different domains with Waist-hip ratio in women and men

Figure 2; Kaplan-Meier for obesity based on BMI in women (A) and men (B). At the bottom for waist-hip ratio in women (C) and men (D), according to the WHO guidelines

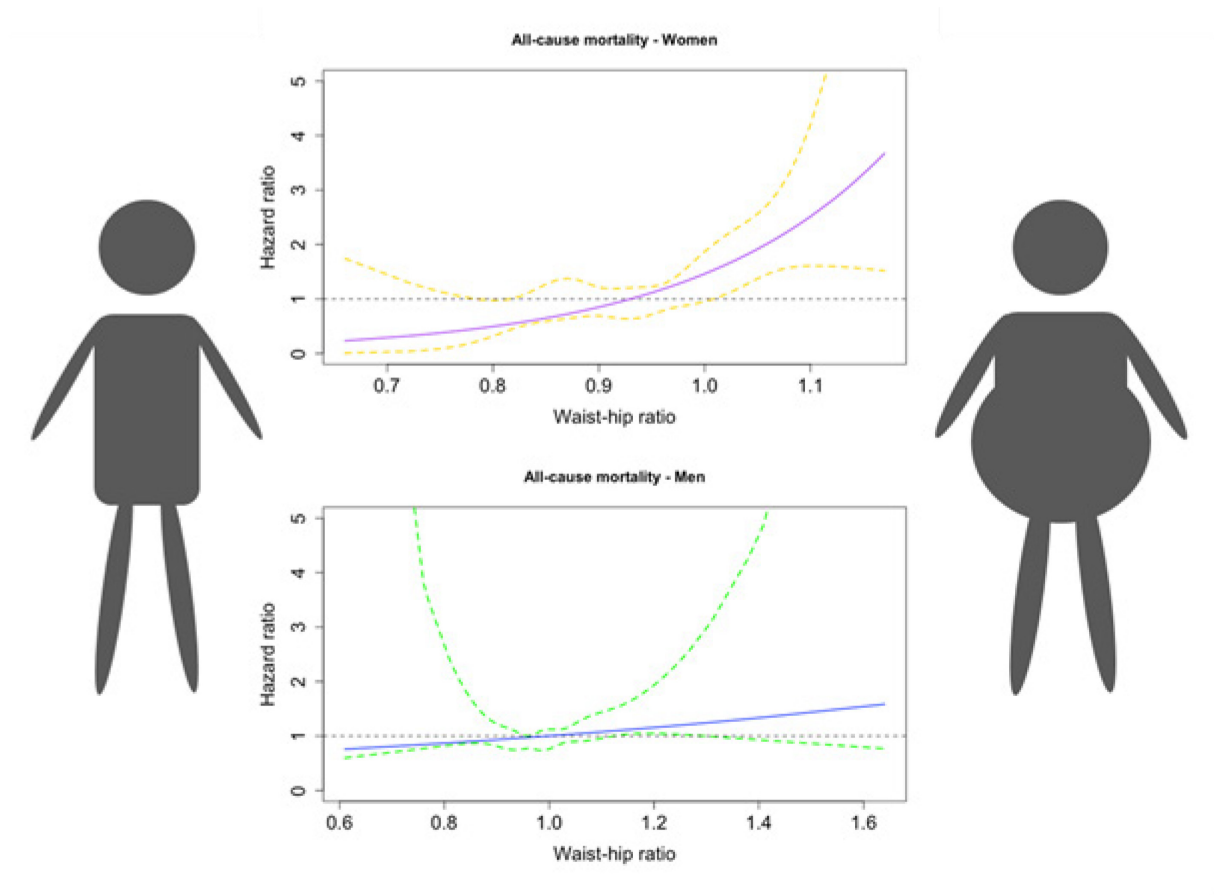
Figure 3; Hazard ratio for Waist-hip ratio on a continuous scale for women and men. All corrected for age, Urea, NT-proBNP, hemoglobin, use of beta-blocker, statins and BMI



**Figure 1; Linear regression for different domains with Waist-hip ratio in women and men \*=significant p-value after correction for multiple testing**



**Figure 2; Kaplan-Meier for obesity based on BMI in women (A) and men (B). At the bottom for waist-hip ratio in women (C) and men (D), split on the population mean.**



**Figure 3; Adjusted effect of WHR on hazard ratio for all-cause mortality. Solid line shows estimated linear relation of WHR, while the dotted lines are 95% confidence intervals for a more general relation using restricted cubic splines. Corrected for age, Urea, NT-proBNP, hemoglobin, use of beta-blocker, statins, heart rate, presence of rales, NYHA class, history of diabetes, ACE/ARB use, glucose levels, FABP4 and BMI for women.**

**Corrected for age, BMI, Urea, NT-proBNP, hemoglobin, use of beta-blocker, diastolic blood pressure, presence of peripheral edema, NYHA class, history of hypertension, history of diabetes, HDL levels, glucose, FABP4 and use of statins for men.**

**Overall P-value within women  $P < 0.001$  and men  $P = 0.136$**



# SUPPLEMENTARY MATERIAL

**Supplementary Table 1; Olink biomarkers and domains**

Domain	Markers
<b>Inflammation</b>	AZU1, CCL15, CCL16, CCL22, CCL24, CHI3L1, SELE, FABP4, ITGB2, IL-1RT1, IL-17RA, IL2-RA, IL6-RA, JAM-A, LTBR, MCP-1, OPN, SELP, PGLYRP1, PAI, RARRES2, CD163, ST2, TR-AP, TR, TNF-R1, TNF-R2, TNFRSF10C, TNFRSF14, FAS, AXL
<b>Catabolic process</b>	AP-N, CASP-3, CTSD, CTSZ, CHIT1, COL1A1, CD93, EGFR, FABP4, KLK6, LDL receptor, MMP-2, MMP-3, MMP-9, TIMP4, PRTN3, MPO, PON3, PGLYRP1, PLC, PCSK9, RARRES2, TNF-R2
<b>Angiogenesis/blood vessel morphogenesis</b>	AP-N, CCL24, CHI3L1, 4EPHB4, ITGB2, MMP-2, MCP-1, NOTCH3, PLC, PAI, PDGF subunit A, uPA
<b>Cell adhesion</b>	AZU1, CDH5, CASP-3, ALCAM, COL1A1, CD93, CNTN1, SELE, 4EPHB4, EGFR, Ep-Cam, Gal-3, Gal-4, IGFBP-2, IGFBP-7, ITGB2, ICAM-2, IL2-RA, MCP-1, OPN, SELP, PAI, PECAM-1, PSP-D, SPON1, TR-AP, TLT-2, TNFRSF14, FAS, AXL, SHPS-1, uPA, vWF
<b>Chemotaxis</b>	AZU1, CCL15, CCL16, CCL22, CCL24, CXCL16, ALCAM, Gal-3, ITGB2, IL6-RA, MCP-1, PAI, PSP-D, RARRES2, uPA
<b>Coagulation</b>	COL1A1, PRTN3, SELP, PAI, PDGF subunit A, TFPI, t-PA, AXL, U-PAR, uPA, vWF
<b>MAPK cascade</b>	CCL15, CCL16, CCL22, CCL24, CHI3L1, EGFR, GDF-15, IL2-RA, IL6-RA, LTBR, MCP-1, OPG, PDGF subunit A, TNF-R2, TNFRSF14, FAS
<b>Platelet activation</b>	COL1A1, SELP, PDGF subunit A, AXL, vWF
<b>Proteolysis</b>	AZU1, BLM hydrolase, CPA1, CASP-3, CTSZ, CSTB, KLK6, MMP-2, MMP-3, MMP-9, TIMP4, PAI, PCSK9, t-PA, TNF-R2, FAS, U-PAR, uPA
<b>Hypoxia</b>	CASP-3, MMP-2, MCP-1, MB, PDGF subunit A, t-PA, TR, FAS, uPA
<b>Response to peptide hormone</b>	COL1A1, IGFBP-1, TIMP4, MCP-1, PCSK9, RETN, RARRES2, FAS
<b>Wound healing</b>	CASP-3, COL1A1, IGFBP-1, KLK6, PRTN3, SELP, PAI, PDGF subunit A, TFPI, t-PA, AXL, U-PAR, uPA, vWF
<b>Other</b>	CPB1, PI3, GRN, IL-1RT2, IL-18BP, MEPE, NT-proBNP, DLK-1, SCGB3A2, TFF3, TNFSF13B

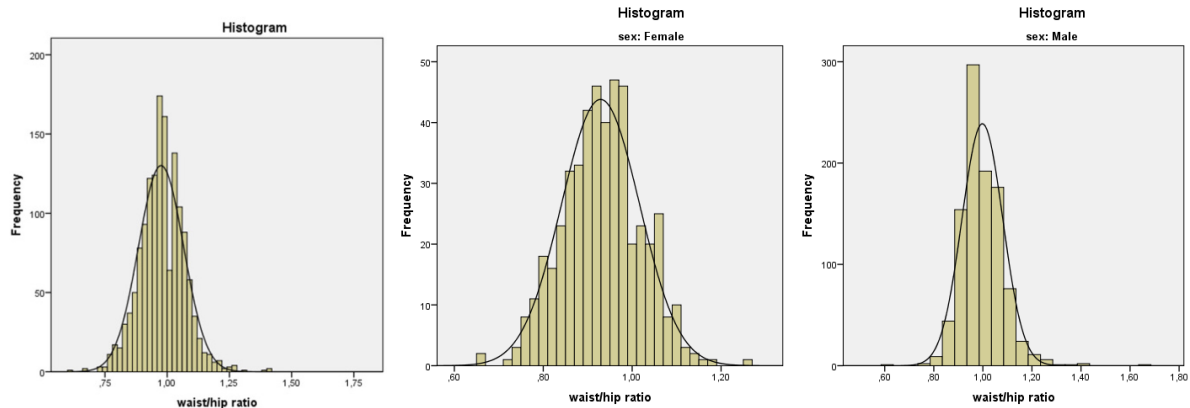
ALCAM = CD166 antigen; AP-N = Aminopeptidase N; AXL = Tyrosine-protein kinase receptor UFO; AZU1 = Azurocidin; BLM hydrolase = Bleomycin hydrolase; CASP-3 = Caspase-3; CCL15 = C-C motif chemokine 15; CCL16 = C-C motif chemokine 16; CCL22 = C-C motif chemokine 22; CCL24 = C-C motif chemokine 24; CD163 = Scavenger receptor cysteine-rich type 1 protein m130; CD93 = Complement component C1q receptor; CDH5 = Cadherin-5; CHI3L1 = Chitinase-3-like protein 1; CHIT1 = Chitinase-1; CNTN1 = Contactin-1; COL1A1 = Collagen alpha-1 (I) chain; CPA1 = Carboxypeptidase A1; CPB1 = Carboxypeptidase B; CSTB = Cystatin-B; CTSD = Cathepsin D; CTSZ = Cathepsin Z; CXCL16 = C-X-C motif chemokine 16; DLK-1 = Protein delta homolog 1; EGFR = Epidermal growth factor receptor; Ep-Cam = Epithelial cell adhesion molecule; EPHB4 = Ephrin type-B receptor 4; FABP4 = Fatty acid-binding protein, adipocyte; FAS = Tumor necrosis factor receptor superfamily member 6; Gal-3 = Galectin-3; Gal-4 = Galectin-4; GDF-15 = Growth/differentiation factor 15; GRN = Granulins; ICAM-2 = Intercellular adhesion molecule 2; IGFBP-1 = Insulin-like growth factor-binding protein 1; IGFBP-2 = Insulin-like growth factor-binding protein 2; IGFBP-7 = Insulin-like growth factor-binding protein 7; IL-17RA = Interleukin-17 receptor A; IL-18BP = Interleukin-18 binding protein; IL-1RT1 = Interleukin-1 receptor type 1; IL-1RT2 = Interleukin-1 receptor type 2; IL2-RA = Interleukin-2 receptor subunit Alpha; IL6-RA = Interleukin-6 receptor subunit Alpha; ITGB2 = Integrin beta-2; JAM-A = Junctional adhesion molecule A; KLK6 = Kallikrein-6; LDL receptor = Low-density lipoprotein receptor; LTBR = Lymphotoxin-beta receptor; MB = Myoglobin; MCP-1 = Monocyte chemoattractant protein 1; MEPE = Matrix extracellular phosphoglycoprotein; MMP-2 = Matrix metalloproteinase-2; MMP-3 = Matrix metalloproteinase-3; MMP-9 = Matrix metalloproteinase-9; MPO = Myeloperoxidase; NOTCH3 = Neurogenic locus notch homolog protein 3; NT-proBNP = N-terminal pro b-type natriuretic peptide; OPG = Osteoprotegerin (OPG); OPN = Osteopontin; PAI = Plasminogen activator inhibitor 1; PCSK9 = Proprotein convertase subtilisin/kexin type 9; PDGF subunit A = Platelet-derived growth factor subunit A; PECAM-1 = Platelet endothelial cell adhesion molecule; PGLYRP1 = Peptidoglycan recognition protein 1; PI3 = Elafin; PLC = Perlecan; PON3 = Paraoxanase; PRTN3 = Myeloblastin; PSP-D = Pulmonary surfactant-associated protein D; RARRES2 = Retinoic acid receptor responder protein 2; RETN = Resistin; SCGB3A2 = Secretoglobin family 3A member 2; SELE = E-selectin; SELP = P-selectin; SHPS-1 = Tyrosine-protein phosphatase non-receptor type substrate 1; SPON1 = Spondin-1; ST2 = ST2 protein; TFF3 = Trefoil factor 3; TFPI = Tissue factor pathway inhibitor; TIMP4 = Metalloproteinase inhibitor 4; TLT-2 = Trem-like transcript 2 protein; TNF-R1 = Tumor necrosis factor receptor 1; TNF-R2 = Tumor necrosis factor receptor 2; TNFRSF10C = Tumor necrosis factor receptor superfamily member 10C; TNFRSF14 = Tumor necrosis factor receptor superfamily member 14; TNFSF13B = Tumor necrosis factor ligand superfamily member 13B; t-PA = Tissue-type plasminogen activator; TR = Transferrin receptor protein 1; TR-AP = Tartrate-resistant acid phosphatase type 5; uPA = Urokinase-type plasminogen activator; U-PAR = Urokinase plasminogen activator surface receptor; vWF; von Willebrand factor

**Supplementary Table 2; Hazard ratio for tertiles of Waist-hip ratio in different HF subgroups and all-cause mortality**

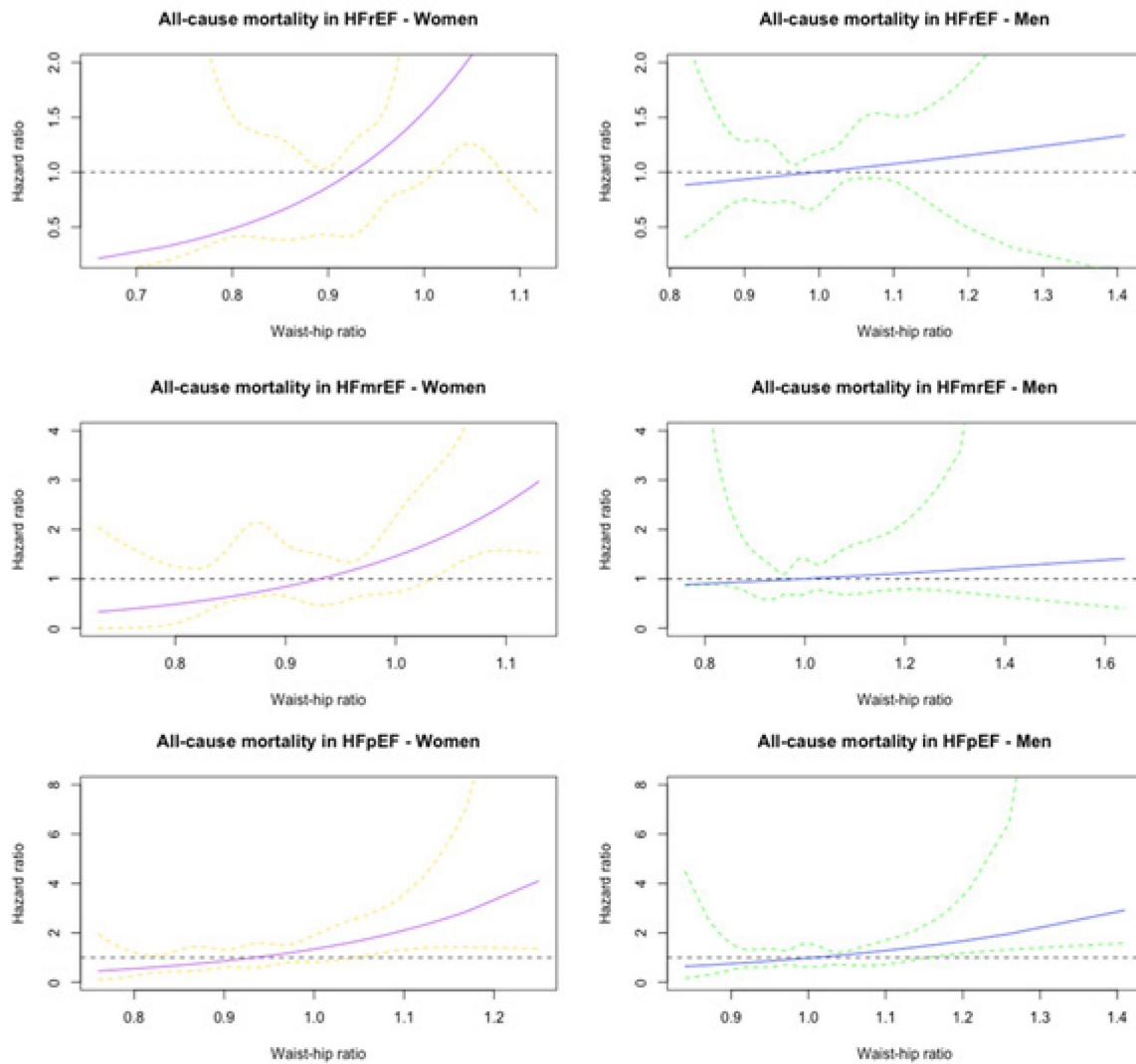
<b>All-cause mortality HFrefEF</b>	<b>Hazard ratio<sup>°</sup></b>	<b>P-value</b>	<b>Hazard ratio*</b>	<b>P-value</b>
<b>Waist-hip ratio 1<sup>st</sup> tertile</b>	Ref		Ref	
	1.27		0.92	
<b>Waist-hip ratio 2<sup>nd</sup> tertile</b>	[0.90-1.79]	0.181	[0.63-1.34]	0.654
	1.64		1.34	
<b>Waist-hip ratio 3<sup>rd</sup> tertile</b>	[1.19-2.26]	0.002	[0.95-1.89]	0.099
<b>All-cause mortality HFmrEF</b>	<b>Hazard ratio<sup>°</sup></b>	<b>P-value</b>	<b>Hazard ratio*</b>	<b>P-value</b>
<b>Waist-hip ratio 1<sup>st</sup> tertile</b>	Ref		Ref	
	0.89		0.93	
<b>Waist-hip ratio 2<sup>nd</sup> tertile</b>	[0.56-1.40]	0.613	[0.58-1.49]	0.753
	1.33		1.41	
<b>Waist-hip ratio 3<sup>rd</sup> tertile</b>	[0.85-2.06]	0.210	[0.87-2.26]	0.162
<b>All-cause mortality HFpEF</b>	<b>Hazard ratio<sup>°</sup></b>	<b>P-value</b>	<b>Hazard ratio*</b>	<b>P-value</b>
<b>Waist-hip ratio 1<sup>st</sup> tertile</b>	Ref		Ref	
	1.25		1.46	
<b>Waist-hip ratio 2<sup>nd</sup> tertile</b>	[0.81-1.94]	0.322	[0.91-2.34]	0.120
	1.47		2.08	
<b>Waist-hip ratio 3<sup>rd</sup> tertile</b>	[0.96-2.24]	0.076	[1.30-3.33]	0.002

<sup>°</sup> Univariable model

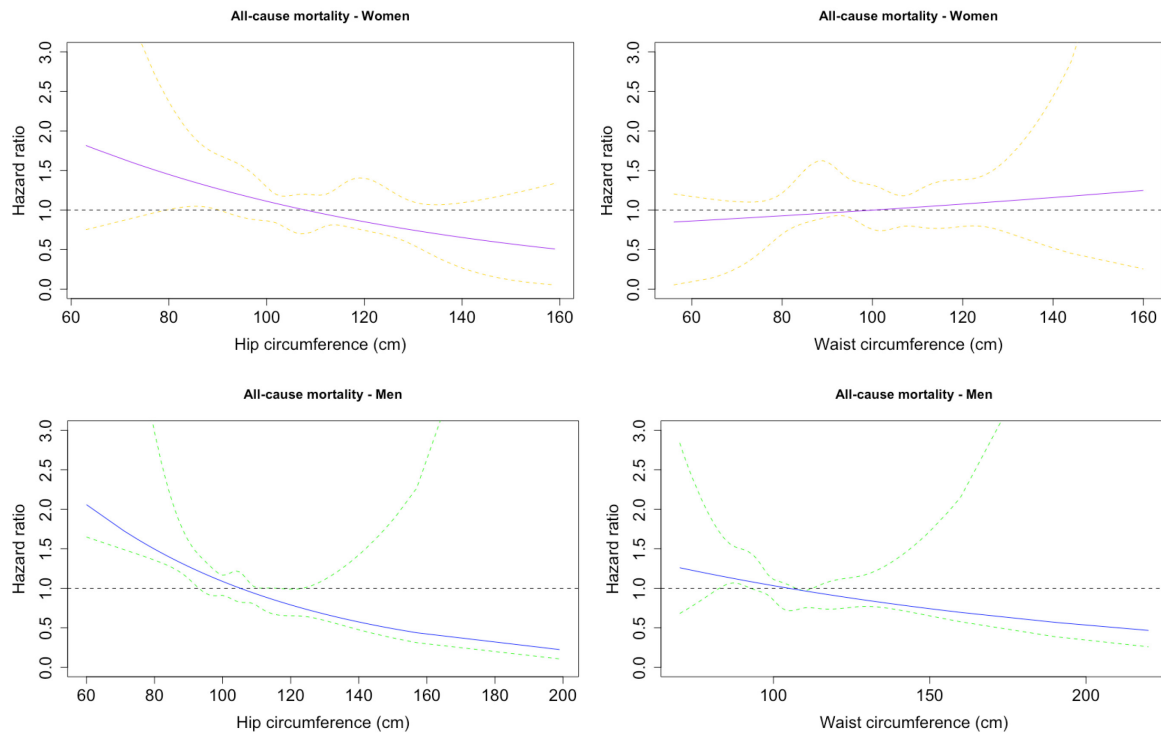
\* All are corrected for age, sex, Urea, NT-proBNP, hemoglobin, use of beta-blocker and statins



**Supplementary Figure 1; Histogram of distribution of WHR in the total population (left), in women (middle) and in men (right).**



**Supplementary Figure 2; Hazard ratio for Waist-hip ratio separated for women (left) and men (right) in HFREF , HFmrEF and HFpEF . Corrected for age, Urea, NT-proBNP, hemoglobin, use of beta-blocker and statins**



**Supplementary Figure 3; Hazard ratio for Waist and Hip circumference in women (top) and men (bottom).**